

CUSTOMER TERMINAL	RoHS	LEAD(Pb)-FREE
Sn96%, Ag4%	Yes	Yes

more than you expect



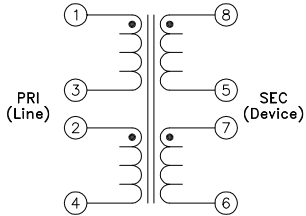
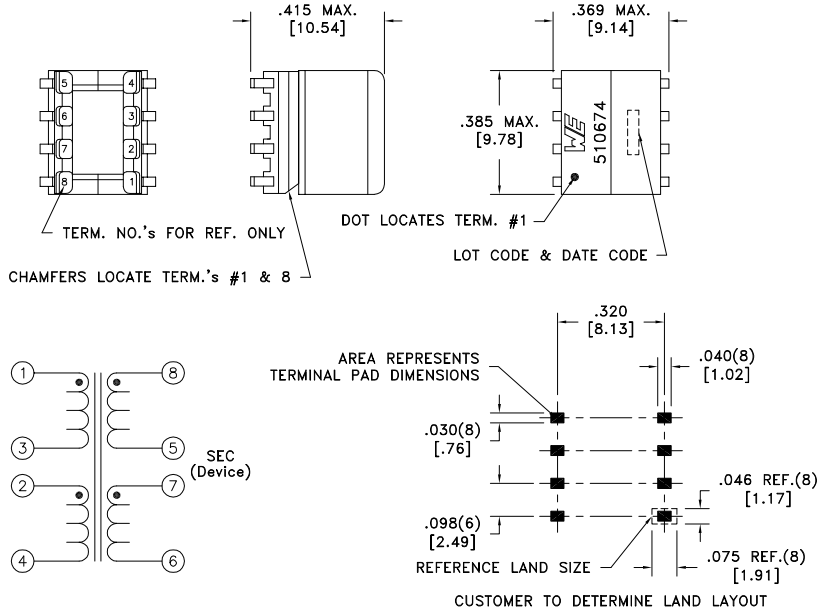
ELECTRICAL SPECIFICATIONS @ 25°C unless otherwise noted:

PARAMETER	TEST CONDITIONS	VALUE
D.C. RESISTANCE	1-4 tie(2+3), @20°C	1.00 ohms max.
D.C. RESISTANCE	8-6 tie(5+7), @20°C	1.00 ohms max.
INDUCTANCE	1-4 tie(2+3), 10kHz, 100mVAC, Ls	100uH ±6%
LEAKAGE INDUCTANCE	1-4 tie(2+3, 5+6+7+8), 1MHz, 100mVAC, Ls	1.5uH max.
INTERWINDING CAPACITANCE	1-8 tie(2+3, 5+7), 100kHz, 100mVAC, Cs	20pF max.
DIELECTRIC	1-8 tie(2+3, 5+7), 1875VAC, 1 second	1500VAC, 1 minute
TURNS RATIO	(1-4):(8-6), tie(2+3, 5+7)	1:1, ±1%
TOTAL HARMONIC DISTORTION	100kHz, 3Vrms across PRI, 100 ohm load, 100 ohm input, tie(2+3, 5+7)	-72dB max.
LONGITUDINAL BALANCE	100kHz - 17MHz	40dB min.

GENERAL SPECIFICATIONS:

OPERATING TEMPERATURE RANGE: -40°C to +85°C.

Designed to comply with the following requirements as defined by IEC60950-1, EN60950-1, UL60950-1/CSA60950-1 and AS/NZS60950.1:  
 - Supplementary insulation for a primary circuit at a working voltage of 265Vrms, 400Vpeak, Overvoltage Category II.



Wire insulation & RoHS status not affected by wire color.  
 Wire insulation color may vary depending on availability.

DETAILS SUBJECT TO CHANGE

REV.	DATE	Packaging Specifications Method: Tape & Reel PKG-0410 www.we-online.com/midcom		Tolerances unless otherwise specified: Angles: ±1° Fractions: ±1/64 Decimals: ±.005 [ .13] Footprint: ±.005 [ .13]	DRAWING TITLE <b>TRANSFORMER</b>	PART NO. <b>750510674</b>
6A	7/15	SEE REVISION SHEET FOR REVISION LEVEL	CONVENTION PLACEMENT	This drawing is dual dimensioned. Dimensions in brackets are in millimeters.	eiSos p/n: 750510674	SPECIFICATION SHEET 1 OF 1