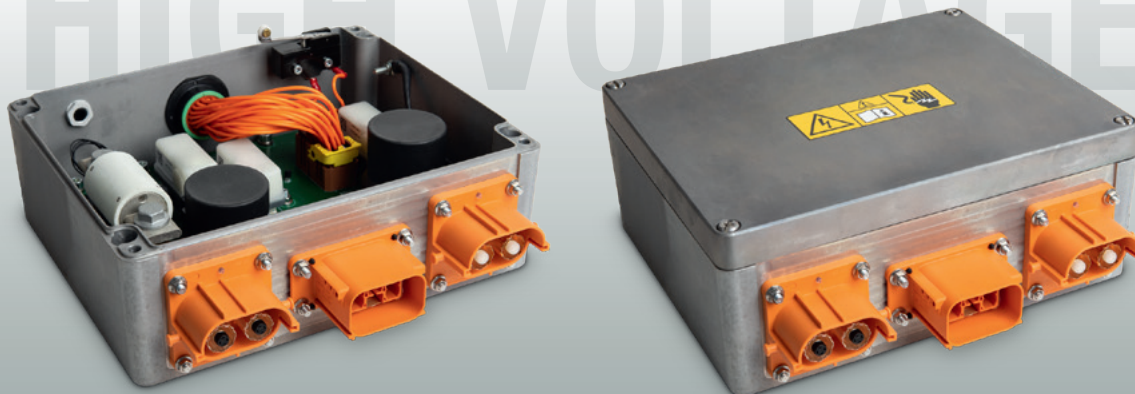


High Voltage Box

PDU 600



PDU 600

The PDU 600 is a standard solution for power distribution up to 600 volts and 200 amps continuous for electric and hybrid vehicles.

The HV Power Distribution Unit establishes the electrical connection between the battery, on-board charger, motor and other consumers such as heaters, DC-DC converters, etc. The combination of Powerelements, printed circuit board as well as thermally and mechanically stable press-fit connections enables optimum integration of HV / high current components. Temperature and current sensors are also integrated.

Technical Data

Mechanical data

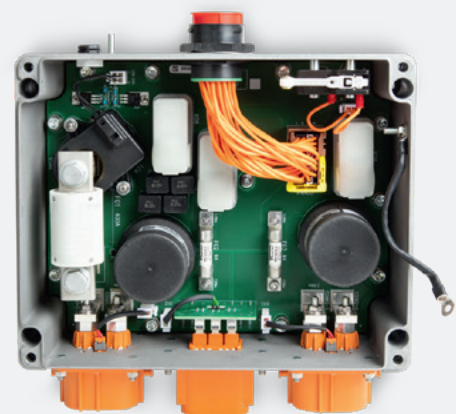
Operating temperature	-40 °C up to +60 °C
IP protection class	IP66
Weight	6.2 kg
Dimensions	280 mm x 290 mm x 110 mm

Electrical data

HV high power connector	TE HVP 800 up to 200 A
HV mid power connector	TE HVA 630 up to 40 A/pin
Signal connector	Deutsch HDP24-24-35PN
Specifics	<ul style="list-style-type: none"> ■ LEM current sensor ■ Temperature sensor
Components	<ul style="list-style-type: none"> ■ 1 x 400 A 600 VDC fuse ■ 2 x 30 A 600 VDC fuses ■ Gigavac contactors

Features and benefits

- EMC shielded aluminum housing
- Optimised heat management
- Secure connection with HV-Interlock connectors
- 100 % 'connectorised' system: Plug and Play solution
- PCB based solution without any HV cables used within the box
- Safety-relevant mechanisms (HVIL loop) such as a switch for detecting the lid opening
- Current measurement communicated via CAN bus



High Voltage



E-Mobility

Würth Elektronik ICS GmbH & Co. KG Intelligent Power & Control Systems

Gewerbepark Waldzimmern
Würthstraße 1
74676 Niedernhall
Tel. +49 7940 9810-0
Fax +49 7940 9810-1099
ics@we-online.com
www.we-online.com/ics