

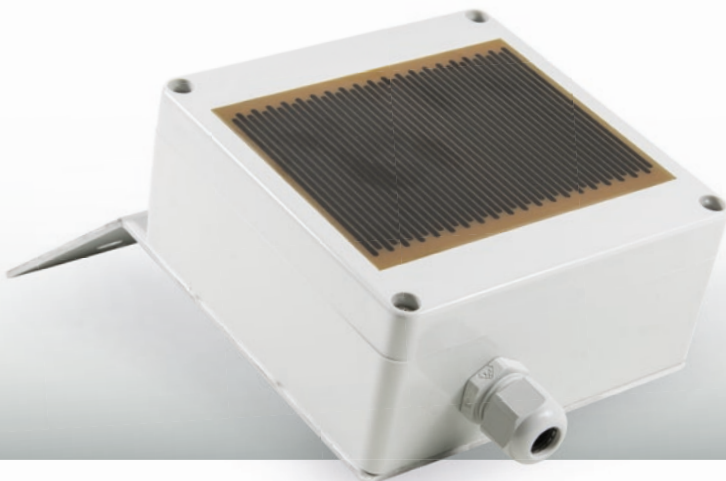
APPLICATION NOTE

Issue 35



Reliable and robust

Sensors based on conductive polymers



The combination of sensor surfaces and printed polymer technology heating elements creates a robust, reliable rain sensor.

This system replaces expensive gold-plated sensors with SMD-assembled heating elements. Cost-reduction by saving on gold and assembly costs isn't the only advantage of this solution.

Greater robustness against environmental influences and significantly improved surface heating performance is another great advantage.

In summary:

- Double-sided PCB with robust, printed sensor surfaces on the upper surface
- Printed polymer resistors as heating element on the bottom of the PCB
- Closed vias to prevent water or damp from entering

