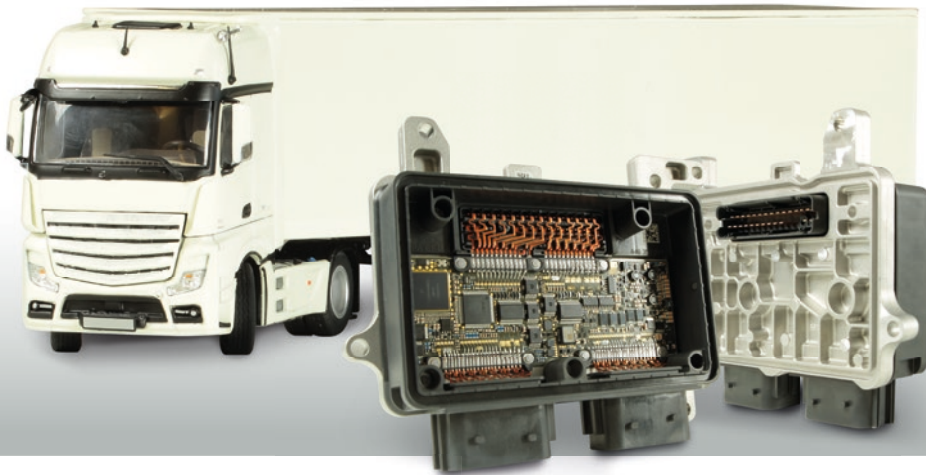
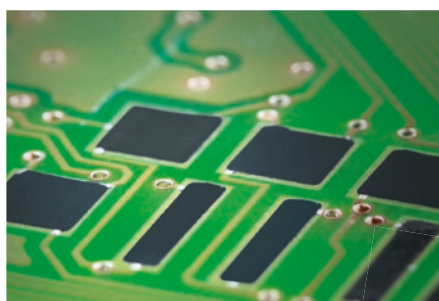
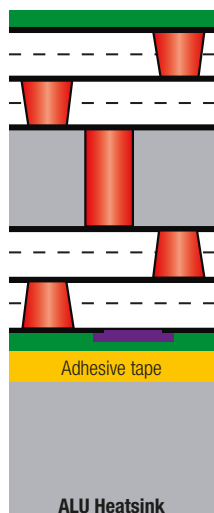


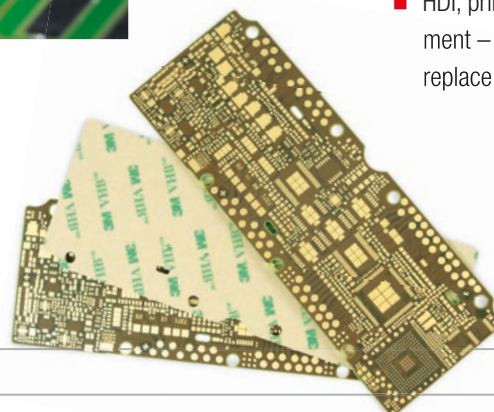
High-performance Printed circuit boards system



The printed circuit board system is used in the gearbox control of the commercial vehicle division. The use of HDI technology combined with printed resistors made it possible to achieve a significant reduction in the size of the printed circuit board.



Resistors on the outer layers



At a glance:

- HDI 06_2+2b+2 build up
- Embedded resistors 50Ω to $50K\Omega$, laser trimmed and voltage divider
- Customised heat sink for optimal thermal management, directly mounted on the gearbox
- Operating temperature up to 140°C , (peak to 150°C) with TG170° material
- Harsh environmental conditions (shock, vibration etc.)
- HDI, printed polymer and thermal management – these three key technologies replace the previous ceramic solution