

# 检测报告 Test Report



报告编号 A2180120347101002ER6

第 1 页共 12 页

Report No. A2180120347101002ER6

Page 1 of 12

申请单位 伍尔特电子(深圳)有限公司

Applicant WURTH ELECTRONICS(SHENZHEN)CO.,LTD.

地址 深圳市龙岗区黄阁北路天安数码城 1 号大厦 B 座 502 单元

Address B-502, BUI LDING 1, TIANAN CYBER PARK, THE NORTH HUANGGE ROAD,  
LONGGANG DISTRICT, SHENZHEN

以下测试之样品及样品信息由申请者提供并确认

**The following sample(s) and sample information was/were submitted and identified by/on the behalf of the client**

样品名称 Sample Name	RSTV series
型号 Type	471001264143
样品接收日期	2018.07.16
Sample Received Date	Jul. 16, 2018
样品检测日期	2018.07.16-2018.08.29
Testing Period	Jul. 16, 2018-Aug. 29, 2018

序号 No.	测试项目 Test Item
1	太阳辐射试验 Solar radiation test

**检测结果:** 请参见后续页面。

**Test Result(s):** Please refer to the following pages.

本报告于原报告(报告编号 A2180120347101002ER5)基础上修改了“备注”。本报告替换原报告 A2180120347101002ER5, 自本报告签发之日起, 原报告 A2180120347101002ER5 作废。

This testing report revised “Remark” based on the original report of A2180120347101002ER5. This testing report displaces the original one which was invalid since the date of this testing report released.

批准  
Approved by 赵跃磊

日期  
Date 2019.01.22  
Jan. 22, 2019

赵跃磊  
授权签字人  
Approved Signatory  
上海华测检测技术有限公司  
Centre Testing International  
Pibiao  
(Shanghai)  
检测专用章  
Inspection & Testing Services

No.R8638EB738

上海市浦东新区宁桥路 999 号  
No.999, Ningqiao Road, Pudong New Di  
strict, Shanghai.

# 检测报告

## Test Report

报告编号 A2180120347101002ER6

第 2 页共 12 页

Report No. A2180120347101002ER6

Page 2 of 12

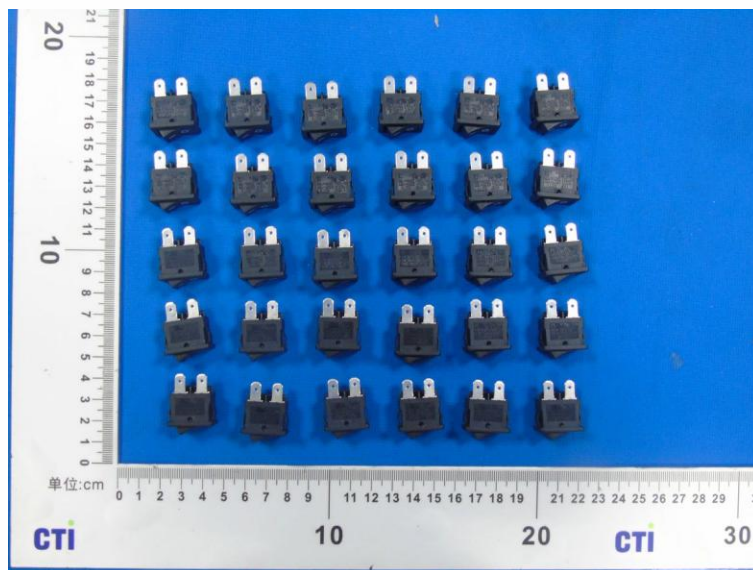
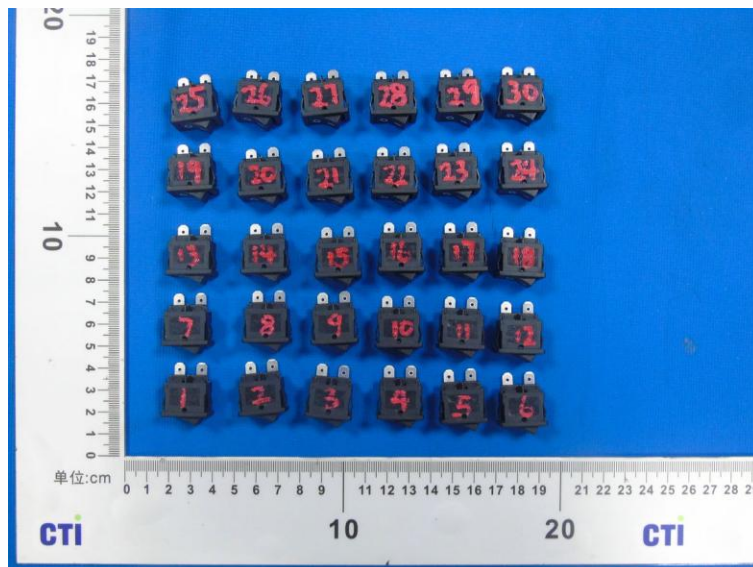
### 测试样品

#### Tested Sample(s)

样品编号 Sample No.	样品名称 Sample Name	样品型号 Type
A2180120347101002-1~30	RSTV series	471001264143

### 样品图片

#### Sample Photo(s)



A2180120347101002-1~30

# 检测报告

## Test Report

报告编号 A2180120347101002ER6

第 3 页共 12 页

Report No. A2180120347101002ER6

Page 3 of 12

测试项目：太阳辐射试验

Test Item: Solar radiation test

### 1. 测试设备 Test Equipment

设备名称 Equipment Name	型号 Model	品牌 brand	校准日期 Calibration date	有效期 Valid to
阳光模拟实验箱 Sunlight Simulation Chamber	SUN1000	伟思 Vötsch	2018.1.10	2019.1.9
绝缘电阻仪 Insulation Resistance Tester	TOS7200	菊水 Kikusui	2018.5.7	2019.5.6
耐压测试仪 Withstand Voltage Tester	TOS5301	菊水 Kikusui	2016.11.28	2018.11.27
毫欧表 Milliohm Tester	Agilent 4338B	安捷伦 Agilent	2018.5.7	2019.5.6

### 2. 实验室环境条件 Lab Environmental Conditions

温度：(18~28)℃； 湿度：(25~75)%RH

Temperature: (18~28)℃; Humidity: (25~75)%RH

### 3. 测试标准 Test Standard:

参考 IEC60068-2-5:2018 程序 Sa2;

Reference IEC60068-2-5:2018 Procedure Sa2;

### 4. 测试条件 Test Condition

-a) 辐射能量：1090 W/m<sup>2</sup>(设备总辐射量为：1120W/m<sup>2</sup>，根据最新标准要求把辐射量调整到：1090 W/m<sup>2</sup>);

Radiation Energy: 1090 W/m<sup>2</sup>(The total radiation is 1120W/m<sup>2</sup>, adjusted to 1090 W/m<sup>2</sup> according to the latest standards.)

-b) 温度：40℃;

Temperature: 40℃;

-c) 湿度：90% ± 10%RH;

Humidity: 90% ± 10%RH;

-d) 光照：20 小时;

Illumination: 20h;

-e) 黑暗：4 小时 温度：25℃;

Dark: 4h Temperature: 25℃;

-f) 循环数：25 循环;

Cycle number: 25 cycles;

# 检测报告 Test Report

报告编号 A2180120347101002ER6

第 4 页共 12 页

Report No. A2180120347101002ER6

Page 4 of 12

-g) 监控样品表面最高温度;

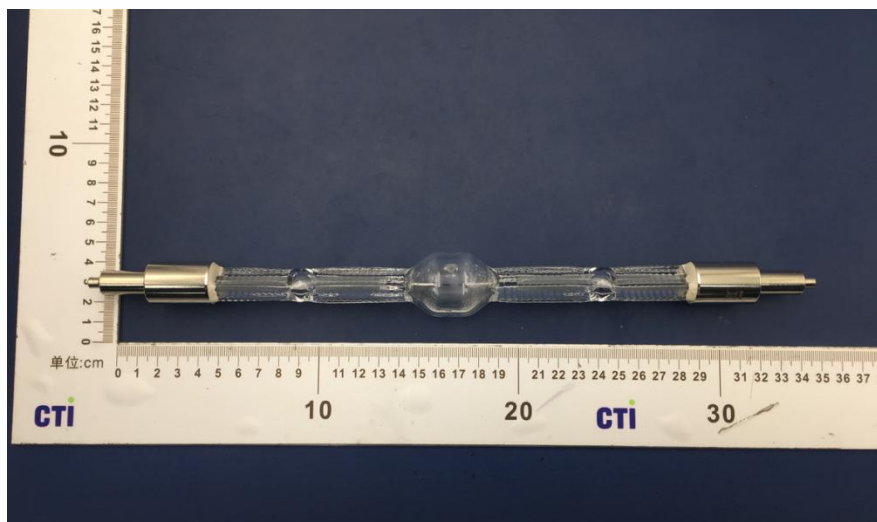
Monitoring the maximum temperature on the sample surface;

-h) 设备性能 Equipment performance

光谱范围 Spectral region	Ultra-violet B <sup>a</sup> 紫外线 B <sup>a</sup>	Ultra -violet A 紫外线 A	Visible 可见光	Infra-red 红外线	Total radiation 总辐射
带宽 Bandwidth	280nm-320nm	320nm~400nm	400nm-780nm	780nm-3000nm	280nm~3000nm
辐照度 Irradiance	5W/m <sup>2</sup>	63W/m <sup>2</sup>	560W/m <sup>2</sup>	492W/m <sup>2</sup>	1120W/m <sup>2</sup>
占总辐射比例 Proportion of total radiation	0.36%	6.64%	53%	40%	100%

-i) 灯泡: 卤素灯

Bulb: Halogen lamp



规格 Specification : OSRAM HMI 2500 W/DXS

# 检测报告

## Test Report

报告编号 A2180120347101002ER6

第 5 页共 12 页

Report No. A2180120347101002ER6

Page 5 of 12

### 5. 测试结果 Test Result(s)

样品编号 Sample No.	判定要求 Criterion	测试结果(目视检查) Test Result(s) (Visual inspection)
A2180120347101002-1~ A2180120347101002-30	1、目视检测样品外观不应有开裂, 变形和气泡现象。 No cracking, deformation, bubble phenomenon should be found on samples' surface(s) by visual inspection. 2、结构件不应松动。 No Loosening should be found on structural parts.	PASS

### 耐电压 Withstand voltage

样品编号 Sample No.	测试要求 Test Condition	判定要求 Criterion	测试前 Before test	测试后 After test
A2180120347101002-1~ A2180120347101002-30	pin-pin AC 1500V 60s	无击穿 No breakdown	Pass	Pass
	pin-case AC 3000V 60s	无击穿 No breakdown	Pass	Pass

### 绝缘电阻 Insulation Resistance

样品编号 Sample No.	绝缘电阻 Insulation Resistance 500V DC 60s pin-pin	
	判定要求 Criterion	测试结果 Test Result(s)
A2180120347101002-1~ A2180120347101002-30	绝缘电阻 > 100MΩ Insulation Resistance > 100MΩ	PASS

# 检测报告

## Test Report

报告编号 A2180120347101002ER6

第 6 页共 12 页

Report No. A2180120347101002ER6

Page 6 of 12

### 接触电阻 Contact Resistance

样品编号 Sample No.	判定要求 Criterion	测试结果 Test Result(s)
A2180120347101002-1~ A2180120347101002-30	接触电阻 < 20mΩ Contact Resistance < 20mΩ	PASS

测试项目 Test Item	测试方法 Test method	结果 Test Result(s)	结论 Conclusion
金属卤素灯测试 Solar Radiation Test	参考 IEC60068-2-5:2018 程序 Sa2; Reference IEC60068-2-5:2018 Procedure Sa2;	See Result	Pass

注 Note: 合格: 满足要求 Pass :Meet the requirements;

不合格: 不满足要求 Fail: Does not meet the requirements;

/: 不适用于判定 /: Not Apply to the judgment.

# 检测报告

## Test Report

报告编号 A2180120347101002ER6

第 7 页共 12 页

Report No. A2180120347101002ER6

Page 7 of 12

### 绝缘电阻 Insulation Resistance

样品编号 Sample No.	绝缘电阻 Insulation Resistance 500V DC 60s pin-pin		
	判定要 Criterion	测试前 Before the test	测试后 After the test
A2180120347101002-1	绝缘电阻 > 100MΩ Insulation Resistance > 100MΩ	> 100MΩ	> 100MΩ
A2180120347101002-2		> 100MΩ	> 100MΩ
A2180120347101002-3		> 100MΩ	> 100MΩ
A2180120347101002-4		> 100MΩ	> 100MΩ
A2180120347101002-5		> 100MΩ	> 100MΩ
A2180120347101002-6		> 100MΩ	> 100MΩ
A2180120347101002-7		> 100MΩ	> 100MΩ
A2180120347101002-8		> 100MΩ	> 100MΩ
A2180120347101002-9		> 100MΩ	> 100MΩ
A2180120347101002-10		> 100MΩ	> 100MΩ
A2180120347101002-11		> 100MΩ	> 100MΩ
A2180120347101002-12		> 100MΩ	> 100MΩ
A2180120347101002-13		> 100MΩ	> 100MΩ
A2180120347101002-14		> 100MΩ	> 100MΩ
A2180120347101002-15		> 100MΩ	> 100MΩ
A2180120347101002-16		> 100MΩ	> 100MΩ
A2180120347101002-17		> 100MΩ	> 100MΩ
A2180120347101002-18		> 100MΩ	> 100MΩ
A2180120347101002-19		> 100MΩ	> 100MΩ
A2180120347101002-20		> 100MΩ	> 100MΩ
A2180120347101002-21		> 100MΩ	> 100MΩ
A2180120347101002-22		> 100MΩ	> 100MΩ
A2180120347101002-23		> 100MΩ	> 100MΩ
A2180120347101002-24		> 100MΩ	> 100MΩ
A2180120347101002-25		> 100MΩ	> 100MΩ
A2180120347101002-26		> 100MΩ	> 100MΩ
A2180120347101002-27		> 100MΩ	> 100MΩ
A2180120347101002-28		> 100MΩ	> 100MΩ
A2180120347101002-29		> 100MΩ	> 100MΩ
A2180120347101002-30		> 100MΩ	> 100MΩ

# 检测报告

## Test Report

报告编号 A2180120347101002ER6

第 8 页共 12 页

Report No. A2180120347101002ER6

Page 8 of 12

### 接触电阻 Contact Resistance

样品编号 Sample No.	判定要求 Criterion	测试前 Before the test	测试后 After the test
A2180120347101002-1	接触电阻 < 20mΩ Contact Resistance < 20mΩ	2.7mΩ	3.3mΩ
A2180120347101002-2		3.5mΩ	3.2 mΩ
A2180120347101002-3		3.5mΩ	3.2mΩ
A2180120347101002-4		2.3mΩ	3.2mΩ
A2180120347101002-5		2.8mΩ	3.5mΩ
A2180120347101002-6		3.4mΩ	3.1mΩ
A2180120347101002-7		3.6mΩ	4.6mΩ
A2180120347101002-8		3.1mΩ	3.3mΩ
A2180120347101002-9		2.8mΩ	3.2mΩ
A2180120347101002-10		3.8mΩ	3.5mΩ
A2180120347101002-11		3.1mΩ	3.3mΩ
A2180120347101002-12		3.1mΩ	3.2mΩ
A2180120347101002-13		3.9mΩ	3.3mΩ
A2180120347101002-14		2.7mΩ	3.3mΩ
A2180120347101002-15		4.3mΩ	2.7mΩ
A2180120347101002-16		4.2mΩ	3.2mΩ
A2180120347101002-17		2.3mΩ	3.2mΩ
A2180120347101002-18		3.1mΩ	3.2mΩ
A2180120347101002-19		2.6mΩ	3.4mΩ
A2180120347101002-20		3.1mΩ	3.4mΩ
A2180120347101002-21		2.9mΩ	3.1mΩ
A2180120347101002-22		2.6mΩ	3.2mΩ
A2180120347101002-23		3.1mΩ	3.2mΩ
A2180120347101002-24		3.1mΩ	3.2mΩ
A2180120347101002-25		3.4mΩ	3.3mΩ
A2180120347101002-26		3.1mΩ	5.6mΩ
A2180120347101002-27		2.9mΩ	3.4mΩ
A2180120347101002-28		2.9mΩ	3.4mΩ
A2180120347101002-29		3.1mΩ	3.3mΩ
A2180120347101002-30		2.6mΩ	3.2mΩ



# 检测报告 Test Report

报告编号 A2180120347101002ER6

第 9 页共 12 页

Report No. A2180120347101002ER6

Page 9 of 12

测试图片

**Test Photo(s)**



测试图片

**Test Photo(s)**

# 检测报告 Test Report

报告编号 A2180120347101002ER6

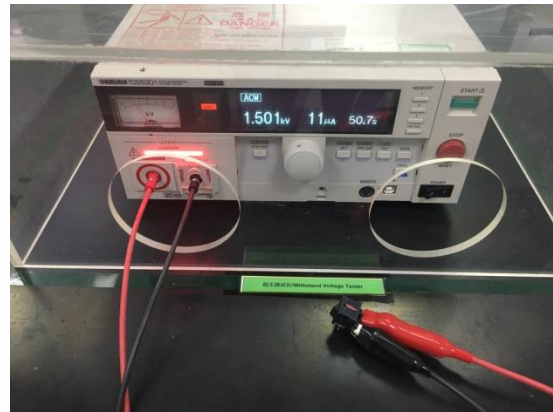
第 10 页共 12 页

Report No. A2180120347101002ER6

Page 10 of 12



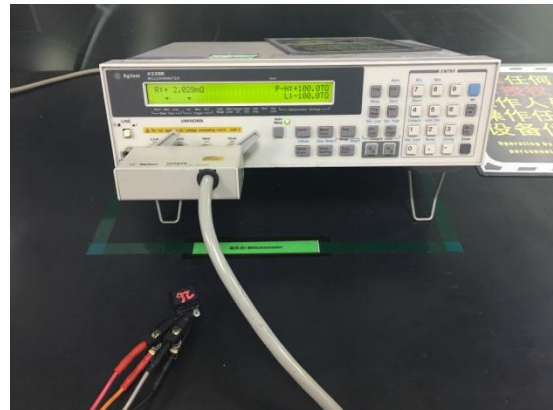
绝缘电阻 Insulation Resistance



耐电压 Withstand voltage (pin-pin)



耐电压 Withstand voltage (pin-case)



接触电阻 contact resistance

# 检测报告

## Test Report

报告编号 A2180120347101002ER6

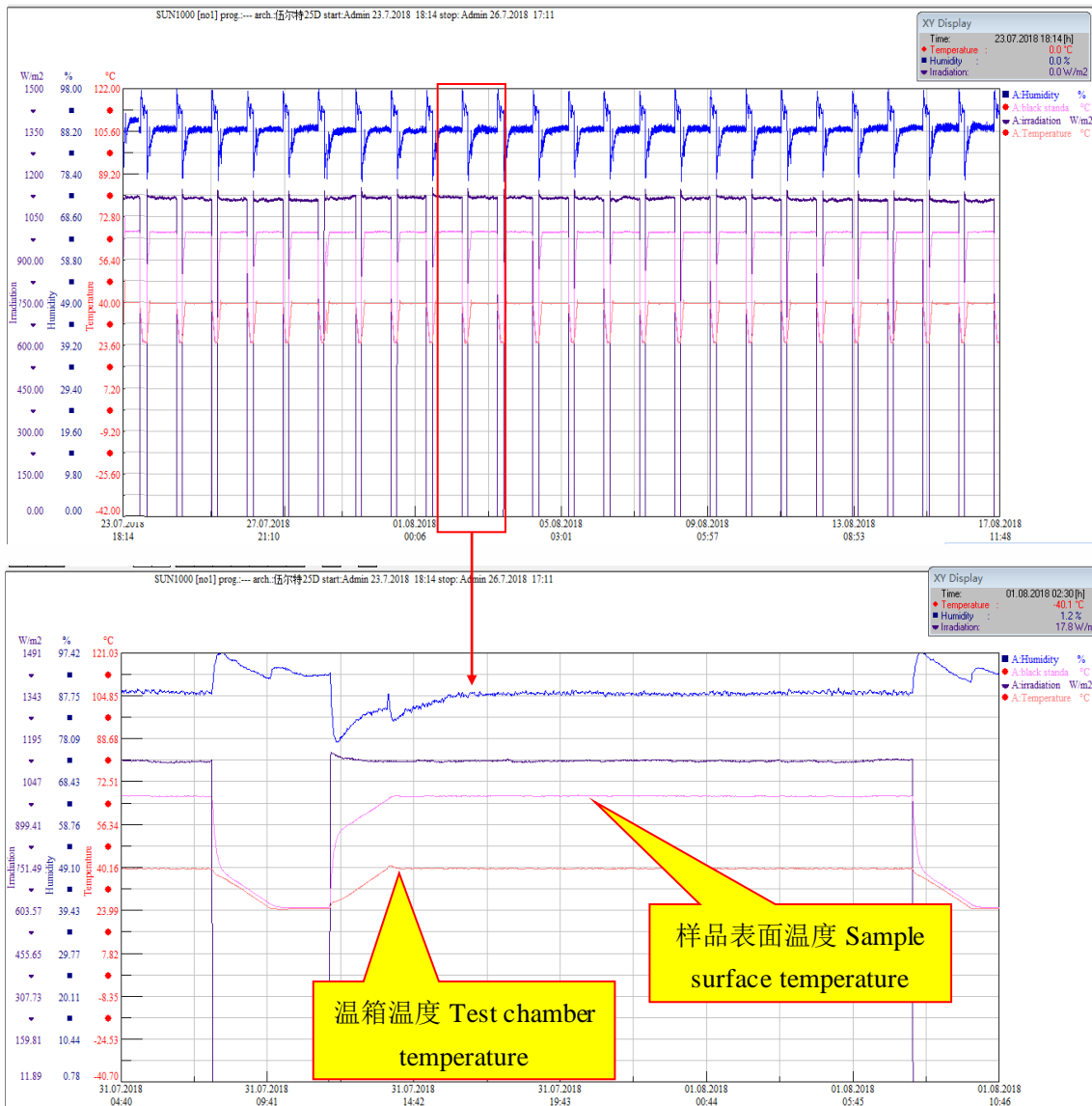
第 11 页共 12 页

Report No. A2180120347101002ER6

Page 11 of 12

### 测试曲线

#### Test Curve



测试曲线

Test Curve

# 检测报告 Test Report

报告编号 A2180120347101002ER6

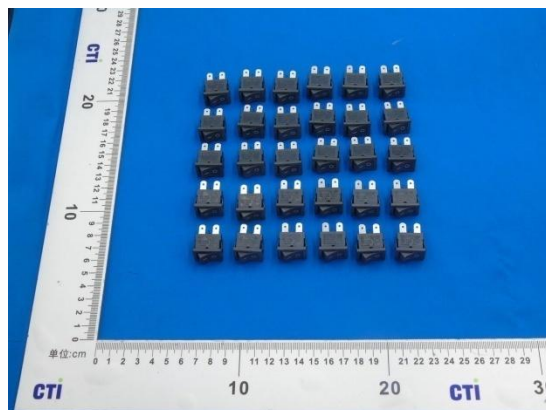
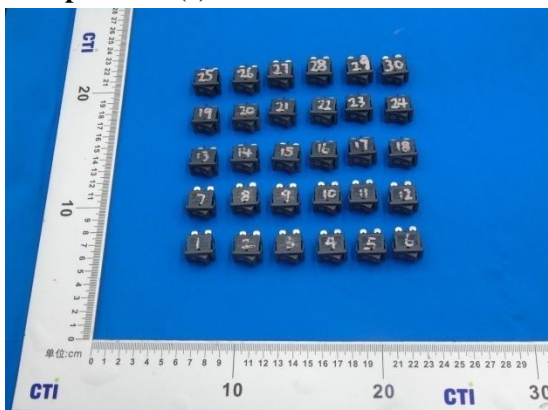
第 12 页共 12 页

Report No. A2180120347101002ER6

Page 12 of 12

测试后的样品图片

Sample Photo(s) after the test



A2180120347101002-1~30

备注：本报告中的数据结果供科研、教学、企业内部质量控制、企业产品研发等目的用。

Remark: The testing data and result(s) in this report is(are) just for scientific research, education, internal quality control and product development etc.

\*\*\* 报告结束 \*\*\*

\*\*\* End of Report \*\*\*

声明：

Statement:

1. 检测报告无批准人签字、“专用章”及报告骑缝章无效；

This report is considered invalidated without approval signature, special seal and the seal on the perforation;

2. 样品及样品信息由申请者提供，申请者应对其真实性负责，CTI 未核实其真实性；

The sample(s) and sample information was/were provided by the client who should be responsible for the authenticity which CTI hasn't verified;

3. 本报告检测结果仅对送测样品负责；

The result(s) shown in this report refer(s) only to the sample(s) tested;

4. 未经 CTI 书面同意，不得部分复制本报告。

Without written approval of CTI, this report can't be reproduced except in full;

5. 如检测报告中的英文内容与中文内容有差异，以中文为准。

In case of any discrepancy between the English version and Chinese version of the testing reports(if generated), the Chinese version shall prevail.