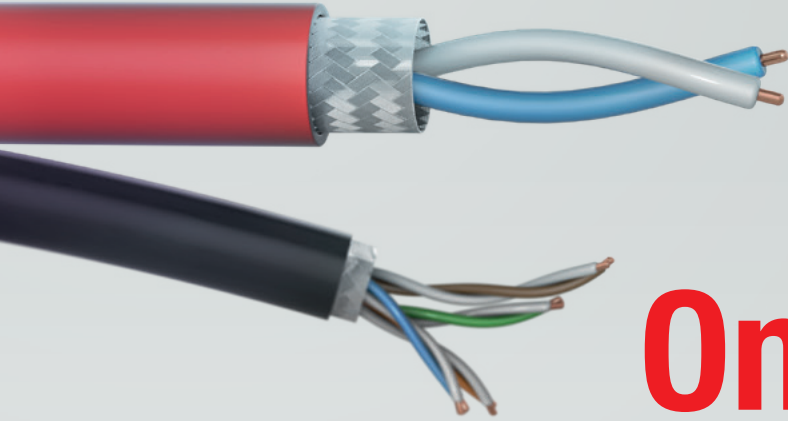


Single Pair Ethernet



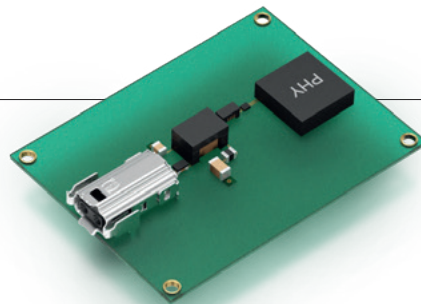
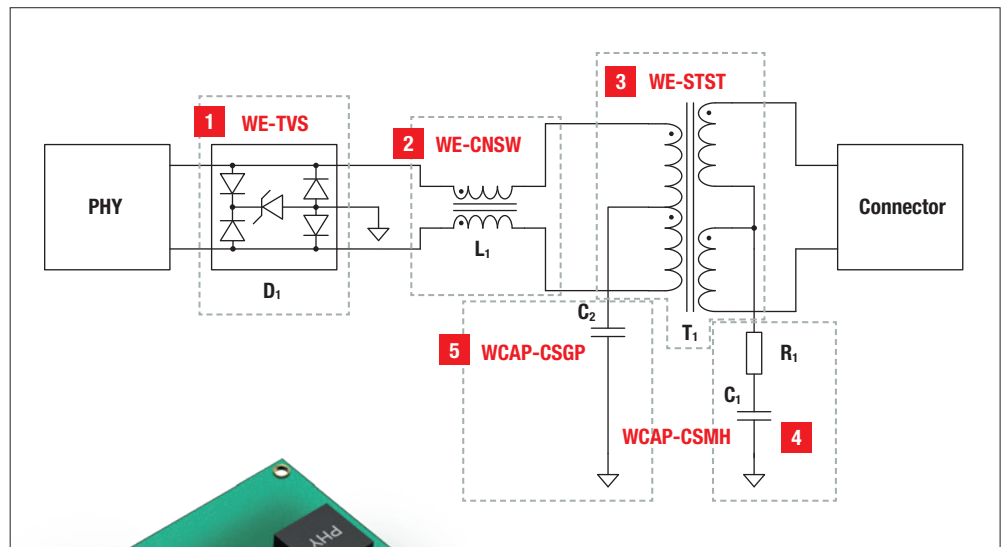
One Pair is all you need.

Würth Elektronik is the first manufacturer offering a fully industrial compliant Single Pair Ethernet solution on the PCB.

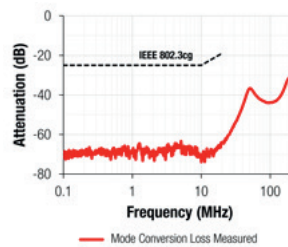
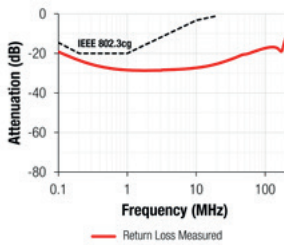
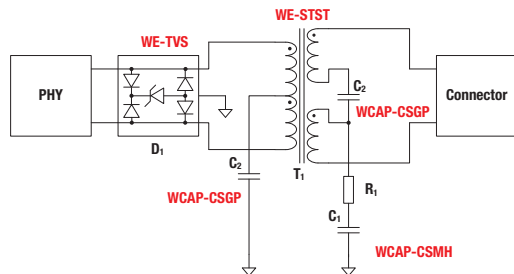
Industrial Design Recommendation

- 1 ESD protection up to 15 kV (IEC 61000-4-2)
- 2 Noise attenuation
- 3 Isolation 1.5 kV (IEC 62368-1)
– Noise attenuation
- 4 EMC isolation
- 5 EMC isolation

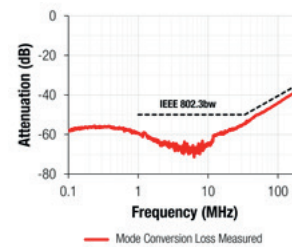
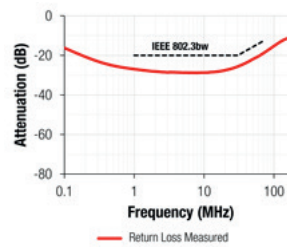
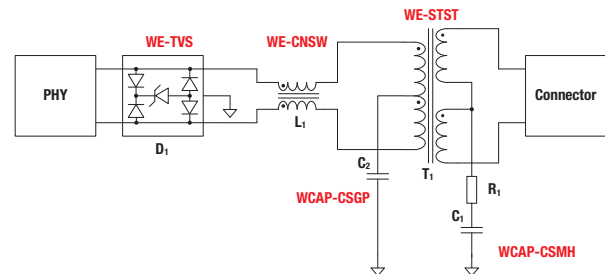
The whole interface solution is compliant with IEEE 802.3cg/bw



10BASE-T1



100BASE-T1



Signal Transformer

T1 WE-STST

L x W x H: 4.7 x 3.22 x 2.9 mm
 Order Code: 74930000
 Data Rate: 10/100 BASE-T1
 L: 350 μ H
 V_T : 1500 V_{RMS}

Ceramic Capacitor

C1 WCAP-CSMH

Size: 1206
 Order Code: 885342208024
 V_{DC} : 2000 V
 C: 1 nF

C2 WCAP-CSGP

Size: 0402
 Order Code: 885012205086
 V_{DC} : 50 V
 C: 100 nF

TVS Diode

D1 WE-TVS

Size: DFN 1210-6L
 Order Code: 824012823
 ESD Protection up to 8/15 kV
 (contact/air)
 V_{DC} : 3.3 V
 C_{Ch} : 0.18 pF

Common Mode Line Filter

L1 WE-CNSW

Size: 1206
 Order Code: 744232222
 $Z @ 100$ MHz: 2200 Ω
 I_R : 200 mA

More information:
www.we-online.com/spe

