

CUSTOMER TERMINAL	RoHS	LEAD(Pb)-FREE
Sn100%	Yes	Yes

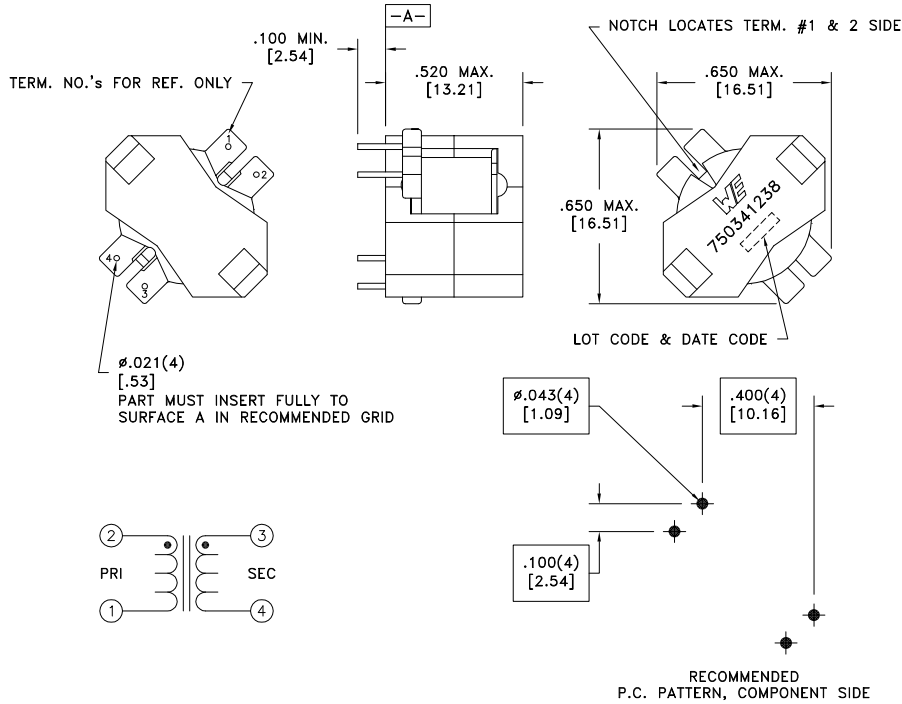
more than you expect



Midcom

ELECTRICAL SPECIFICATIONS @ 25°C unless otherwise noted:

PARAMETER	TEST CONDITIONS	VALUE
D.C. RESISTANCE	2-1 @20°C	0.78 ohms max.
D.C. RESISTANCE	4-3 @20°C	0.75 ohms max.
INDUCTANCE	2-1 50kHz, 100mVAC, Ls	2.2mH ±5%
LEAKAGE INDUCTANCE	2-1 tie(3+4), 50kHz, 100mVAC, Ls	20uH max.
DIELECTRIC	2-3 625VAC, 1 second	500VAC, 1 minute
TURNS RATIO	(2-1):(3-4)	3:1, ±1%



Wire insulation & RoHS status not affected by wire color.
Wire insulation color may vary depending on availability.

REV.	DATE	Packaging Specifications Method: Tray PKG-0155 www.we-online.com/midcom		Tolerances unless otherwise specified: Angles: ±1° Fractions: ±1/64 Decimals: ±.005 [.13] Footprint: ±.001 [.03]	DRAWING TITLE TRANSFORMER	PART NO. 750341238
6A	4/12	SEE REVISION SHEET FOR REVISION LEVEL		This drawing is dual dimensioned. Dimensions in brackets are in millimeters.	eiSos p/n: 750341238	SPECIFICATION SHEET 1 OF 1