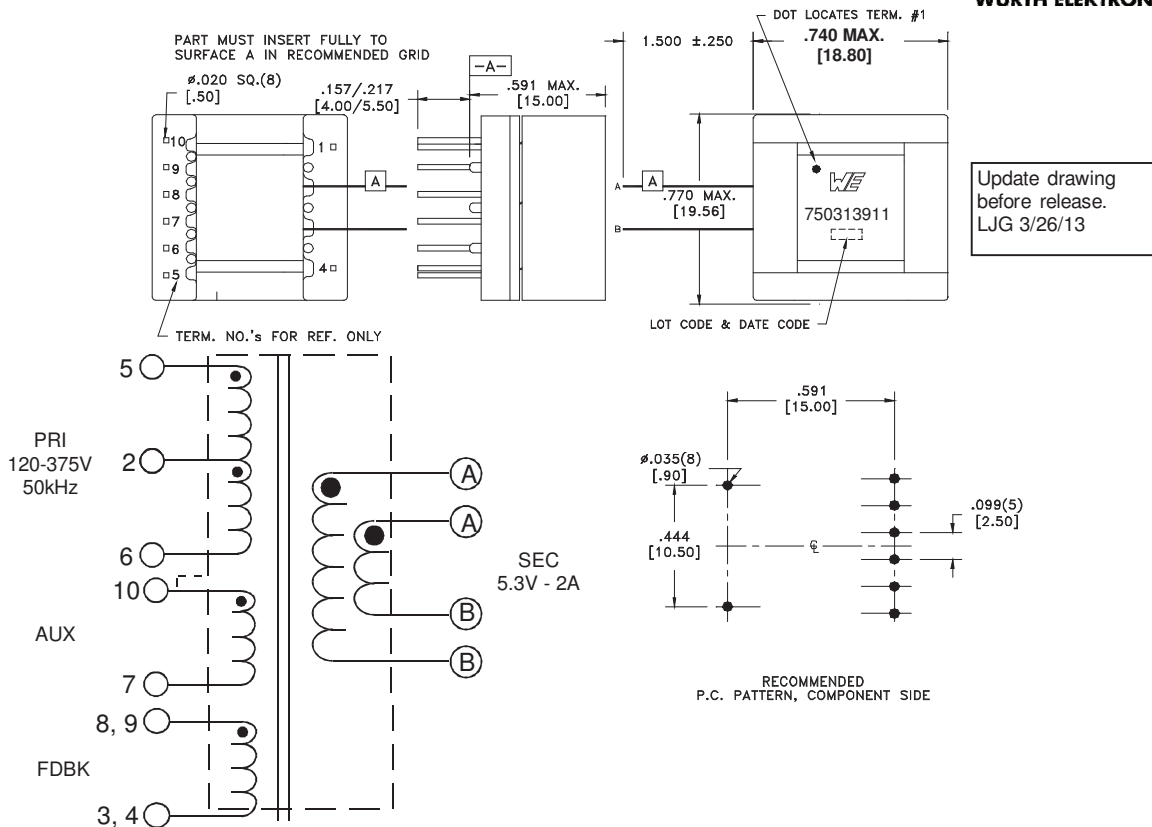


CUSTOMER TERMINAL	RoHS	LEAD(Pb)-FREE
Sn96%, Ag4%	Yes	Yes



**ELECTRICAL SPECIFICATIONS @ 25°C unless otherwise noted:**

- D.C. RESISTANCE (@20°C):
- 5-6 , 3.47 Ohms ±10%.
  - 3-9 (tie 3+4, 8+9), 0.045 Ohms ±20%.
  - 7-10 , 0.810 Ohms ±10%.
  - A-B , 0.017 Ohms ±20%.
- DIELECTRIC RATING:
- 3000VAC, 1 minute tested by applying 3750VAC for 1 second between pins 2-A(tie 6+7+8).
  - 500VAC, 1 minute tested by applying 625VAC for 1 second between pins 6-7.
  - 500VAC, 1 minute tested by applying 625VAC for 1 second between pins 2-3.
- INDUCTANCE:
- 880µH ±10%, 10kHz, 100mVAC, 0mADC, 5-6, Ls.
- SATURATION CURRENT:
- 920mA saturating current that causes 20% rolloff from initial inductance.
- LEAKAGE INDUCTANCE:
- 18µH typ, 35µH max, 100kHz, 100mVAC, 5-6(tie 3+4+7+8+9+10, A+B), Ls.
- URNS RATIO:
- ( 5-2 ):( 2-6 ) , ( 1 ):(1.00) , ±1%.
  - ( 5-6 ):( 10-7 ) , ( 5.26 ):(1.00) , ±1%.
  - ( 5-6 ):( 9-3 ) , ( 12.5 ):(1.00) , (tie 3+4, 8+9) , ±1%.
  - ( 5-6 ):( A-B ) , ( 14.28 ):(1.00) , ±1%.

Reference Design

Safety Standard Undefined

OPERATING TEMPERATURE RANGE: -40°C to 125°C including temp. rise.

Wire insulation & RoHS status not affected by wire color. Wire insulation color may vary depending on availability.

<b>Würth Electronics Midcom Inc.</b>  Watertown, SD USA Toll Free: 800-643-2661 Fax: 605-886-4486	Unless otherwise specified, tolerances are as follows: Angles: ±1°      Fractions: ±1/64 Decimals: ±.005(.127mm)      Footprint: ±.001(.03mm)	<b>more than you expect</b>	
	Drawing Title <b>Transformer</b>	Drawing Number <b>750313911</b>	Rev. <b>02</b>
This drawing is dual dimensioned. Dimensions in brackets are in millimeters	Revisions: See Sheet 1	Scale ----	Spec Sheet 1 of 1