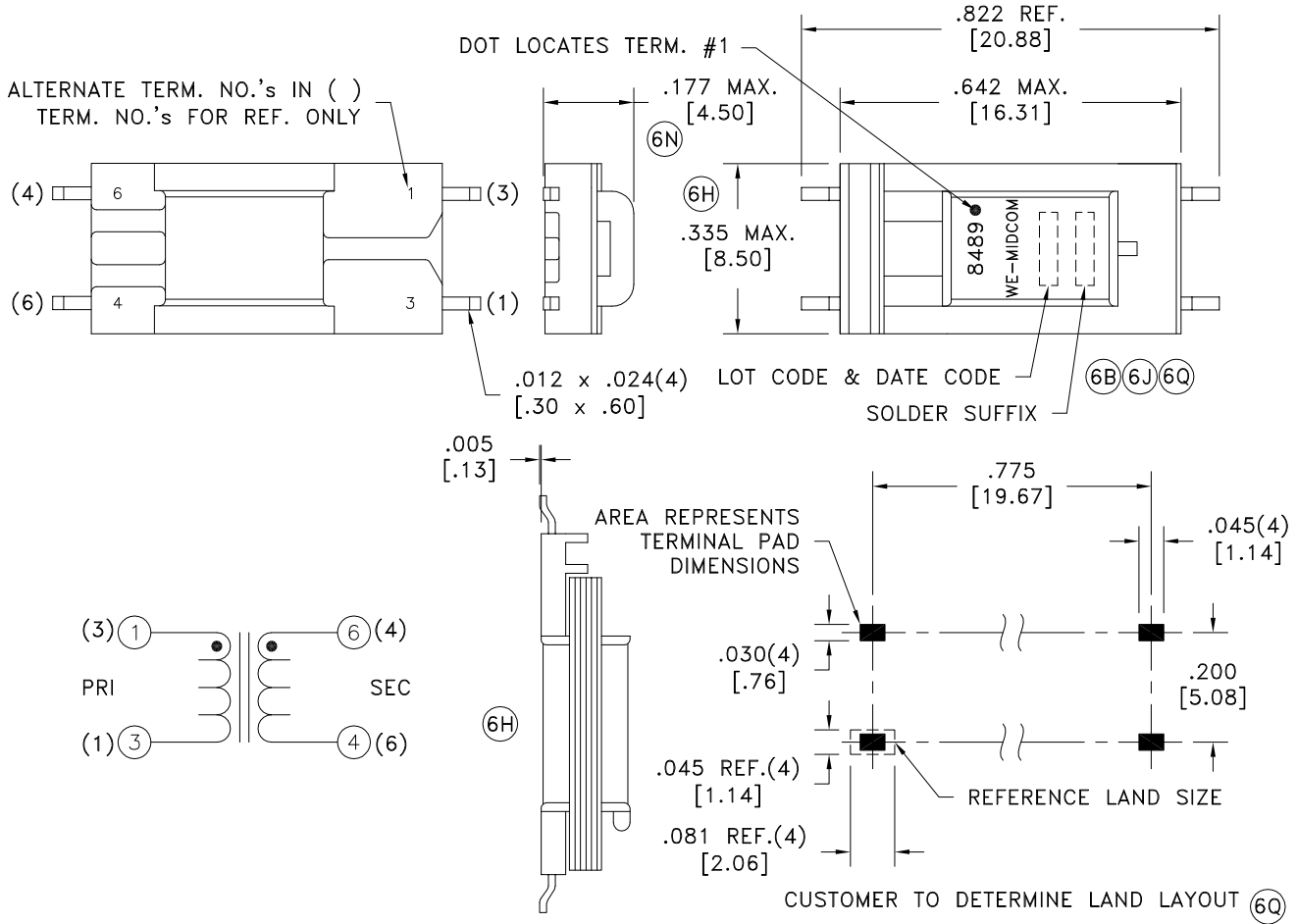


SOLDER SUFFIX	CUSTOMER TERMINAL	RoHS	LEAD(Pb)-FREE	6Q(6R)
LF1	Sn96%, Ag4%	Yes	Yes	



ELECTRICAL SPECIFICATIONS @ 25°C unless otherwise noted:

DESIGNED TO REFLECT: 600 ohms on PRI with 287 ohm load on SEC.

- 6C D.C. RESISTANCE, (@20°C): PRI, 155 ohms ±10%.
SEC, 145 ohms ±10%.
- * FREQUENCY RESPONSE: ±0.25dB, 200 - 4000Hz.
- * INSERTION LOSS: 3.85dB max., 200 - 4000Hz, at 1000Hz.
- 6H DIELECTRIC RATING: 1500VAC, 1 minute tested by applying 1650VAC for 1 second between PRI-SEC.
- INDUCTANCE: 1.5H min., 1kHz, 1.0VAC, 1-3, Lp.
- * RETURN LOSS: 14dB min., 200 - 4000Hz.
- 6H TURNS RATIO: (PRI):(SEC) = 1:1, ±1%.
- 6S TOTAL HARMONIC DISTORTION: -78dB max., 600Hz, -10dBm, (V.90).
- 6R OPERATING TEMPERATURE RANGE: -40°C to +85°C.
- 6Q CAUTION: To maintain the integrity of the safety-isolation barrier, this transformer must be hand soldered to the PCB after the board has been exposed to the Pb-free solder-reflow process. The maximum allowable body temperature of this model is 230°C and should not be exposed to this temperature for more than 20 seconds.
- * See AD-671-8489 for typical values for International Network information.
- 6H PATENT PENDING U.S. and FOREIGN.

6N(6Q)6S

AGENCY NUMBER	
6M UL60950-1	E205930
6M CSA60950-1 (Via CUL)	E205930
6F IEC60950-1 (Via CB cert.)	US/9300/UL
6E JAPAN (Via CB cert.)	US/9300/UL
6G ACA/AUSTEL (Via CB cert.)	US/9300/UL

Unless otherwise specified:
Tolerances:
Angles: ±1°
Fractions: ±1/64
Decimals: ±.005[.13]

This drawing is dual dimensioned.
Dimensions in brackets are in millimeters.

DRAWING TITLE
TRANSFORMER

eiSos p/n: 7500718489

SEE REVISION SHEET FOR REVISION LEVEL

Midcom WE
www.we-online.com/midcom

PART NO. 6R(6Q)6M(6C) REV. 6S 9/17

671-8489R-LF1

SPECIFICATION SHEET 1 OF 1

PART#
671-8489R-LF1