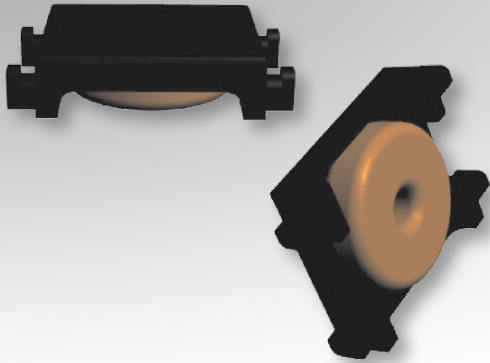


# Toroid Headers

## TOR-4P-HT2

4-Terminal, SMT



### Characteristics:

This SMT toroidal header was developed with plastic terminals. It is designed with a low profile and compact footprint for functional insulation cases.

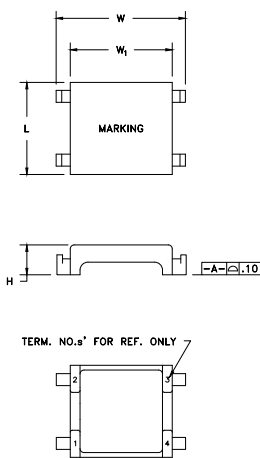
### Applications:

- CMC
- Gate drive
- Inductor
- Signal isolation
- Telecom

### Technical Data:

Order Code	Type of Insulation	A <sub>e</sub> (mm <sup>2</sup> )	L <sub>c</sub> (mm)	V <sub>e</sub> (mm <sup>3</sup> )	Ø OD max. (mm)	Cavity Depth (mm)	L (mm)	W (mm)	H (mm)	W <sub>1</sub> (mm)
250-1299	Functional	1	9.71	9.66	5.26	1.37	5.87 max.	8.26 max.	2 max.	6.5 ref.

### Dimensions:



### Footprint (mm):

