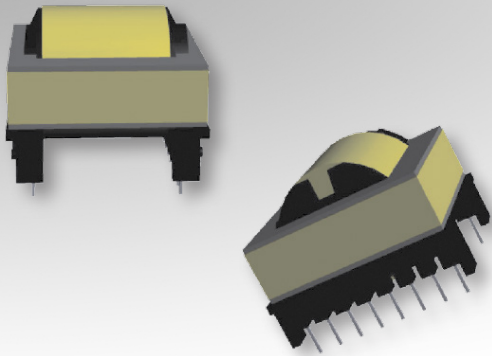


# Bobbin Packages

## ETD39

16-Terminal, THT, Horizontal



### Characteristics:

This TH ETD39 package was developed for functional or special safety cases and low cost requirements. It features many terminals for multiple outputs, split coils, or parallel high current winds.

### Applications:

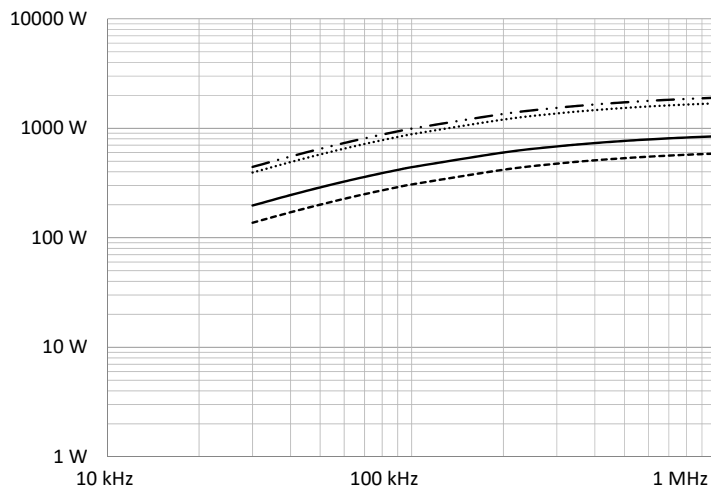
- Offline
- DC/DC converter
- Industrial controls
- Lighting
- White goods
- Telecom
- Charging
- Stand-by power
- PFC

### Technical Data:

Order Code	Type of Insulation	Winding Width (mm)	Winding Build (mm)	Winding Perimeter (mm)	$A_c$ (mm <sup>2</sup> )	$L_e$ (mm)	$V_e$ (mm <sup>3</sup> )	Core Order Code (Power)
070-5724	Functional/Reinforced	26.3	6.8	47.75	124.7	92.2	11497	150-2669

Order Code	L (mm)	W (mm)	H (mm)	G (mm)
070-5724	49 max.	41.9 max.	31.75 max.	3.8 min.

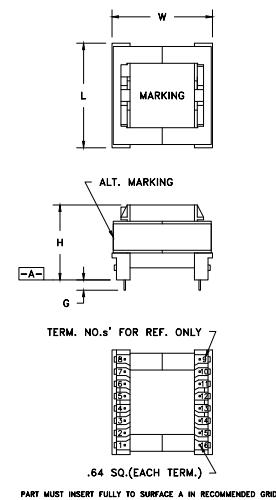
### Estimated Maximum Power Level:



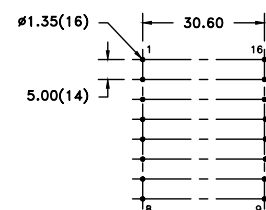
- Half-Bridge / Forward
- DC-DC Flyback
- ..... Push-Pull
- Offline Flyback

All curves are DC-DC unless otherwise noted. For offline applications, the power level must be derated as shown in the flyback curves.

### Dimensions:



### Footprint (mm):



RECOMMENDED P.C. PATTERN, COMPONENT SIDE  
TOLERANCE: ±.03