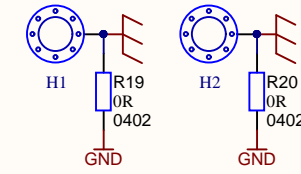
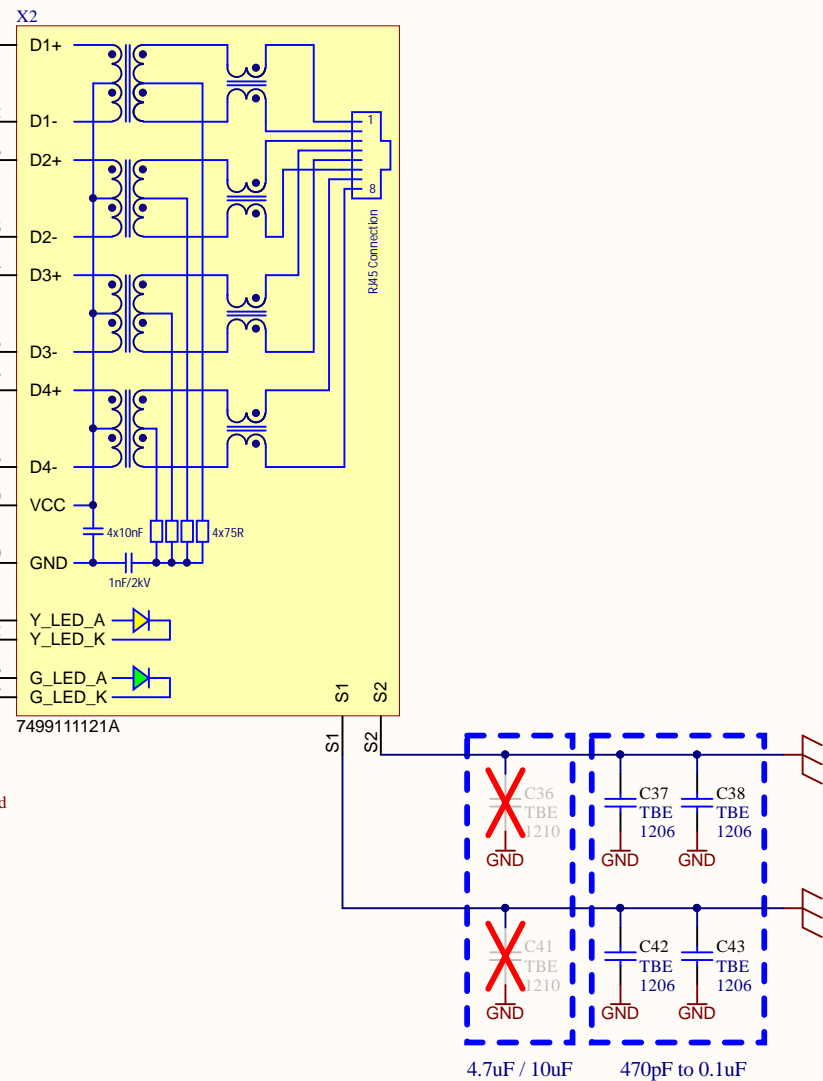
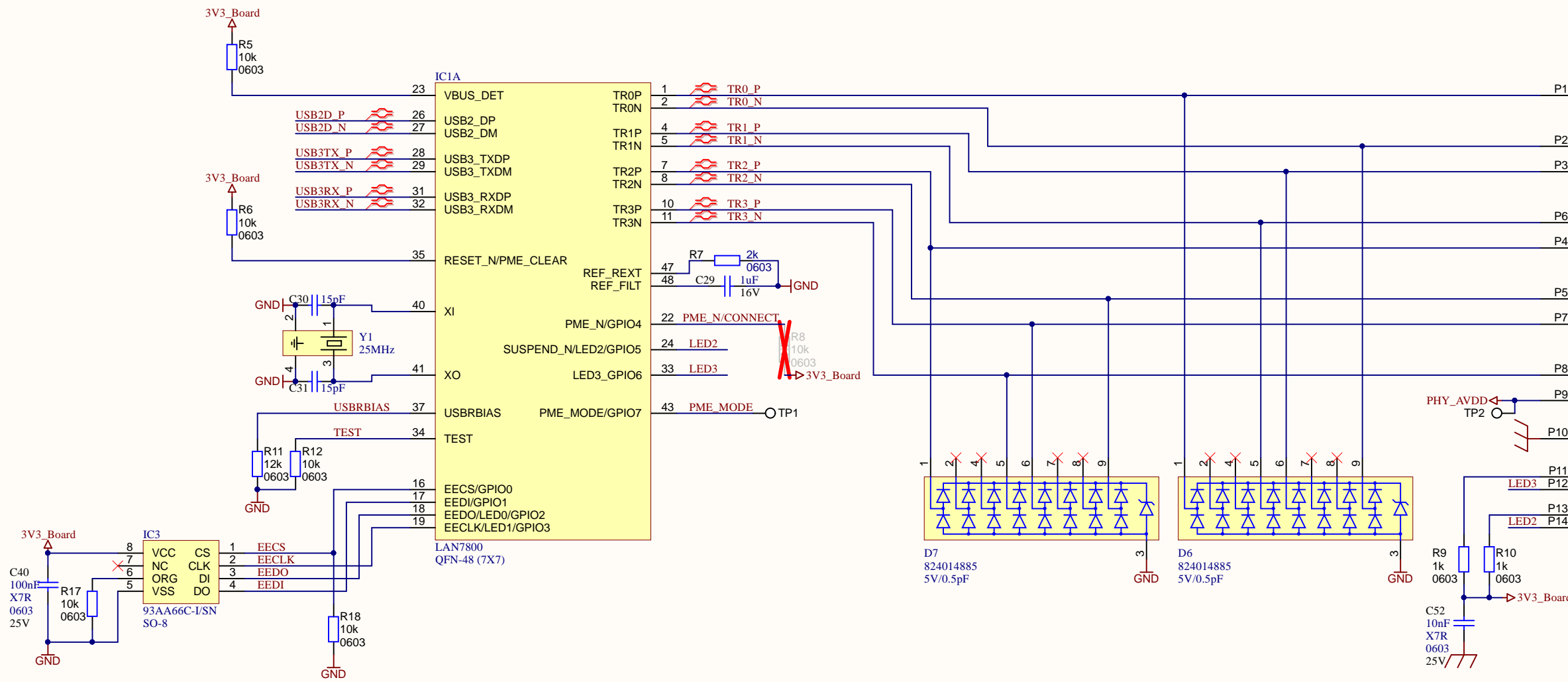
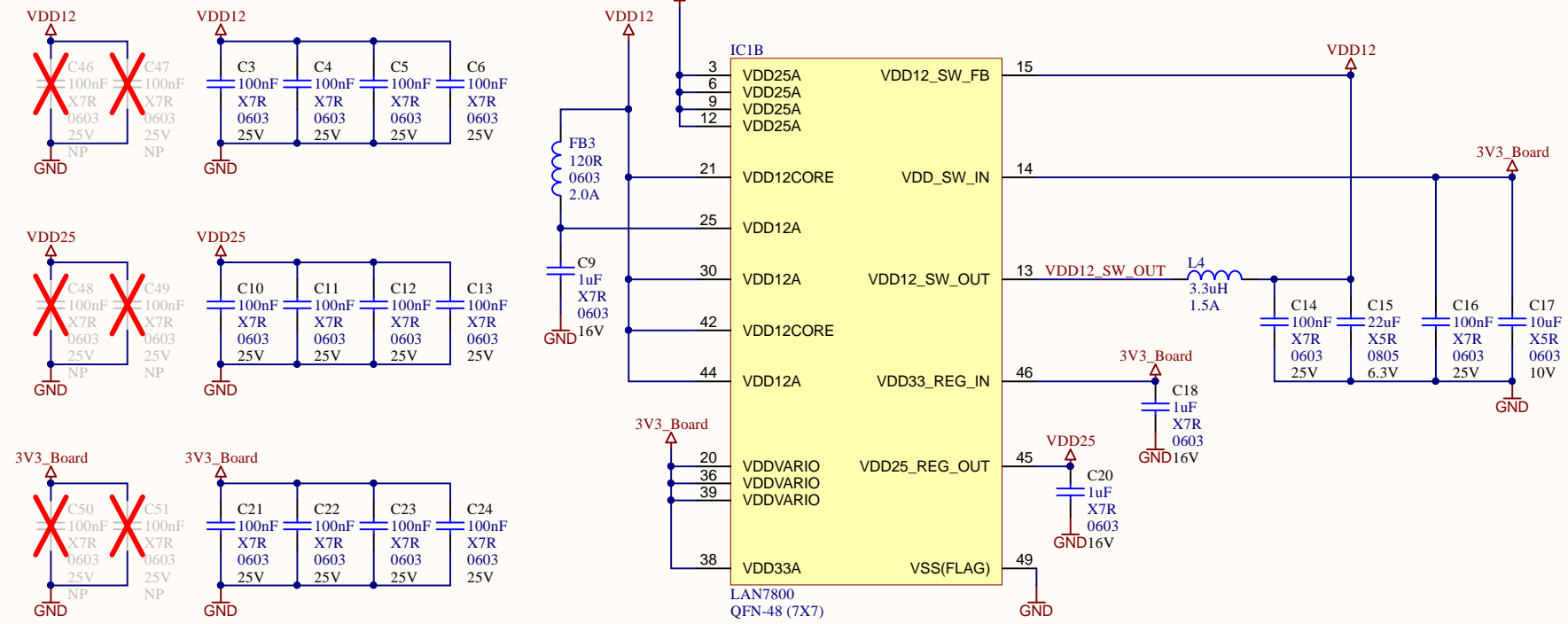
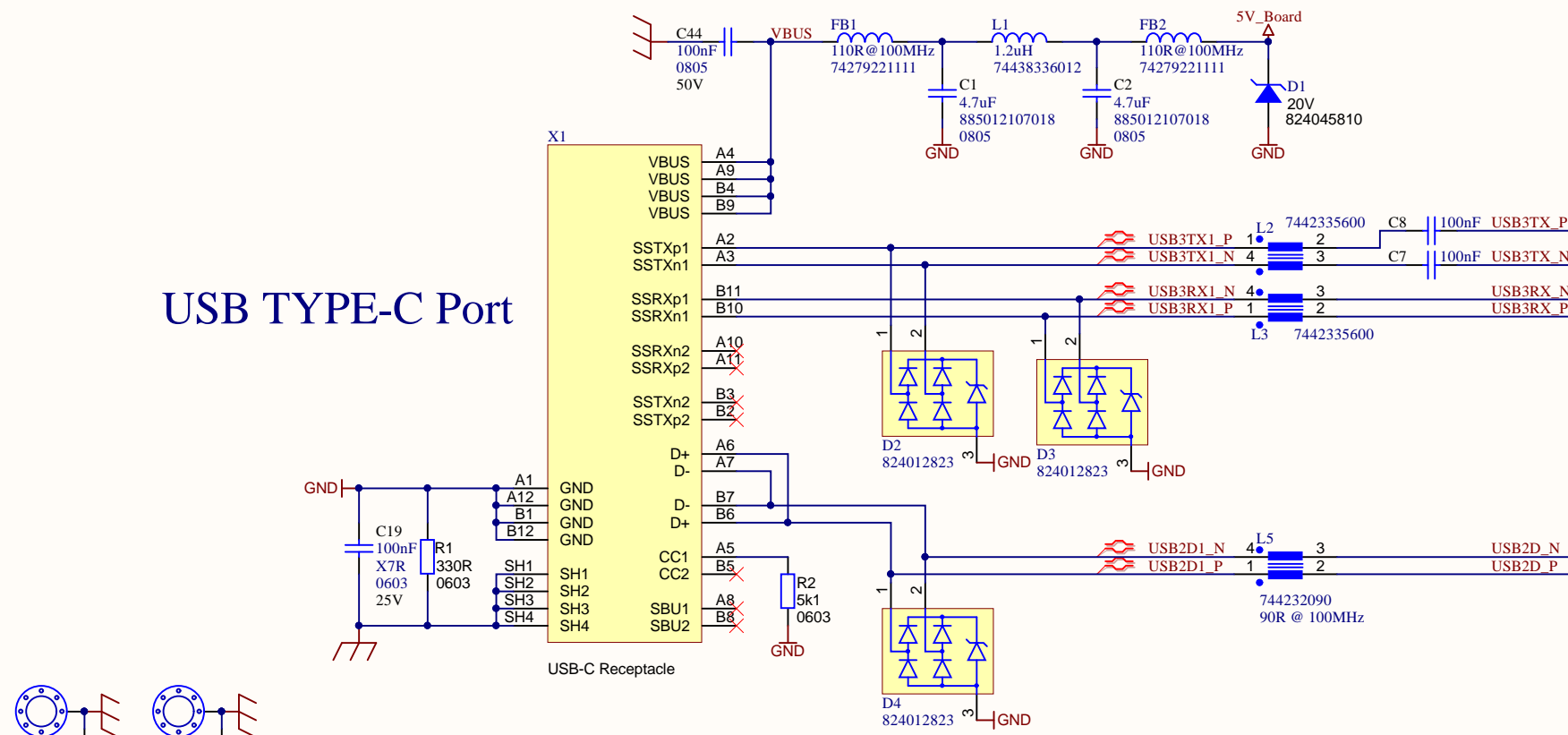


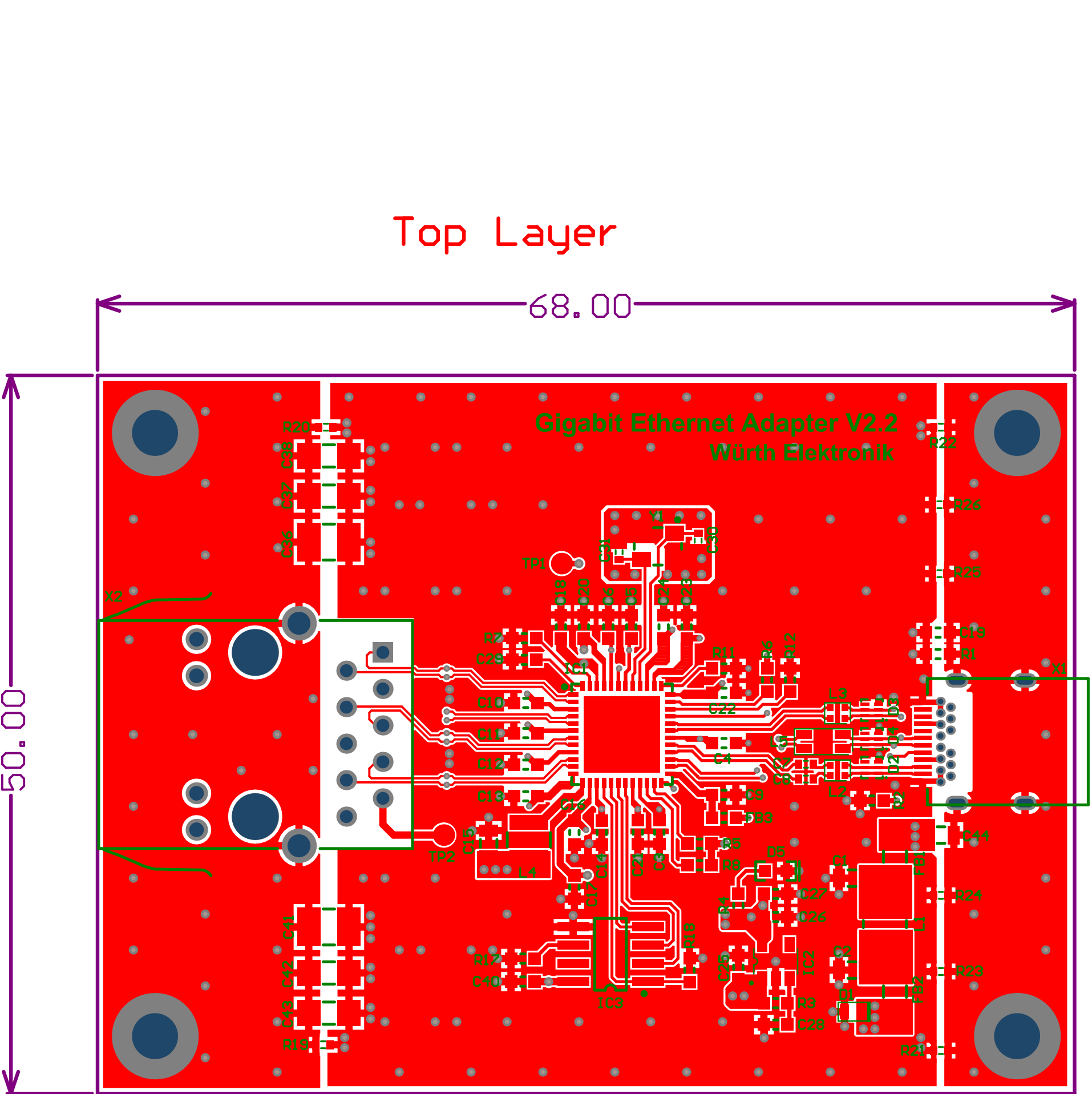
USB TYPE-C Port



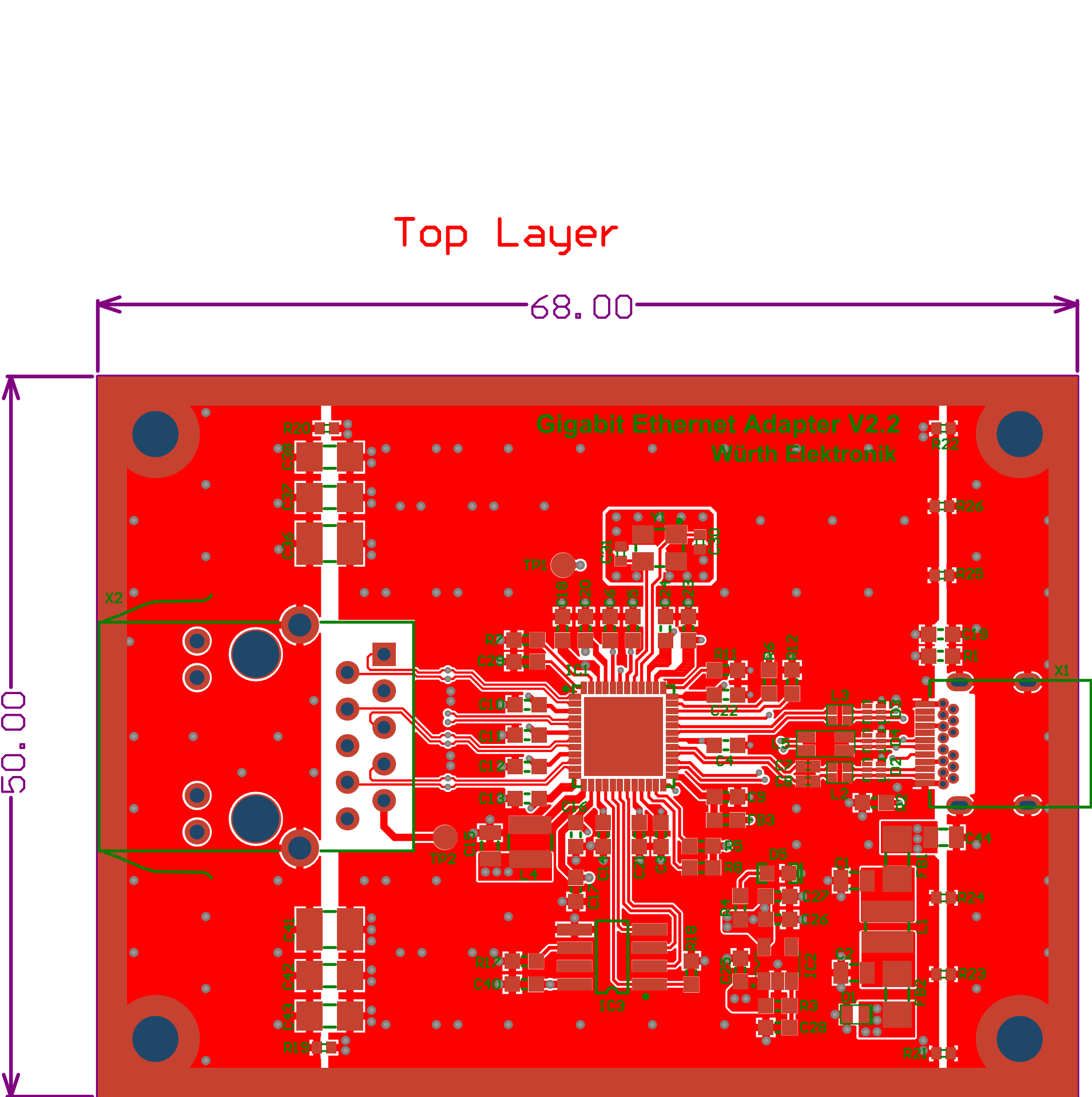
Rev.	Content	Date	Name
1.0	Original Document	04-05-2020	Nattawut
1.1	Correct EEPROM data line	19-11-2021	Nattawut
1.2	Remove Net SSRX2, SSTX2	04-10-2022	Nattawut

GB-Ethernet interface adapter		Customer:	
Main page			
Size	Document Number	Modified By:	Rev
A3	01-MCU.SchDoc	Nattawut	1.2
Print Date : 04-Oct-22		Design Date : Mon 4th May, 2020	Sheet: 1 of 1

WÜRTH Elektronik eiSos

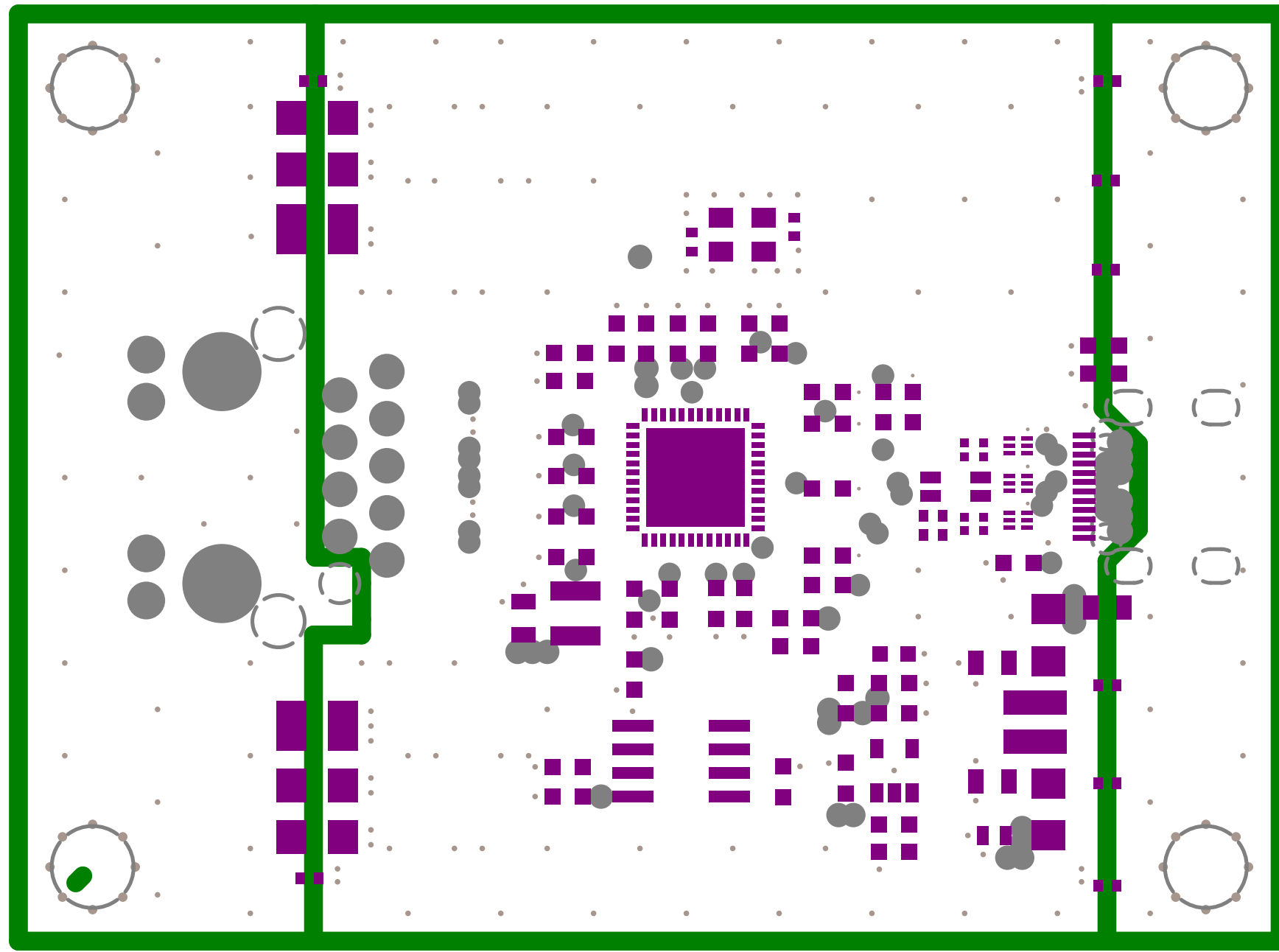


Layer	Name	Material	Thickness	Constant	Board Layer Stack
1	Top Overlay				
2	Top Solder	Solder Resist	0.013mm	3.8	
3	Top Layer	Copper	0.035mm		
4	Dielectric 1	7628	0.200mm	4.6	
5	GND	Copper	0.018mm		
6	Dielectric 2	FR4	1.065mm	4.6	
7	Power plane/GND	Copper	0.018mm		
8	Dielectric 3	7628	0.200mm	4.6	
9	Bottom Layer	Copper	0.035mm		
10	Bottom Solder	Solder Resist	0.013mm	3.8	
11	Bottom Overlay				

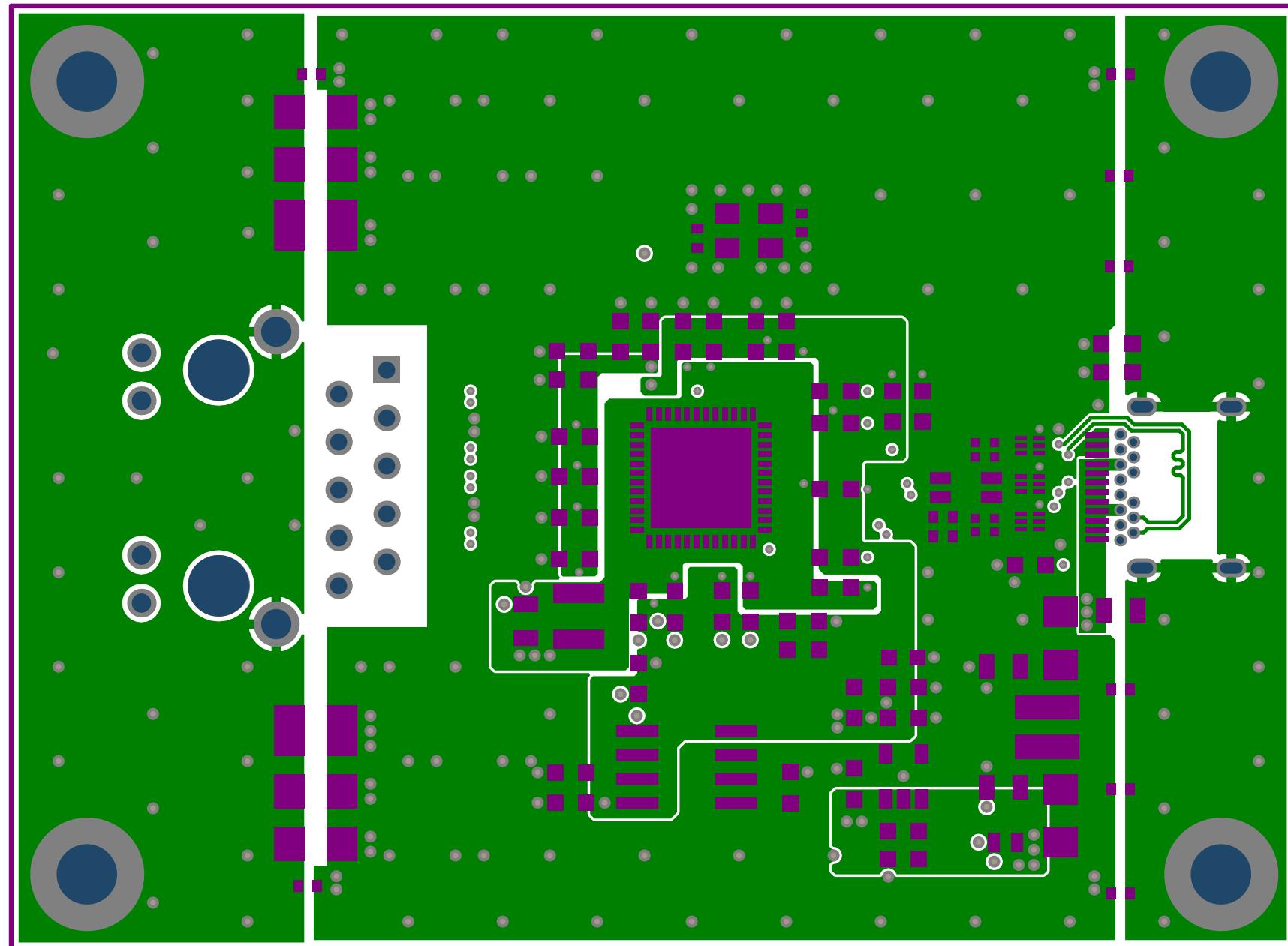


Layer	Name	Material	Thickness	Constant	Board Layer Stack
1	Top Overlay				
2	Top Solder	Solder Resist	0.013mm	3.8	
3	Top Layer	Copper	0.035mm		
4	Dielectric 1	7628	0.200mm	4.6	
5	GND	Copper	0.018mm		
6	Dielectric 2	FR4	1.065mm	4.6	
7	Power plane/GND	Copper	0.018mm		
8	Dielectric 3	7628	0.200mm	4.6	
9	Bottom Layer	Copper	0.035mm		
10	Bottom Solder	Solder Resist	0.013mm	3.8	
11	Bottom Overlay				

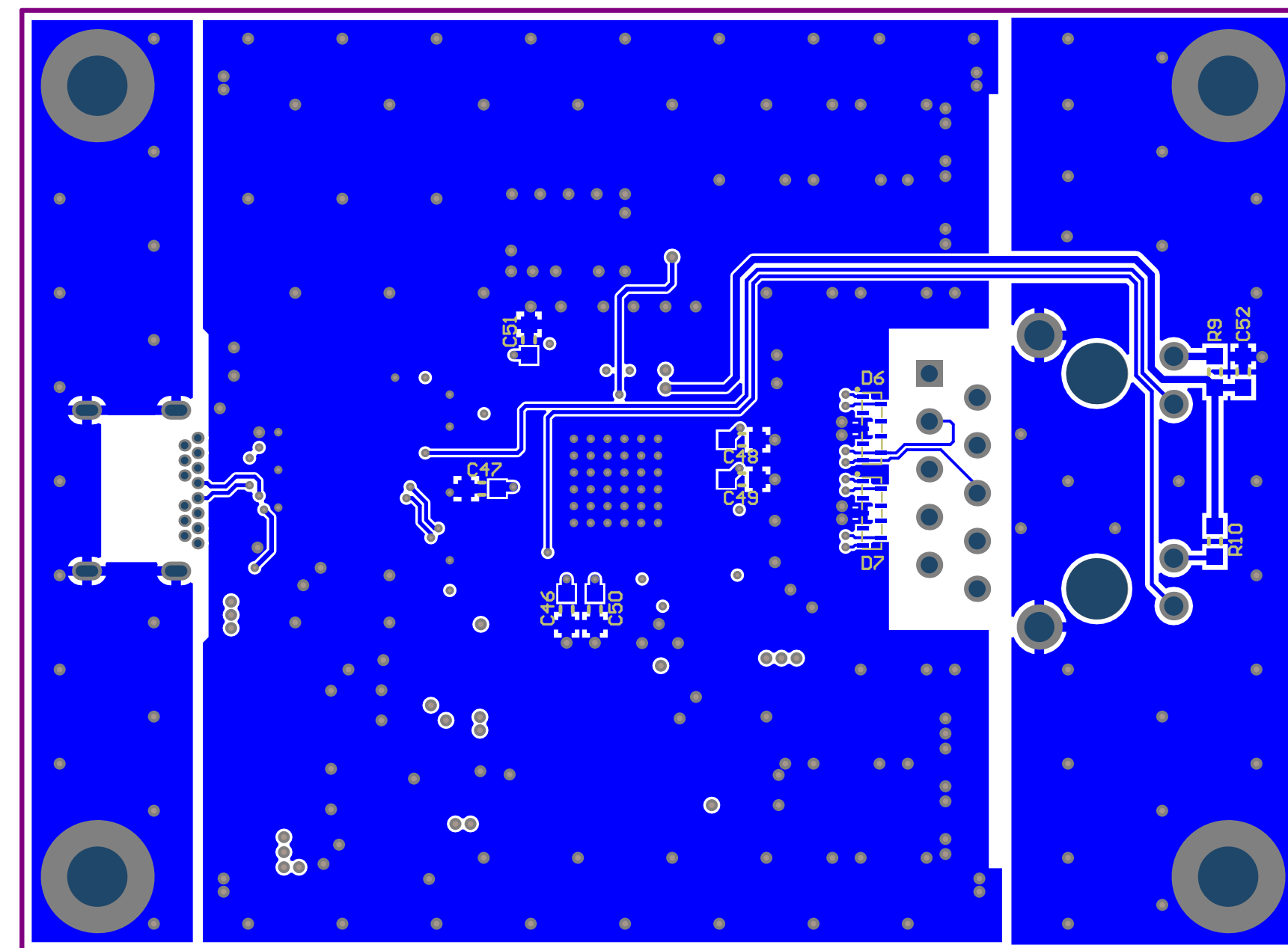
Inner Layer1 (GND Plane)



Inner Layer2 (Power/GND Plane)



Bottom Layer



Bottom Layer

