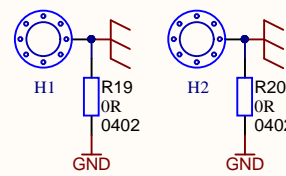
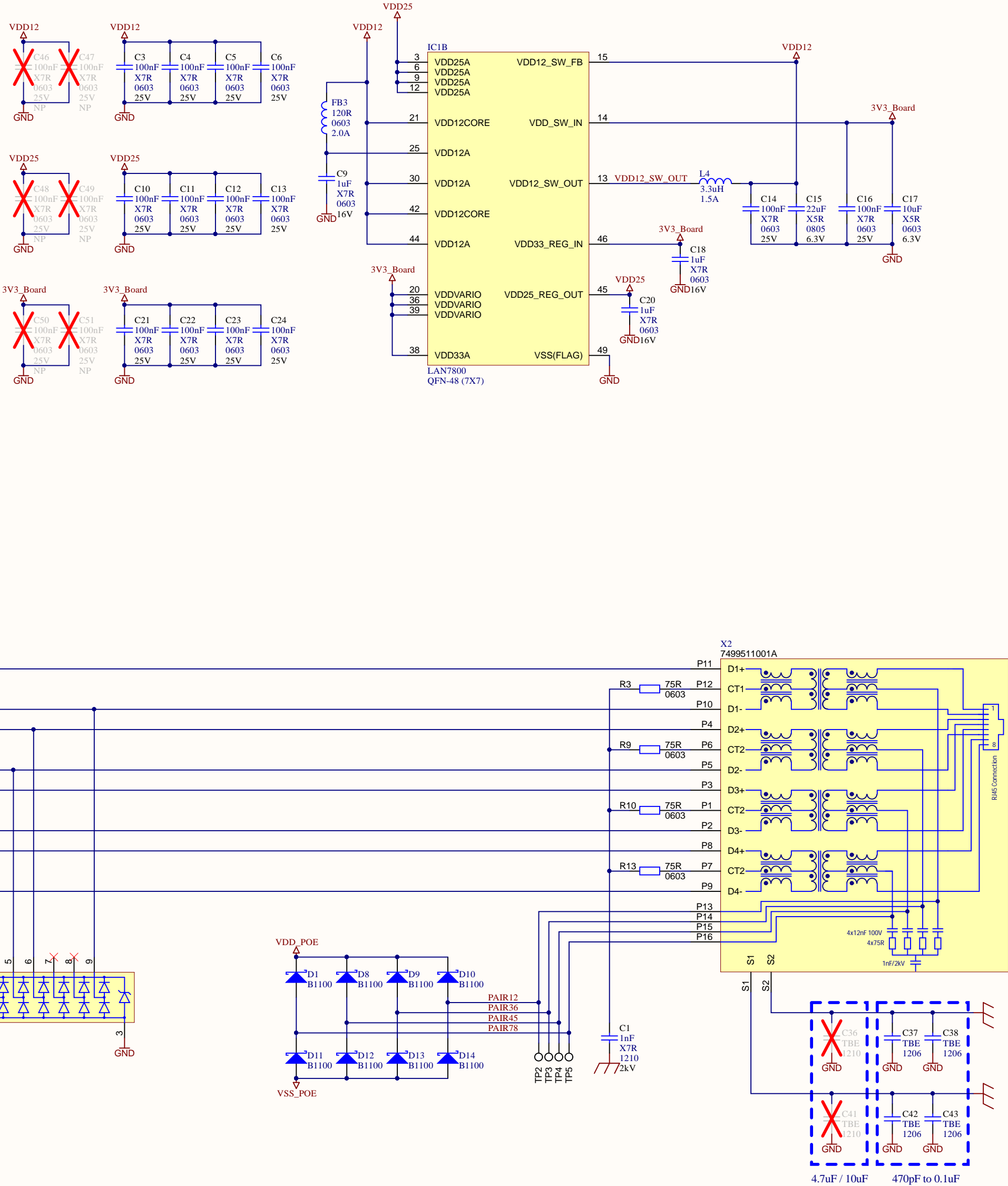
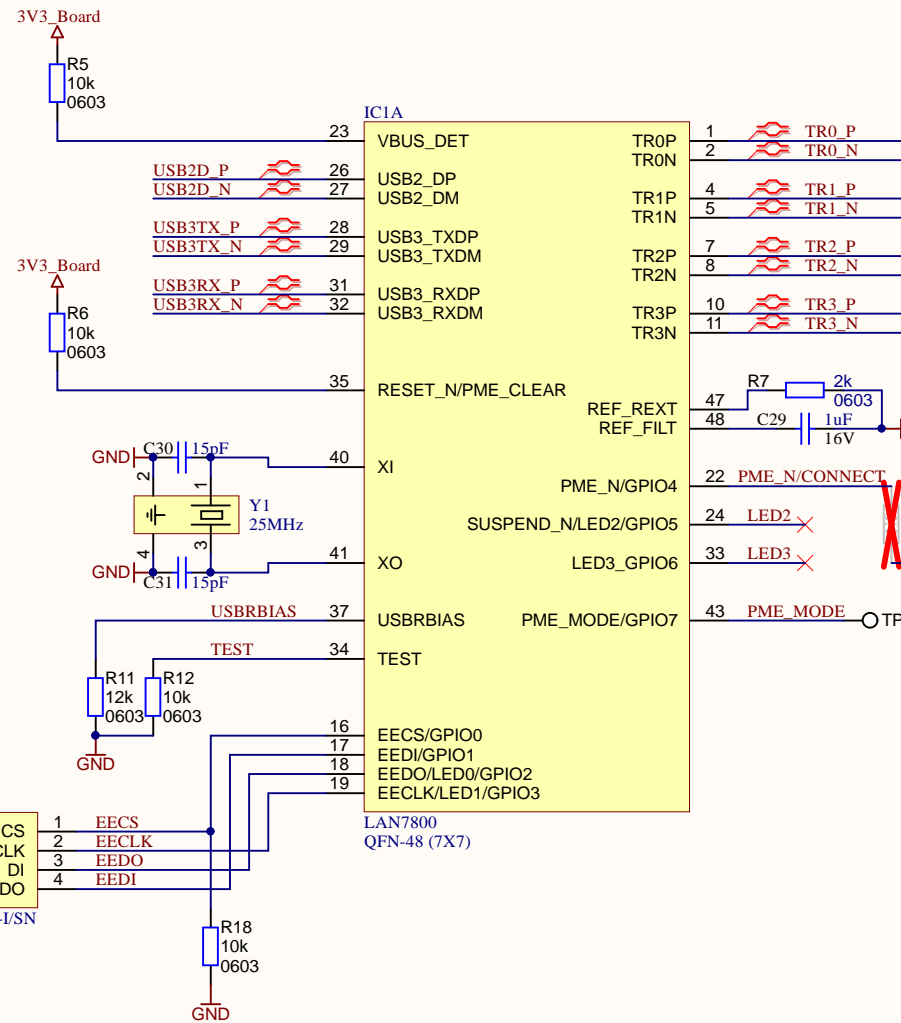
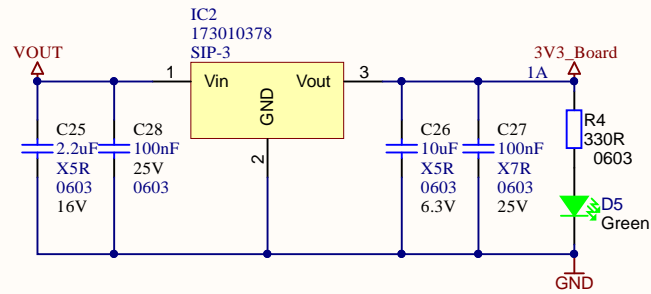
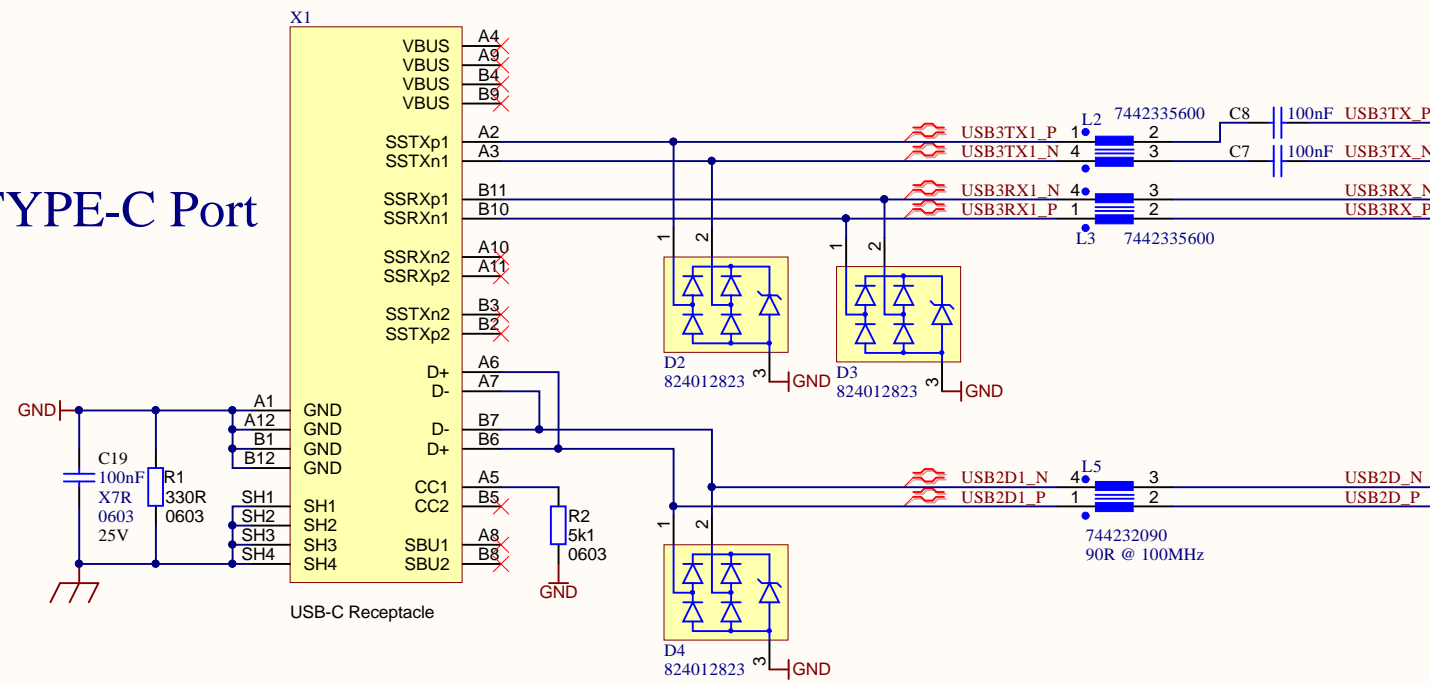


USB TYPE-C Port



| Rev. | Content | Date | Name |
|----------------------|-------------------------|----------------------------------|-----------------------|
| 1.0 | Original Document | 31-10-2021 | Nattawut |
| 1.1 | Remove Net SSRX2, SSTX2 | 02-10-2022 | Nattawut |
| 1.2 | Improve for EMC | 10-02-2023 | Nattawut |
| 1.3 | Update C2, C25 | 04-03-2023 | Nattawut |
| | | | |
| Size: A3 | | Document Number: 01-USB_C_SchDoc | Modified By: Nattawut |
| Print Date: 4/3/2023 | | Design Date: Sun 31th Oct, 2021 | Sheet: 1 of 2 |

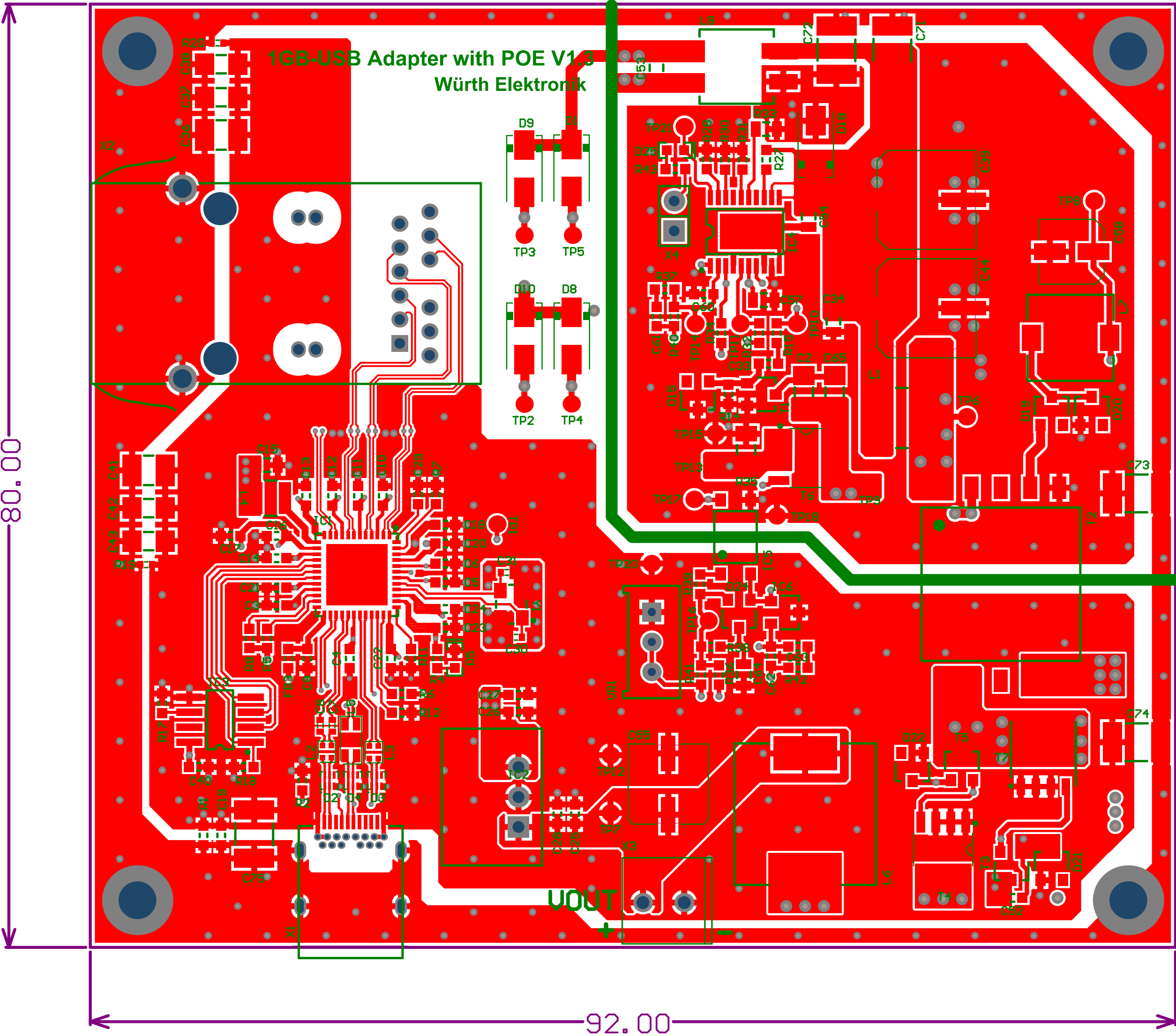
WÜRTH Elektronik eiSos

1GB_USB Adapter with PoE
Ethernet and USB-C ports

Customer:

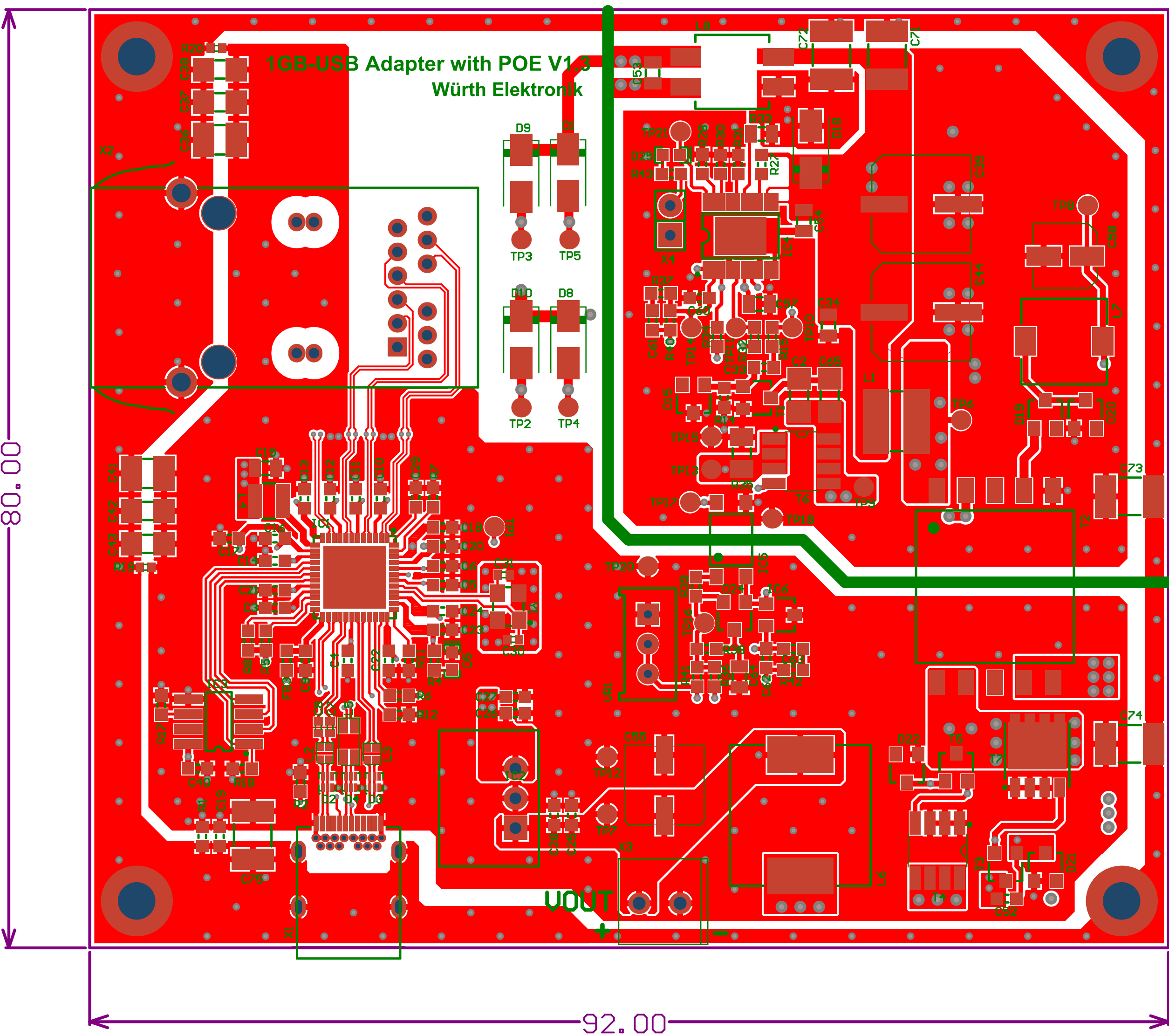
Rev 1.3

Top Layer



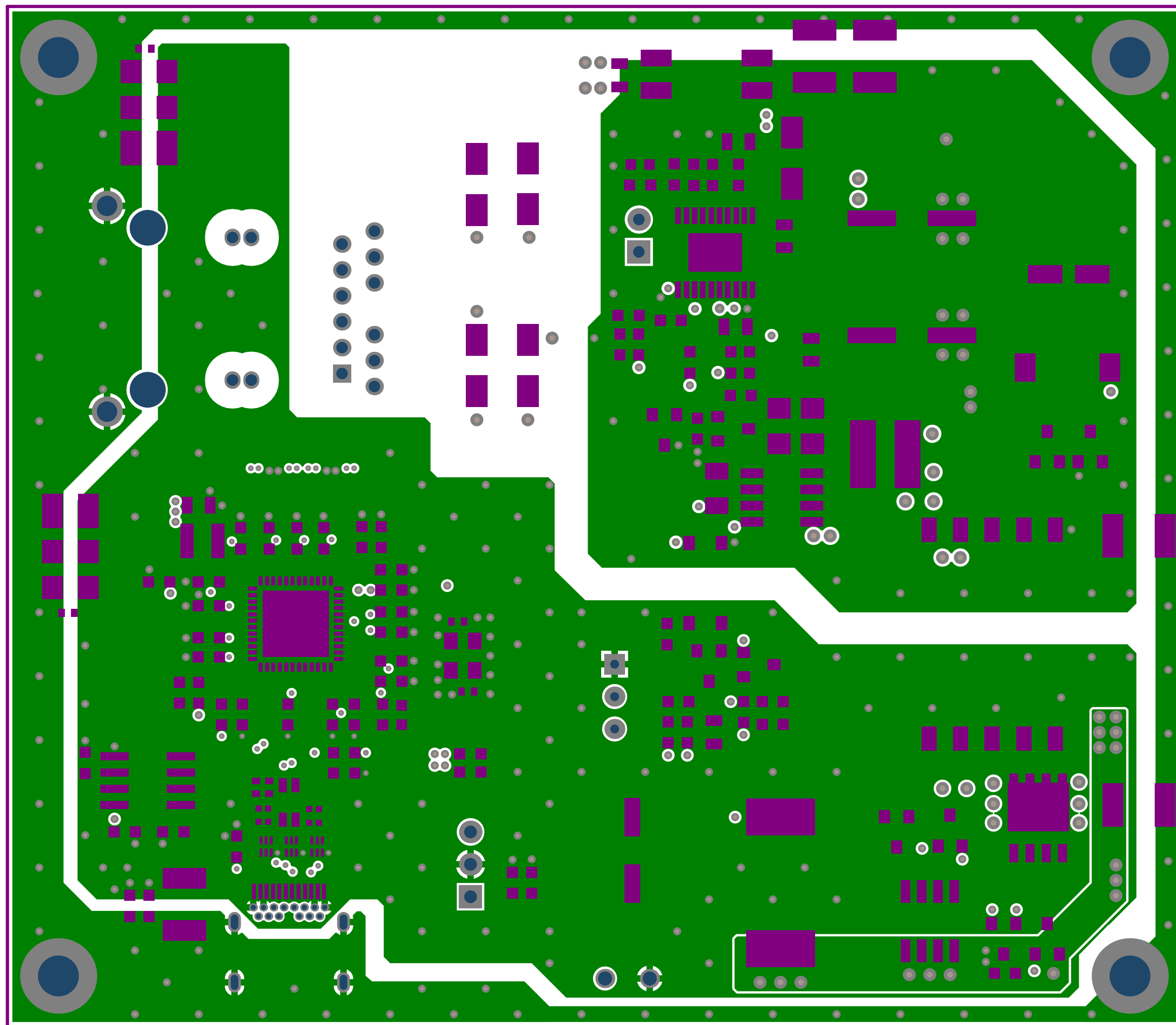
| Layer | Name | Material | Thickness | Constant | Board Layer Stack |
|-------|----------------|---------------|-----------|----------|-------------------|
| 1 | Top Overlay | | | | |
| 2 | Top Solder | Solder Resist | 0.010mm | 3.8 | |
| 3 | Top Layer | Copper | 0.035mm | | |
| 4 | Dielectric 1 | 7628 | 0.200mm | 4.6 | |
| 5 | Signal Layer 2 | Copper | 0.018mm | | |
| 6 | Dielectric 3 | Core-009 | 1.065mm | 4.6 | |
| 7 | Signal Layer 3 | Copper | 0.018mm | | |
| 8 | Dielectric 2 | PP-006 | 0.200mm | 4.6 | |
| 9 | Bottom Layer | Copper | 0.035mm | | |
| 10 | Bottom Solder | Solder Resist | 0.010mm | 3.8 | |
| 11 | Bottom Overlay | | | | |

Top Layer

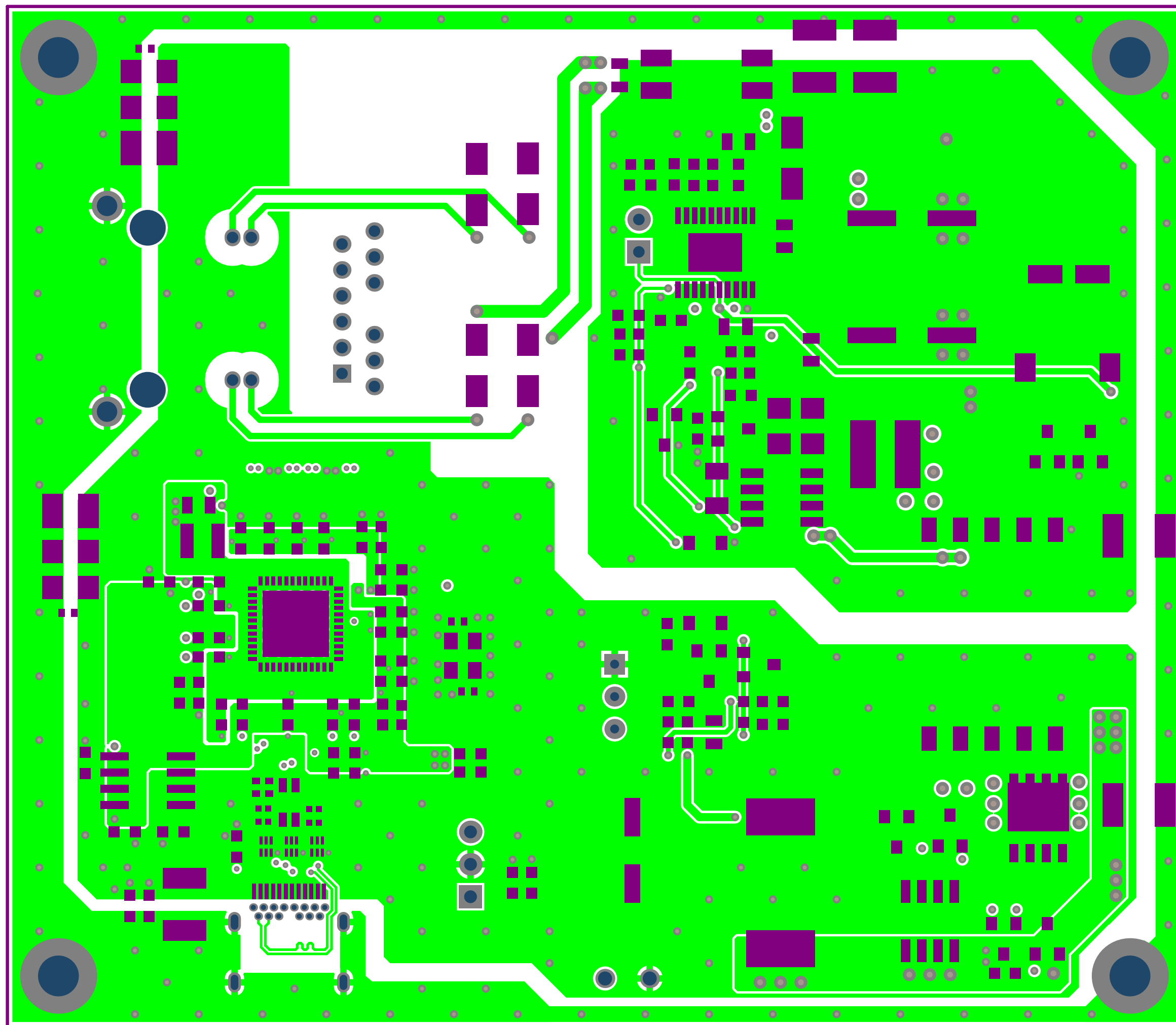


| Layer | Name | Material | Thickness | Constant | Board Layer Stack |
|-------|----------------|---------------|-----------|----------|-------------------|
| 1 | Top Overlay | | | | |
| 2 | Top Solder | Solder Resist | 0.010mm | 3.8 | |
| 3 | Top Layer | Copper | 0.035mm | | |
| 4 | Dielectric 1 | 7628 | 0.200mm | 4.6 | |
| 5 | Signal Layer 2 | Copper | 0.018mm | | |
| 6 | Dielectric 3 | Core-009 | 1.065mm | 4.6 | |
| 7 | Signal Layer 3 | Copper | 0.018mm | | |
| 8 | Dielectric 2 | PP-006 | 0.200mm | 4.6 | |
| 9 | Bottom Layer | Copper | 0.035mm | | |
| 10 | Bottom Solder | Solder Resist | 0.010mm | 3.8 | |
| 11 | Bottom Overlay | | | | |

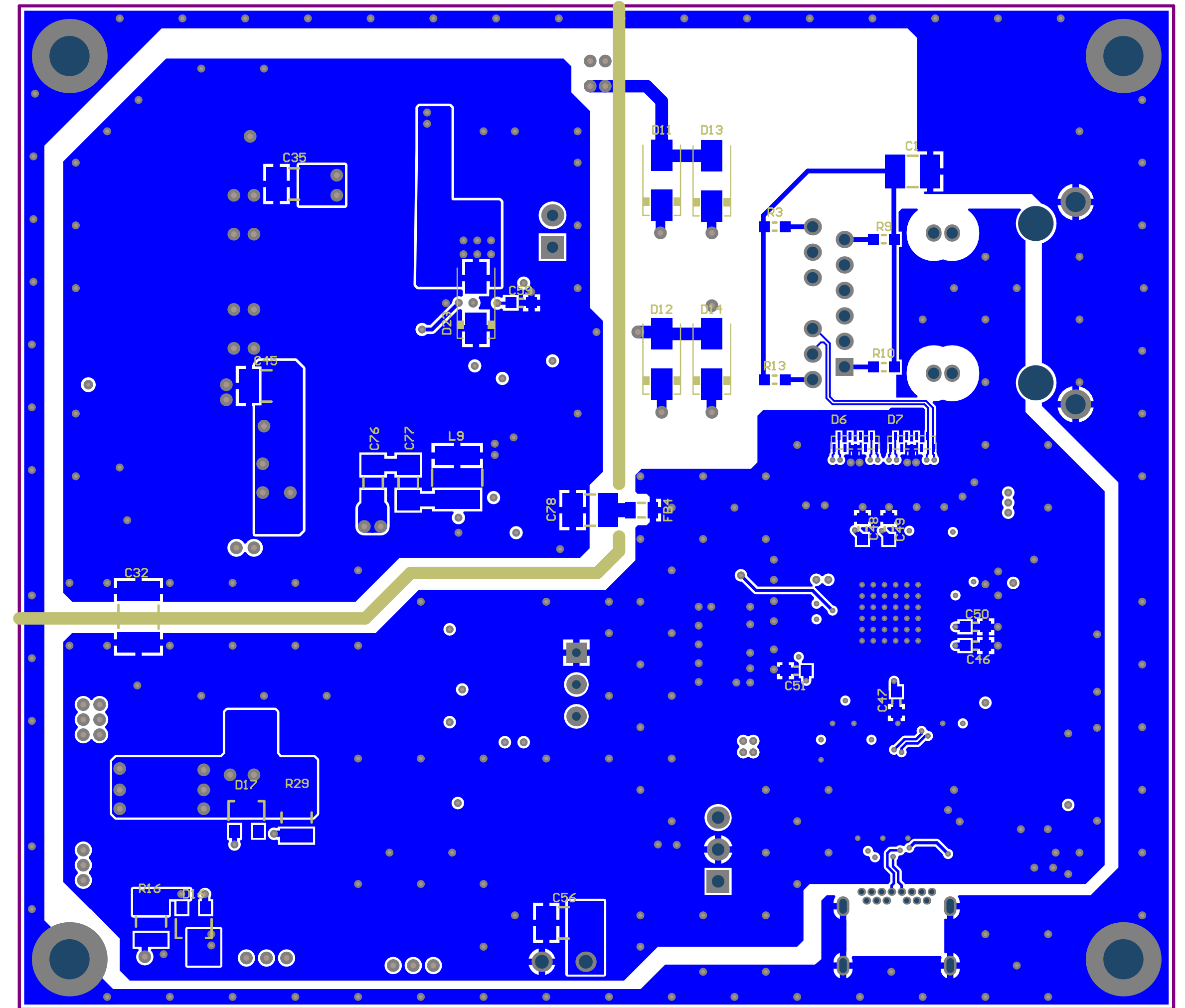
Inner Layer2 (GND Plane)



Inner Layer3 (Power/GND Plane)



Bottom Layer



Bottom Layer

