

Würth Elektronik ICS GmbH & Co. KG

Intelligent Power & Control Systems

Gewerbepark Waldzimmern · Würthstraße 1 · 74676 Niedernhall · Germany

Phone: +49 7940 9810-0 · Fax: +49 7940 9810-1099

ics@we-online.com · www.we-online.com/ics



Central Electrical Unit

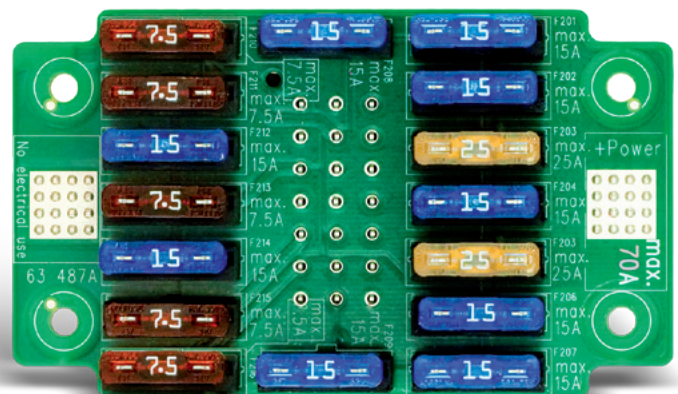
16-0 Module

Ref : 63487

REDLINE

Features

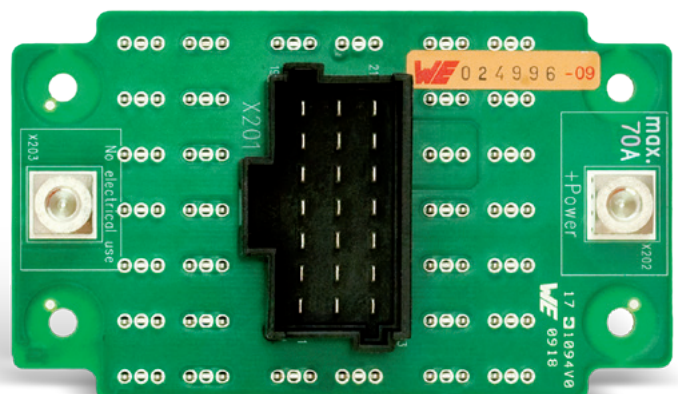
- Power supply 12 V or 24 V onto 1 Powerelement (+Power)
- 16 ATO fuseholders (up to 25 A)
- Cable harness connection on the rear side of the module via JPT/MCP compatible: 3 row, 21 way connector



Front View

Options

- Installation of fuses or circuit breakers according to customer requirements



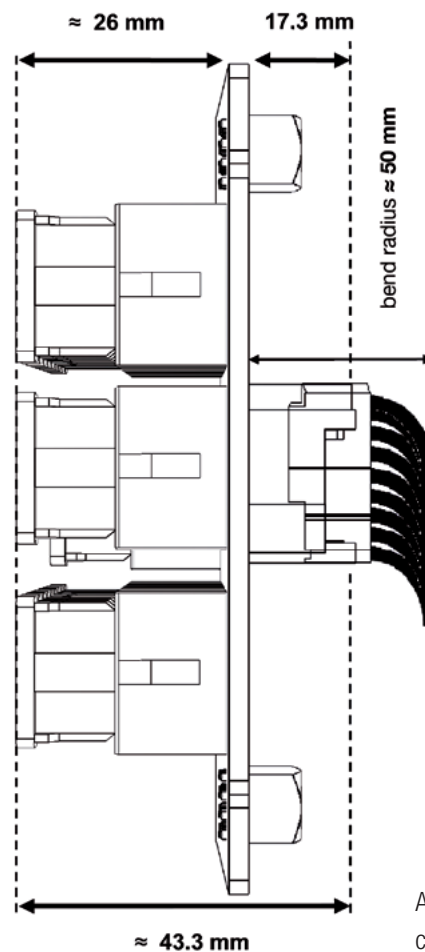
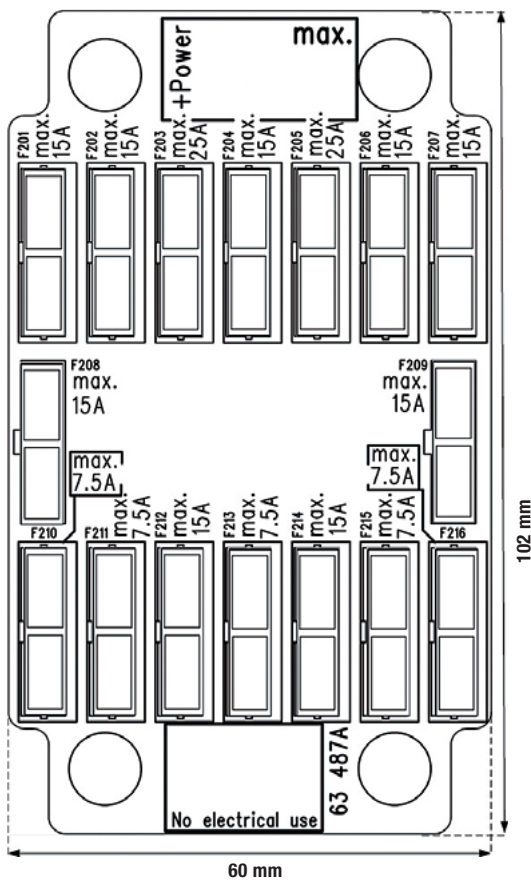
Rear View

Applications

Switching and protection of common functions in vehicles such as front and rear lights, radio, clock, accessories, light switches etc.

Central Electrical Unit 16-0 Module

Dimensions



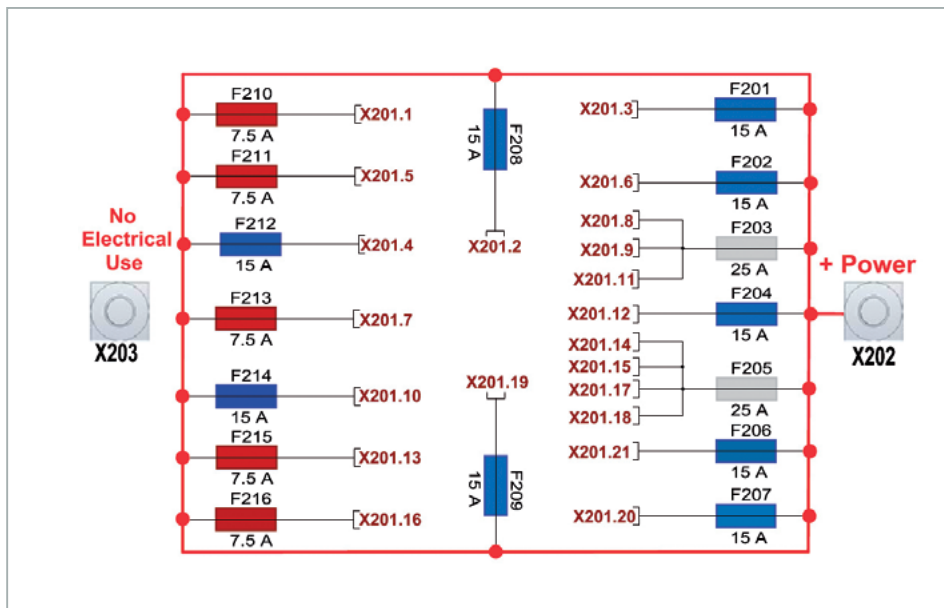
Approximate
component size
(depending on
components)

Technical Data

Temperature range	-40 °C to +80 °C
Max. supply current	Max. 85 A by 80 °C ambient
Output connection	JPT/MCP compatible, 3 row / 21 way black connector
Input connection (power stud)	Powerelement female M5 16 pins Max. mounting torque: 2.2 Nm

Central Electrical Unit 16-0 Module

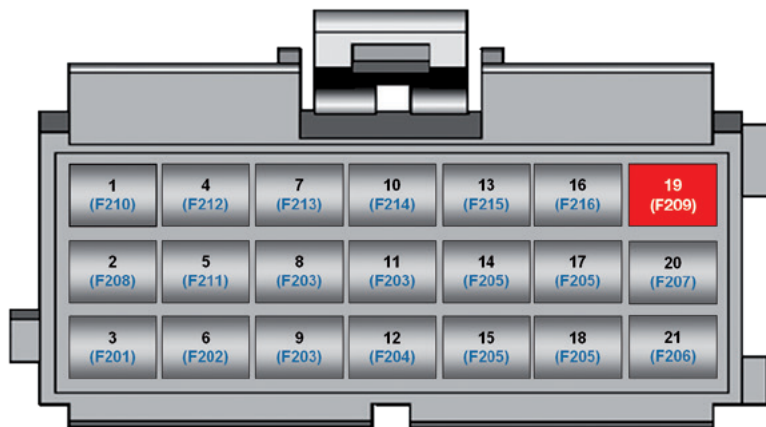
Electrical Schematic



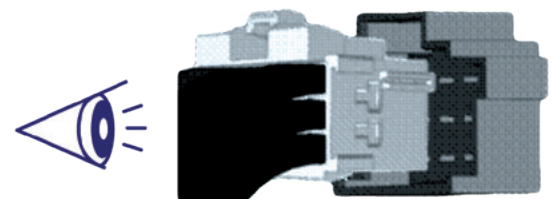
Fuse Rate Table

Fuse connected to +Power	Amperate Max.
5	7.5 A
9	15 A
2	25 A

Connector: 1 black JPT 21 (X201)



Female connector required for cable harness connection (view on cable entry)



Male Plug on board

Pin outs on the connector correspond to the associated component on the board.
(i.e. component F209 is connected to pin 19 from connector X201)