



HANDBOOK ICS EXPO VAN

WÜRTH ELEKTRONIK MORE THAN YOU EXPECT

ICS EXPO VAN

SUMMARY

Danger warnings.....	3
Checklist build-up.....	4
Checklist dismantling.....	13
General Information.....	16
Technical Equipment.....	18
Engine compartment.....	22
Care instructions.....	23
Information about the vehicle.....	24



DANGER WARNINGS

Dimensions:

- **The vehicle has a maximum height** of 3.25 meters
- **The width of the vehicle is** 2.50 meters WITHOUT exterior mirrors
- **The length is** 8.20 meters

Swing out:

- The rear of the vehicle swings out when driving. This should be taken into account for curve radii
- A guide is recommended for shunting movements, as the upper swivel-out corner is not directly visible from the driver's seat and with the reversing camera

Reversing camera:

- Despite the reversing camera (sees the ground and the lower ends), a guide is absolutely necessary when reversing, as the upper rear swings out very sharply and cannot be seen with the camera and mirrors

Exterior doors:

- The outer doors (flaps and side door) must ALWAYS be locked with ALL locks when driving. A door that only falls into the lock is not sufficiently secured

Transport lock:

- All exhibits, superstructures, equipment, etc. must be stowed in such a way that they cannot move even in the event of emergency braking

Weight

- The vehicle may weigh a maximum of 3.5tons. The samples and equipment are precisely weighed so as not to exceed the weight limit. Therefore, no additional samples or similar may be loaded.

ALL VEHICLE DETAILS CAN BE VIEWED ON THE FOLLOWING PAGES.

ICS EXPO VAN

CHECKLIST BUILD-UP

1. Release the handbrake



2. Lower the chassis (lower arrow)

- The vehicle must be level and lowered, otherwise damage may occur to the ramps
- To do this, release the handbrake & switch on the ignition
- Press the switch to lower the show truck once (down arrow)
- Duration approx. 60 seconds
- Switching the level control ON and OFF
- The controls are located to the left of the steering wheel.



3. Switch off the ignition

ICS EXPO VAN

CHECKLIST BUILD-UP

4. Establish external power connection.
For safety reasons, unwind the cable reel completely.



4. Unlock outer flaps and fold upward



5. Enter through the side door. The staircase can be extended by lifting the flap.



ICS EXPO VAN

CHECKLIST BUILD-UP

6. Extend ramps with cable winches using rocker switch. Do not fully extend ramp with stairs, as stairs must be folded down.

IMPORTANT!

Ensure that the rope is only retracted with the "IN" button. Otherwise the limit switch will not work and considerable damage may occur.



Two anchor points are attached to the side ramp using an adapter rope. The safety lugs on the hooks should be tightened.



7. Fold down the steps and remove the step pads. Then lower the ramp completely.
 - To adapt to different installation locations, the feet of the stairs can be adjusted by turning them to ensure a secure footing.



ICS EXPO VAN

CHECKLIST BUILD-UP

8. Unhook the rope.
 - After opening the flaps, retract the cable and stow the switch with cable in the round opening, then attach the cover plate. When retracting, exert some counter-pressure on the cable and ensure that it is retracted correctly.
 - The winches are covered by metal plates.

IMPORTANT!

The cover plates MUST be removed and stowed away for the journey! Appropriate pockets are located inside the vehicle.

- If the rope is wound up the wrong way round, the ramp can no longer be extended as the safety switch will engage.

Emergency plan

- Open hexagon socket screw (3mm wrench)
- Pull back the push-button pin
- Extend the ramp (with the IN button)
- Wind up the rope the right way round
- Extend the push-button pin again (must rest on the floor) and tighten again



ICS EXPO VAN

CHECKLIST BUILD-UP

9. Assemble the retaining bars for the roof and the railing bars. These are located in the sideboard behind the driver's cab. The bar tables and roll-ups are also located here.



Side ramp

- First insert the roof struts at the bottom and screw them in place, then fix them at the top with bolts and locking pins. Also secure the railings with safety pins.
- The boom is stored in the sideboard behind the driver's cab.
- If there are a lot of people on the platform, the platform can also be supported with two support blocks. These are located under the passenger seat.



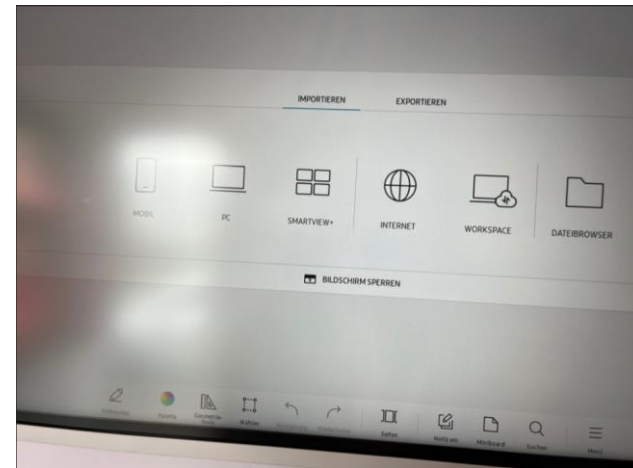
ICS EXPO VAN

CHECKLIST BUILD-UP

10. Switch on the lights and prepare the screen

Screen

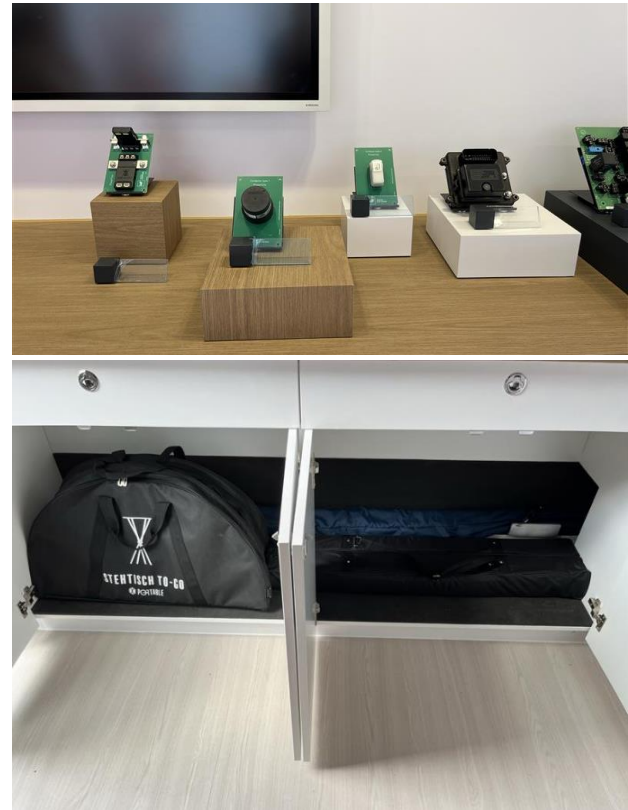
1. Switch on at the bottom right of the screen.
2. The monitor can be operated via touch with a stylus. This is stored in the drawer below the start screen appears. A button with 3 stripes appears on the left and right of the screen. Select these.
3. Various connection variants have appeared (mobile, PC, Smartview, Internet Workspace & file browser).
4. A USB stick with Company Video and HV Video is inserted into the side of the USB port. For USB stick please select file browser and open desired file OR open already saved files under Collections -> Downloaded files.
5. For PC: Connect either via WLAN or via HDMI cable. The connections are located at the counter and in all pop-up sockets. The laptop can be used at the counter for presentations/lectures.
6. For sound for the videos: Switch on the sound system (see page 19), no further settings are necessary.



ICS EXPO VAN

CHECKLIST BUILD-UP

11. Take product cubes, product displays, samples and matching product labels from the sideboards and set them up
12. Set up and equip the brochure holder
13. Take the bar tables and covers out of the sideboard and set them up
14. Prepare advertising material, catering, coffee machine and kettle, charge hand vacuum cleaner for later dismantling.



15. If required: Set up counter
 - The counter can be opened up and extended by twice the area. To do this, simply pull out the extension at the front towards the stage. The extension board is located under the counter and is secured with a metal hook.



CHECKLIST BUILD-UP

16. If required: Set up and switch on displays

- The displays and holders are stowed in the sideboard behind the driver's cab.
- Plug & Play: Remove the cable flaps, place the displays & brackets on the sideboard and plug in the cables - done.
- Both HMIs are equipped with a demo version. The i12 is also connected to the IP camera.
- **Cables are very sensitive, do not pull or bend them! Handle with care!**

17. If required: Switch on the heating (see page 20)

18. If required: Switch on and adjust the microphone and sound equipment (see page 19)



ICS EXPO VAN

CHECKLIST BUILD-UP

18. If required: Set up rain protection
- In the event of rain, a rain cover can be attached to the flap and the platform. This is located in a cover behind the seats in the driver's cab.
 - It is attached using rotating eyelets located on the roof and on the sides of the platform.
 - The rain cover can be attached at the front with an elastic band and carabiner.
 - In the event of rain, the inclination of the platform roof can be adjusted using the screws so that the rain flows off to the front and not into the interior of the vehicle.



7. Bienvenue Di

CHECKLIST DISMANTLING

1. Check loose material (samples, product labels etc.) for completeness and stow away in the cupboards
2. Clean the coffee machine and tea maker
3. Dispose of garbage
4. Clean and lock the fridge if necessary
5. If necessary: Clean the floor and furniture. Cleaning utensils can be found in the sideboard opposite the kitchen.
6. Close the locks on the furniture
7. Remove rain protection, holding and railing bars
8. Remove the metal sheets above the rope winches and stow them in the storage bag
9. Extend the ramp ropes and attach them to the ramps
10. Raise the side ramp with steps slightly
11. Put on the protective padding
12. Fold in the steps
13. Retract both ramps to the end stop
14. Switch off lights, screen & sound equipment
15. If necessary: Switch off the heating
16. Close the side doors

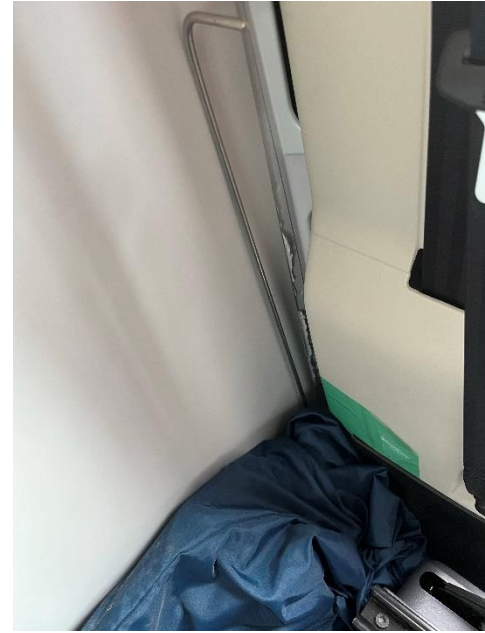
ICS EXPO VAN

CHECKLIST DISMANTLING

17. Close side flaps and lock locks

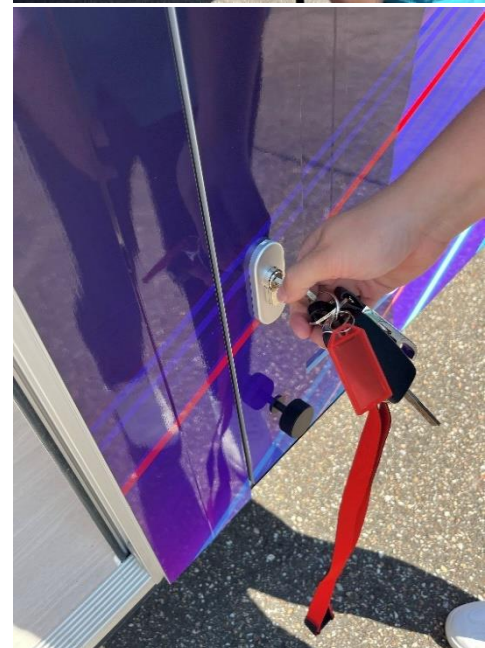
Closing the flap

There is a metal hook for smaller people to pull down the flaps. This is stowed in the driver's cab behind the driver's seat.



Flap locks

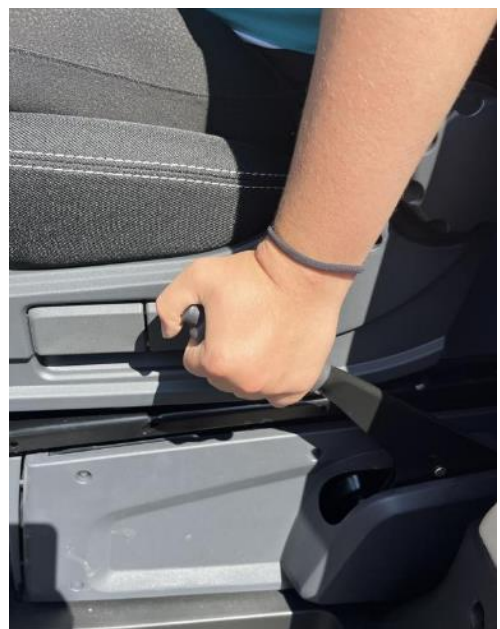
The locks on the side flap and the door **MUST ALL** be locked when driving. If the doors are not locked, serious damage, an accident or personal injury may occur.



ICS EXPO VAN

CHECKLIST DISMANTLING

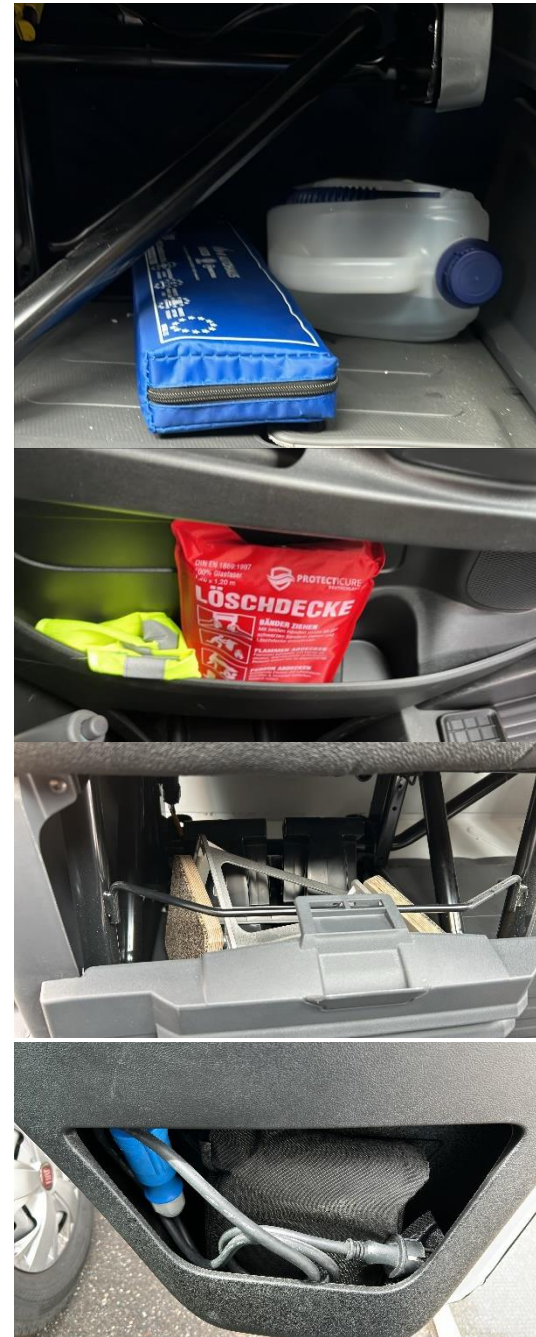
18. Disconnect external power supply and roll up and load cable reel
19. Ignition on
20. Inflate the air suspension (press the up arrow once and wait approx. 30 seconds)
21. Release handbrake
22. **Safe journey** 😊



GENERAL INFORMATION

First aid kit, warning triangle, safety vests

- The warning triangle and first aid kit are located under the middle seat. A canister of AdBlue is also located there. **If this is used up during the tour, it must be replaced with a new canister.**
- There is a fire blanket and high-visibility vests on the driver's side.
- There are wheel chocks under the passenger seat, which can be used to additionally secure the vehicle when it is on a slope. The platform supports are also located there.
- The connecting cable for the external power supply and a puncture kit for the tires are located in the passenger door.
- There is also a screwdriver and towing hook.

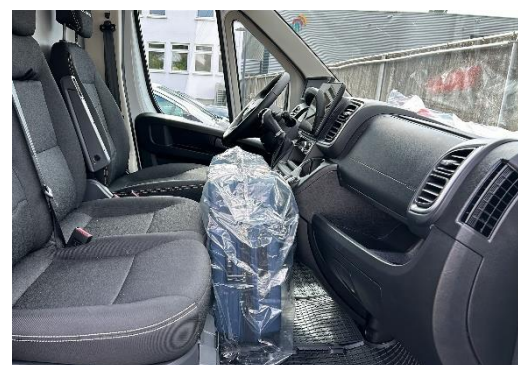
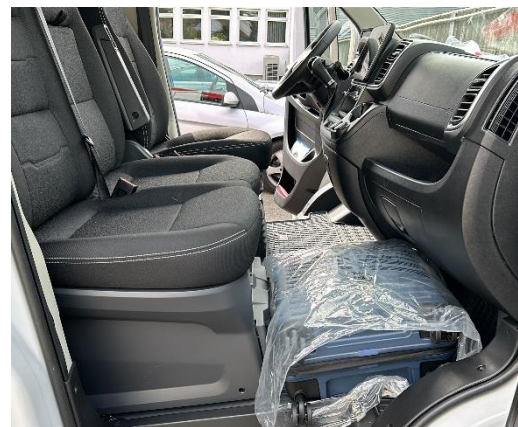


ICS EXPO VAN

GENERAL INFORMATION

Stowing luggage

- Make sure that all luggage is secured so that it cannot move during the journey.
- To stow suitcases and other luggage, there are tensioning straps in the rear of the vehicle. These can be stretched around the counter and used to secure the suitcases.
- If only one or two people are traveling in the driver's cab, the luggage can also be stowed securely on the middle seat in the driver's cab.



ICS EXPO VAN

TECHNICAL EQUIPMENT

Refueling and topping up AdBlue

- The openings for refueling and topping up AdBlue are located to the right of the driver's door
- Diesel must be filled up
- The opening for AdBlue is marked in blue
- Please use the DKV fuel card you received, this is located in the document pocket, **PIN: 2313**



360° camera

The 360° camera shows the vehicle's surroundings and helps with parking. There is no additional "beeper" for parking.



ICS EXPO VAN TECHNICAL EQUIPMENT

Sound system

1. Set the switch to "ON" on both devices
2. Channel 1 (CH1) controls the right speaker, Channel 2 (CH2) controls the right speaker

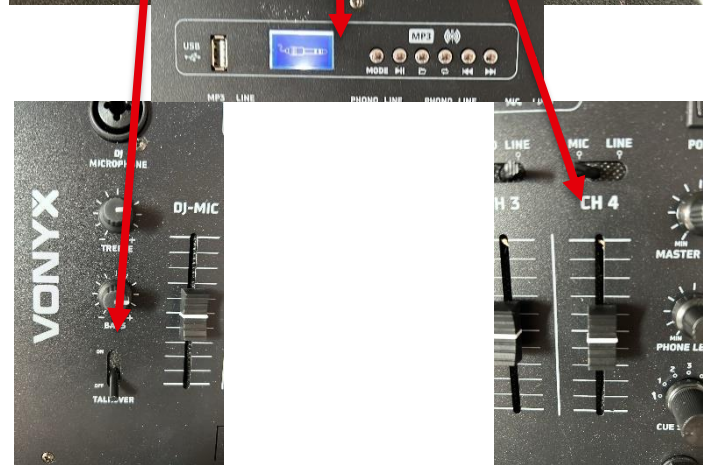
→ We recommend that you do not change the settings here, as the default settings are sufficient

4. The handheld microphone runs via channel 4 (CH4). The volume can be adjusted via the controller. Switch on the microphone, it is directly connected and can be used for presentations, announcements, etc.

→ We recommend that you do not change the settings here, as they are already correctly preset.

Use the Talkover slider if a video with sound on the screen is to be drowned out by the microphone.

5. It is also possible to play background music via USB.
6. **Do not forget to switch off the microphone and the system at the end of the event!**



ICS EXPO VAN

TECHNICAL EQUIPMENT

Infrared radiant heater

- The on/off switch is located on the right rear side of the radiant heater
- If the switch is set to ON, the remote control must also be operated to switch the appliance on.



Refrigerator

- The refrigerator switches off automatically when the external power supply is disconnected. The light and cooling level can be set using a switch in the refrigerator. The refrigerator must be locked before driving.



ICS EXPO VAN

TECHNICAL EQUIPMENT

Ceiling lamps

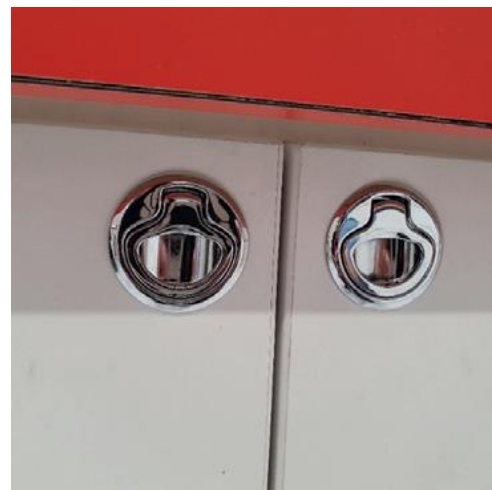
- The ceiling lamps can be rotated to achieve ideal illumination.

The lamps should always be in the tilt position to ensure good ventilation of the ceiling!



Door locks

- The doors must be firmly locked before driving off.



Sockets and switches

- Various sockets are located in the cupboards and as table sockets in the furniture. The light switch strip is located next to the side access door. The color of the LED light on the sideboards can be set using the remote control. This is located in a holder next to the sound system.

ENGINE COMPARTMENT



1. Filling with cooling water
2. Filling with servo-hydraulic fluid (in case of warning, please visit workshop)
3. Filling windshield wiper fluid (observe antifreeze)
4. Filling with engine oil
5. Oil dipstick
6. Brake fluid (in the event of a warning, please visit a workshop)
7. Emergency air suspension filling (see ALKo user manual)

IMPORTANT: The maintenance intervals specified by FIAT for oil changes, filter changes, V-belts and timing belts, etc. must be observed.

If warning signs appear in the display, please contact Juliana Bahmüller, Tel. +49 7940 9810 1100

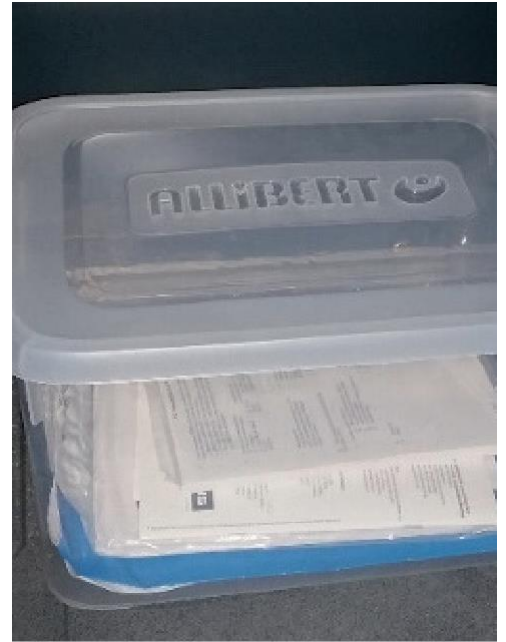
CARE INSTRUCTIONS

- Furniture can be cleaned with water and washing-up liquid
- The floor should only be wiped with clean water. No greasy or oily cleaning agents should be used.
- Stubborn stains can be cleaned with VISS scouring milk with microcrystals.
- Washing-up liquid and wipers are located in the sideboard at the back.

INFORMATION ABOUT THE VEHICLE

All documents and other accessories are stored in a box in the vehicle, including among others

- Installation instructions for reversing camera
- Remote controls
- Operating instructions Monitor
- Refrigerator operating instructions
- Coffee machine operating instructions
- Etc.



If you have any questions, please contact:

Sophia Hessenauer

Sophia.hessenauer@we-online.de

Tel.: +49 7940 9810 1502

By proxy:

Nasiba Nawal

Nasiba.nawa@we-online.de

Tel. +49 7940 9810 1508