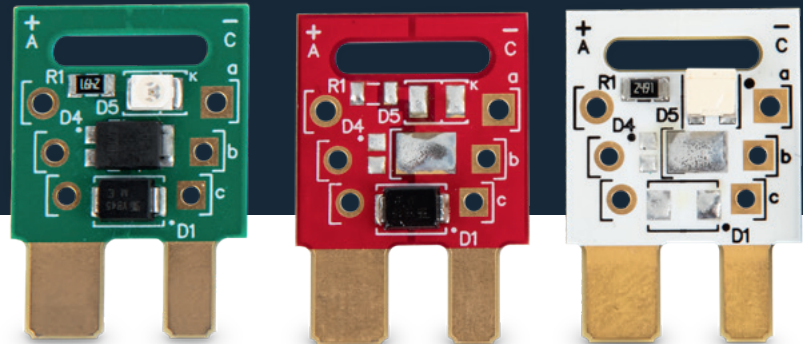


SMD FLEXCON

Standard parts



The **SMD FlexCon** is a PCB designed in the format of a fuse, designed for easy and direct insertion into an ATO socket on a CEU. It allows flexible integration of various soldered components – such as diodes or LEDs – across multiple pad sizes and layout configurations.

When paired with the Polarised ATO FUSE Socket, the design ensures correct orientation and prevents accidental polarity reversal. The contacts are chemically gold-plated and available in two widths: 4.2 mm and 6.3 mm.

Each SMD FlexCon is protected with a dual-sided coating compliant with the WE ICS standard and is supplied with an identification label for easy tracking. Layout options include green, red, and white solder masks.

Standard versions of the SMD FlexCon are presented on this document. The integration of customised soldering parts can be realised according to your requirements. Contact us for more information.

Applicable components in SMD technology:

- DO-214AB
- DO-214AA
- SOD123FL
- DO-214AC 5 A
- Fuse tester LED combo

Alternative THT components:

- Pitch 14 mm wire diameter 0.9 – 1.2 mm
- Pitch 12 mm wire diameter 0.7 – 1 mm
- Pitch 10 mm wire diameter 0.7 – 1 mm

Characteristics	
Voltage	Up to 48 V VDC
Temperature	-40 °C to +85 °C

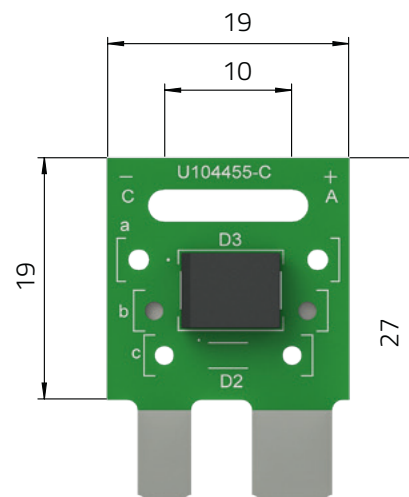
APPLICATIONS

- CAN line termination equipped with 120 Ω resistors
- Diodes with modified values for relays, voltage regulators, switches, and many more
- Temperature sensors for surveillance of the PDU or CEU temperature
- LED fuse check in order to determine fuse damage

PRODUCT BENEFITS

- Provide easy variance capability to your final customer
- Provide a simple and convenient way of replacing defective parts
- Elimination of the soldering step for CEU and PDU using Press-fit Technology for the polarised socket, enabling simplification of the design as well as the manufacturing of the assembly

DIMENSIONS

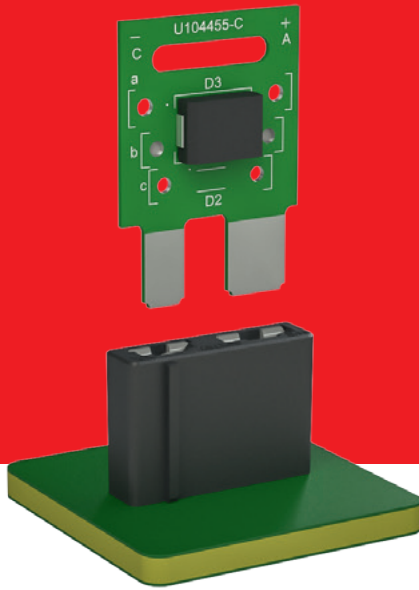


SMD FUSE FLEXCON

Standard parts

PERFECTLY THOUGHT OUT

To prevent the SMD FlexCon from being connected incorrectly to our PDUs or CEUs, we can employ a special socket. For polarised components, such as diodes or LEDs, this is particularly important.



INTEGRATION EXAMPLES

SMD FlexCon can be easily integrated into our Central Electrical Units or REDline Power Boxes.



FLEXCON VARIANTS

Article number	Description	Soldering type	PCB color
ICS-104455	Diode 5 A	SMT	Green
ICS-104490	Diode 5 A* // S5GC	SMT	Green
ICS-104591	Diode 10 A	SMT	Green
ICS-104753	Diode 1N5408K	THT	Green
ICS-104433	Bidirectional TVS diode 600 W	SMT	Red
ICS-104593	Fuse tester 24 V	SMT	White
ICS-105205	Fuse tester 48 V	SMT	White

*higher values will be evaluated on special request



For more information write us an e-mail ics@we-online.com, call +49 7940 9810-0 or visit us at www.we-online.com/ics

Würth Elektronik ICS GmbH & Co. KG
Intelligent Power & Control Systems
Gewerbepark Waldzimmern · Würthstraße 1
74676 Niedernhall · Germany
Tel.: +49 7940 9810-0 · Fax +49 7940 9810-1099
ics@we-online.com · www.we-online.com/ics

This item is a standard product, please consider the relevant datasheet notes. The user is responsible for the product's functionality in its purposed system environment. Technical content may be modified and changed by Würth Elektronik ICS GmbH & Co. KG without any notice.