



WENSS USER MANUAL

WÜRTH ELEKTRONIK NAVIGATION
AND SATELLITE SOFTWARE

VERSION 1.4.0

OCTOBER 27, 2023

WÜRTH ELEKTRONIK MORE THAN YOU EXPECT

Revision history

Manual version	SW version	Notes	Date
1.0.0	1.0.0.0	<ul style="list-style-type: none">Initial release	February 2020
1.1.0	1.2.0.0	<ul style="list-style-type: none">Updated software history	November 2020
1.2.0	1.3.0.0	<ul style="list-style-type: none">Updated software history	April 2023
1.3.0	1.3.0.0	<ul style="list-style-type: none">Updated meta data	May 2023
1.4.0	1.4.0.0	<ul style="list-style-type: none">Updated software history	October 2023

Abbreviations

Abbreviation	Name	Description
COM port	Communication port	
ACK	Acknowledgement	Message indicating that a request was successful.
BDS	Beidou	Chinese global navigation satellite system
DOP	Dilution Of Precision	
FSE	Field Sales Engineer	
Galileo		European global navigation satellite system
GLONASS	Global navigation satellite system	Russian global navigation satellite system
GNSS	Global navigation satellite system	General term for global navigation satellite system
GPS	Global Positioning System	American global navigation satellite system
GUI	Graphical User Interface	
HDOP	Horizontal Dilution Of Precision	
0xhh [HEX]	Hexadecimal	All numbers beginning with 0x are stated as hexadecimal numbers. All other numbers are decimal.
MID	Message identifier	Used in OSP to specify the message
NACK	No Acknowledgement	Message indicating that a request was not successful
NMEA	National Marine Electronics Association	Specification for communication. Used by GNSS receivers.
OSP	One Socket Protocol	Proprietary protocol for navigation messages.
PDOP	Position Dilution Of Precision	
PRN	Pseudo Random Noise	
RAM	Random-Access Memory	Volatile memory to store data.
RF	Radio frequency	Describes everything relating to the wireless transmission.

SNR	Signal-to-noise ratio	
TTFF	Time to first fix	Time between start-up of module and first fix after that
UART	Universal Asynchronous Receiver Transmitter	Allows communicating with the module of a specific interface.
USB	Universal Serial Bus	
UTC	Coordinated Universal Time	Primary time standard
VCP	Virtual Com Port	
VDOP	Vertical Dilution Of Precision	
WENSS	Würth Elektronik Navigation and Satellite Software	

Contents

1	Overview	6
1.1	Supported GNSS modules	6
1.2	System requirements	6
1.2.1	Supported operating systems	6
1.2.2	.NET Framework	6
1.2.3	Internet connection	6
2	Installation	7
2.1	Connect the EV-Board	7
3	Deinstallation	7
4	Operation	8
4.1	Starting the program	8
4.2	Structure of the GUI	9
4.3	Connect/Disconnect	9
4.4	Status bar	10
4.5	Navigation view	12
4.5.1	Status	13
4.5.2	Position	13
4.5.3	Movement	14
4.5.4	Date and time	15
4.5.5	Output	15
4.6	Satellite view	16
4.6.1	Table	17
4.6.2	Skyview	17
4.7	Configuration view	19
4.7.1	Module states	19
4.7.1.1	Reset	20
4.7.1.2	Shutdown	20
4.7.1.3	Power modes	20
4.7.2	Custom commands	21
4.7.2.1	Add custom command	21
4.7.3	Baud rate	21
4.7.4	Update rate	22
4.7.5	Message types	22
4.7.6	Output	24
4.8	Utilities view	25
4.8.1	Time-to-First-Fix measurement	25
4.8.2	Checksum calculation	26
4.9	Support	26
4.10	Log file	27
5	Software history	28
6	Important notes	29
6.1	General customer responsibility	29

6.2	Customer responsibility related to specific, in particular safety-relevant applications	29
6.3	Best care and attention	29
6.4	Customer support for product specifications	29
6.5	Product improvements	30
6.6	Product life cycle	30
6.7	Property rights	30
6.8	General terms and conditions	30
7	Legal notice	31
7.1	Exclusion of liability	31
7.2	Suitability in customer applications	31
7.3	Trademarks	31
7.4	Usage restriction	31
8	License terms	33
8.1	Limited license	33
8.2	Usage and obligations	33
8.3	Ownership	34
8.4	Firmware update(s)	34
8.5	Disclaimer of warranty	34
8.6	Limitation of liability	35
8.7	Applicable law and jurisdiction	35
8.8	Severability clause	35
8.9	Miscellaneous	35

1 Overview

Würth Elektronik Navigation and Satellite Software, WENSS for short, is a simple PC tool to interact with the EV-Boards of the Würth Elektronik eiSos positioning modules using the UART interface. It allows:

- Taking into operation of the EV-board
- Bidirectional communication with the GNSS module
- Evaluation of module capabilities and features
- Getting familiar with module protocols, sentences and commands
- Configuration of the module without knowledge of the protocols
- Parsing of sentences and commands

Experienced users have the opportunity to use WENSS for more advanced configurations. Therefore it allows an easy evaluation of positioning application.

1.1 Supported GNSS modules

The following GNSS modules are supported:

- Elara-I
- Elara-II
- Erinome-I
- Erinome-II

1.2 System requirements

1.2.1 Supported operating systems

The following operating systems are supported:

- Windows 10, 32/64 bit
- Windows 8, 32/64 bit
- Windows 7, 32/64 bit

1.2.2 .NET Framework

Version 4.7.2 or later of the Microsoft .NET framework is required to use WENSS. Install this package if you receive a corresponding error message when starting the program.

1.2.3 Internet connection

WENSS works mostly offline. An internet connection is only required to follow links present in the software, e.g. links to manuals and product sites. Normal operation can be done without internet connection of any sort.

2 Installation

WENSS is provided in the form of a compressed zip file. To use WENSS extract the zip files to a directory of your choice. The new folder will contain the following files:

- WENSS.exe
- Custom_Commands.xml

No further actions are required for installation. However, the serial-to-USB FTDI converter chip (for example, FT232R) on the evaluation platform or USB dongles requires special drivers to be installed for proper operation. To use USB dongles or evaluation boards of Würth Elektronik eiSos wireless connectivity modules, the Virtual COM Port (VCP) drivers have to be installed by following the "Installation Guides" of FTDI found under:

<https://www.ftdichip.com/Drivers/VCP.htm>



It is recommended to restart the PC after installation of the drivers.



WENSS creates folders and writes log files during operation. Please make sure that the directory has the necessary permission.

2.1 Connect the EV-Board

After the FTDI VCP drivers installation the EV-Board can be connected to the PC via USB cable. Please refer to the EV-Board user manual for detailed information.



During the plug-and-play routine of Windows the positioning EV-Board might be detected as a trackball mouse. This leads to the mouse cursor jumping around wildly. This behaviour can be avoided by switching the positioning module on after plug-and-play routine is finished. The routine takes up to 5 seconds after plugging the device in.

3 Deinstallation

WENSS can be uninstalled by simply deleting the directories and files that have been created during operation and installation. WENSS operates only in the folder it was extracted to. No changes are made to the registry.

We recommend to save the log files for usage for analysis at a later time.

4 Operation

4.1 Starting the program

The program can be started by double-clicking the "WENSS.exe" extracted earlier during the installation. Right after start up the navigation view will be shown.

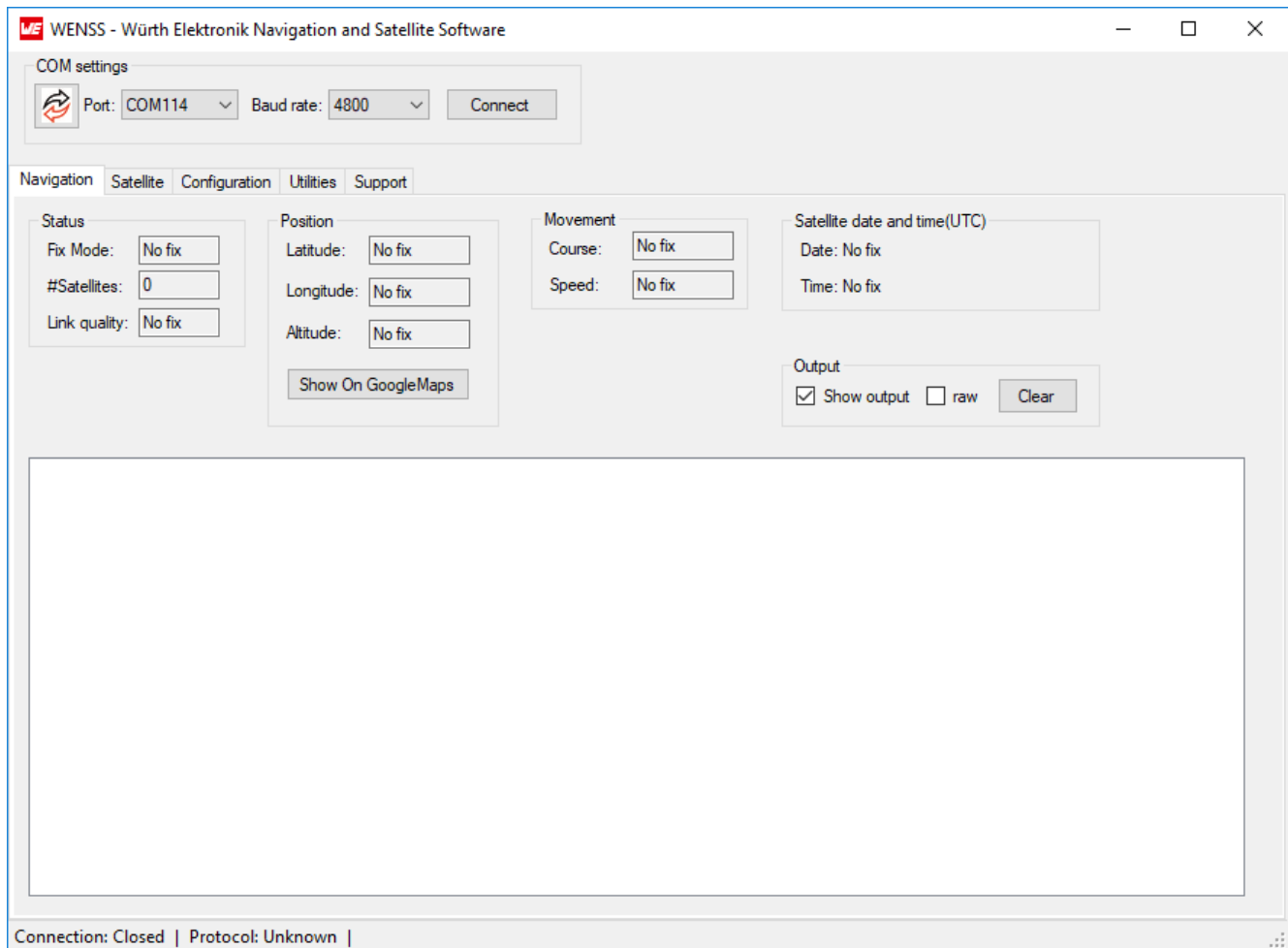


Figure 1: WENSS after start up

4.2 Structure of the GUI

The GUI is structured in a way that the collected information and possible configurations are bundled in different views. The main views are organised in tabs and can be selected by clicking its respective name.

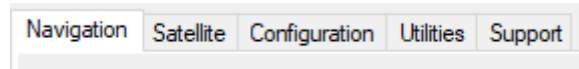


Figure 2: Tabs to select the different views

The available tabs are as follows:

- **Navigation**
Presents and interprets received messages regarding the navigation and allows faster understanding of the information delivered by the module.
For more details refer to chapter 4.5
- **Satellite**
Presents information about the satellites in view and those used for position calculation.
For more details refer to chapter 4.6
- **Configuration**
Allows to send commands to the module and to configure its output and behaviour.
For more details refer to chapter 4.7
- **Utilities**
Provides checksum calculation and time measurements to further evaluate the module.
For more details refer to chapter 4.8
- **Support**
Provides links to the product website, manuals and support.
For more details refer to chapter 4.9

To make it possible to open and close the connection to the module the "COM settings" are visible from every view. Please refer to chapter 4.3 on how to open the communication to the module. The status bar displays the current com port status and used protocol as further explained in chapter 4.4.

4.3 Connect/Disconnect

To open the communication with the module:

1. Refresh com ports by clicking the refresh button to the left.
2. Select the port from the drop-down list.
3. Select the baud rate from the drop-down list.
4. Click the "Connect" button.

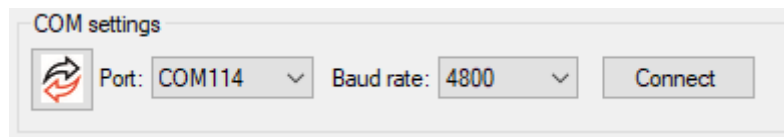


Figure 3: Com settings

If the selected baudrate does not match the configured module baud rate, communication is not possible. The default baud rate of the modules is 4800 Baud. If baud rate setting has been changed in previous module operation, last configured baudrate has to be chosen on the PC-tool.

If connection with the module is successful and the module is in full power state, the message flow is visible in the navigation view, unless all messages have been deactivated. Please refer to chapter 4.5 for details about Navigation view. On first power-up the module starts in hibernate state and can be switched to full power state through the ON/OFF switch or button. Please refer to EV-board manual for detailed information.

After connection, the text of the button will change to "Disconnect". Press this button to close the COM port and stop the communication with the module. If connection with the module is stopped successfully message flow stops in the navigation view. .

4.4 Status bar

At the lower edge of the window a status bar shows information about the connection status and the current protocol used by the module. The status bar is visible independently of the selected tab.

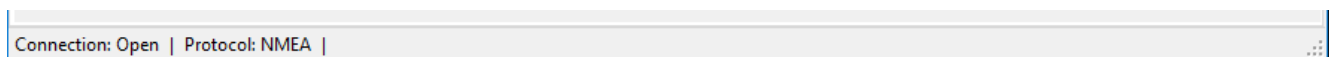


Figure 4: Status bar displaying connection status and used protocol.

Field name	Description	Possible values
Connection	Shows COM port status	<ul style="list-style-type: none">• Closed• Open
Protocol	Current protocol of the module	<ul style="list-style-type: none">• Unknown• NMEA• OSP

Table 1: Description of the status bar

4.5 Navigation view

The navigation view prints the received messages relevant for the navigation and shows the collected information like

- fix status
- position
- velocity
- date and time

The parsed messages allow faster understanding of the information delivered by the module. The raw messages can be used to become familiar with the communication protocols used by the GNSS module.

Message flow visible in this tab matches modules current communication setting (communication protocol, update rate, message rate). Refer to module manual for detailed information.

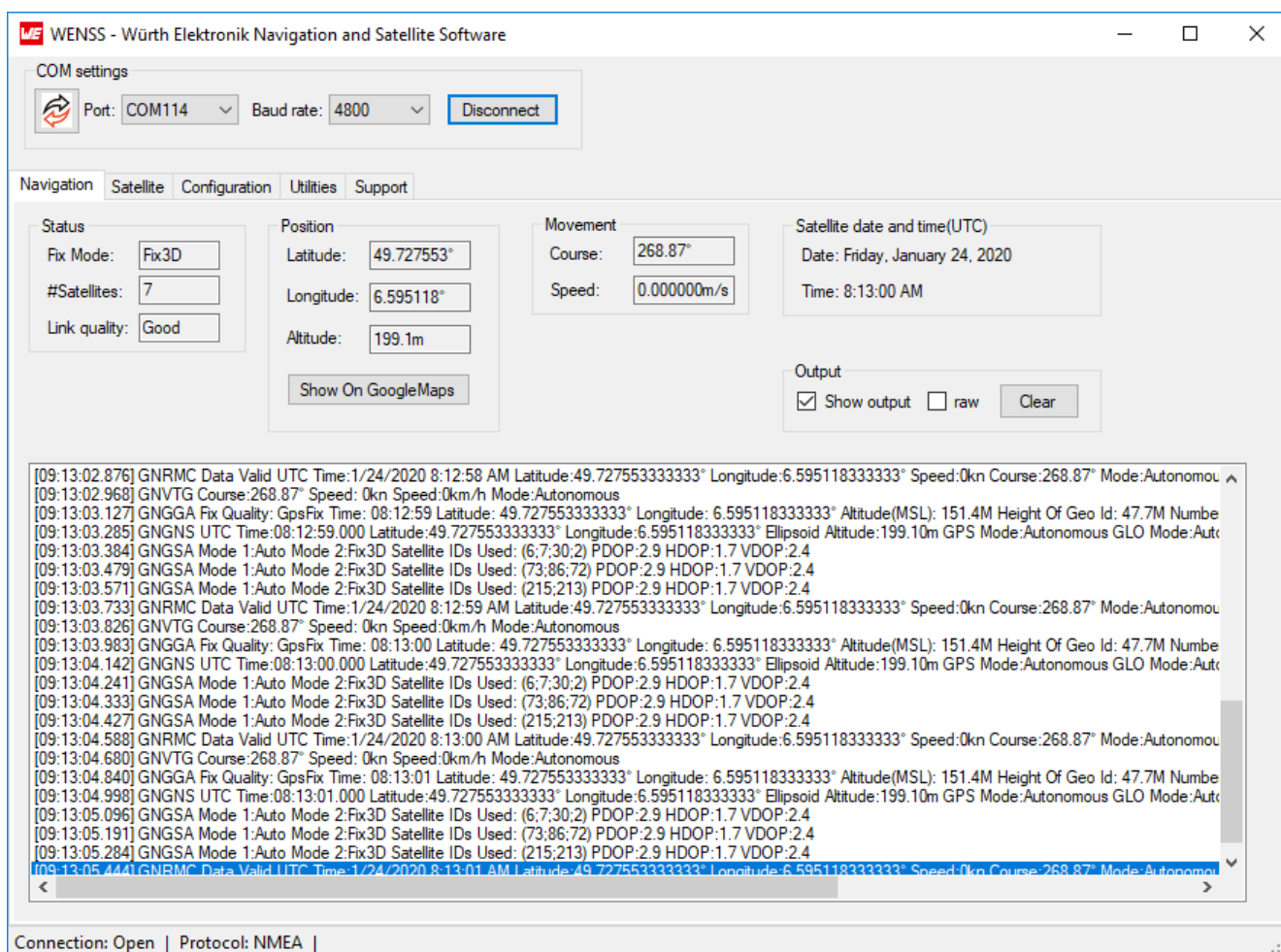


Figure 5: Navigation view when a fix is acquired

4.5.1 Status

Status contains general information about the position fix and the quality of the link with the GNSS satellites. Data is extracted from NMEA message GSA or OSP message MID66 and MID67,1. If these messages are deactivated, this part of the GUI will not be updated any-more.

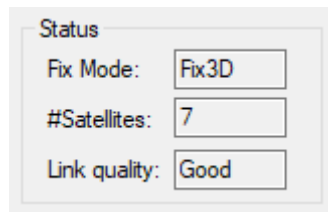


Figure 6: Status group of navigation view

Field name	Description	Possible values
Fix mode	Shows current fix mode	<ul style="list-style-type: none"> • No fix • Fix2D • Fix3D
#Satellites	Number of satellites used for fix	<ul style="list-style-type: none"> • No fix • number ≥ 0
Link quality	Quality of the link with GNSS satellites. Shows dilution of precision (DOP) when hovering over with mouse. Based on the PDOP as stated in brackets to the right.	<ul style="list-style-type: none"> • No fix • Ideal (1) • Excellent (1-2) • Good (2-5) • Moderate (5-10) • Bad (> 10)

Table 2: Description of the status group

4.5.2 Position

Position contains the values describing the position of the receiver. By clicking the button "Show on GoogleMaps" the link is created using the received longitude and latitude and open in the

internet browser. This requires internet connection.

Data is extracted from NMEA messages GGA, GNS, GLL and RMC and OSP messages MID41 and MID67,1. If these messages are deactivated, this part of the GUI will not be updated any-more.

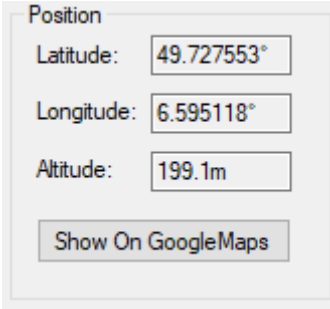


Figure 7: Position group of navigation view

Field name	Description	Possible values
Latitude	Shows current latitude in degree. Negative value southwards, positive value northwards	$(-90)^{\circ}$ to 90°
Longitude	Shows current longitude in degree. Negative value westwards, positive value eastwards	$(-180)^{\circ}$ to 180°
Altitude	Shows current altitude in meter based on WGS-84 ellipsoid	

Table 3: Description of position group

4.5.3 Movement

In the movement group course and speed are shown. This allows to determine the direction and velocity of the receiver. Data is extracted from NMEA messages VTG and RMC and OSP messages MID41 and MID67,1. If these messages are deactivated, this part of the GUI will not be updated any-more.

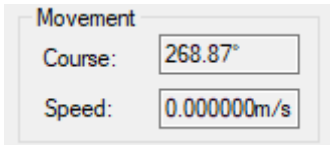


Figure 8: Movement group of navigation view

Field name	Description	Possible values
Course	0° and 360° represent true north	0° to 360°
Speed	Current speed in m/s	

Table 4: Description of the movement group

4.5.4 Date and time

In this area the date and UTC-time are shown. The format of the date is "weekday, month day, year" whereas weekday and month are written out. Time is based on a 12 hour system and AM or PM is given. Data is extracted from NMEA messages ZDA and RMC and OSP messages MID41. If these messages are deactivated, this part of the GUI will not be updated any-more.

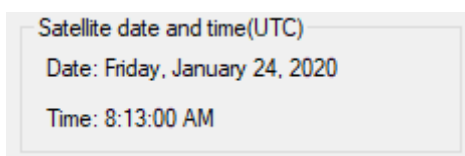


Figure 9: Time and date group of navigation view

4.5.5 Output

The output controls allow to change the display of the received messages. By toggeling the "Show output" checkbox, the output of the messages can be enabled or disabled. Disabling the output of the messages can be helpful when analyzing message history. Messages can be shown just as received by the module

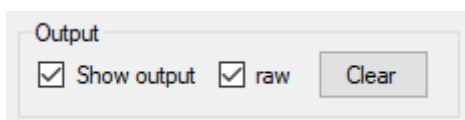


Figure 10: Show messages as received by module

or parsed and interpreted.

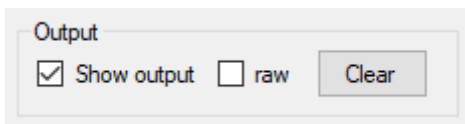


Figure 11: Show messages parsed and interpreted

These control options only change the behaviour of the GUI. The module is not affected by the changes. With the "Clear" button the received messages are cleared in the log field.

4.6 Satellite view

The satellite view shows information about the satellites in view and in use. The information is shown both in a table view and in a sky view. Satellites disappear from the table and view once they are not in sight any-more. Data is extracted from NMEA message GSV and OSP message MID67,1. If these messages are deactivated, this part of the GUI will not be updated any-more.

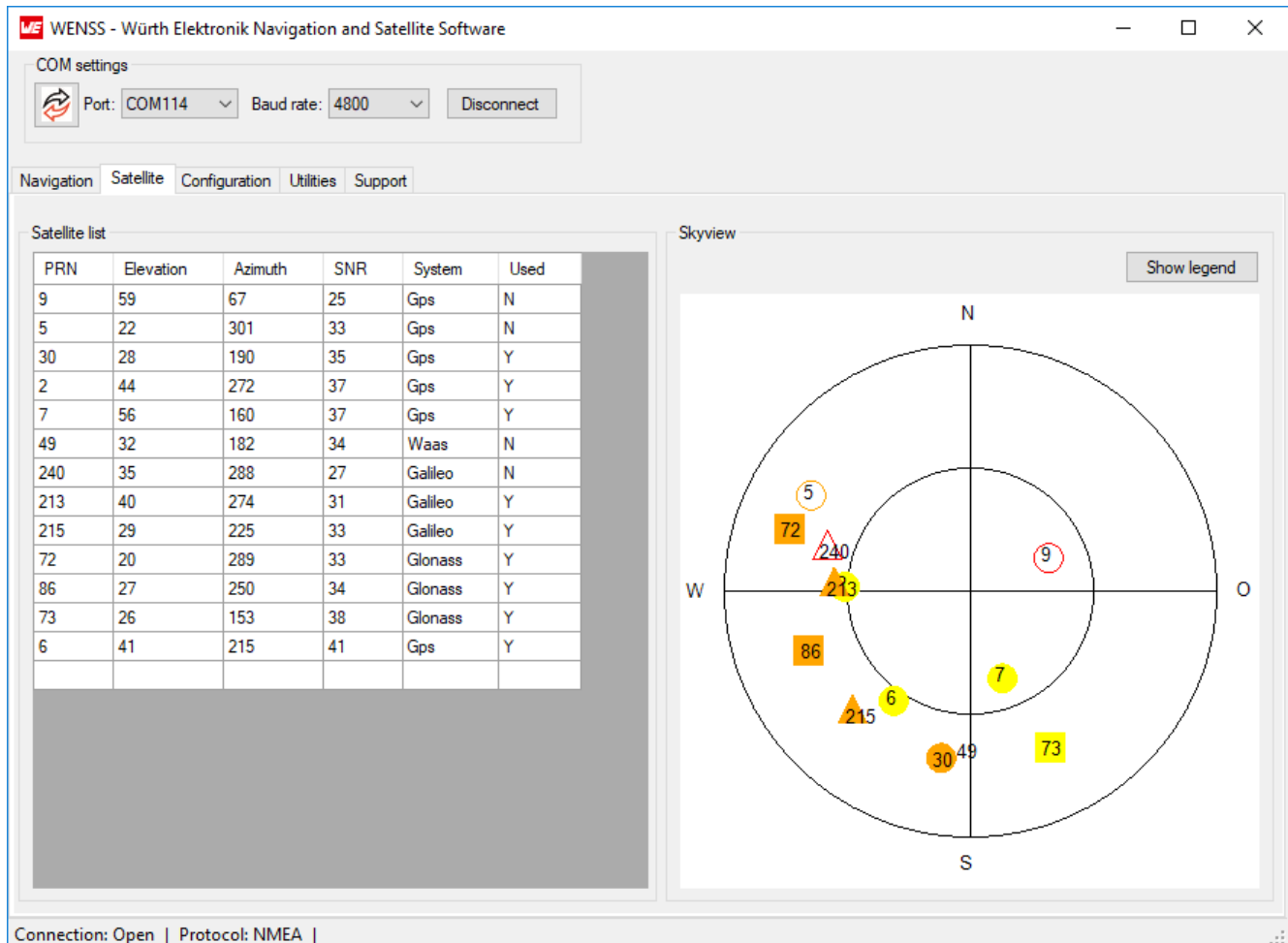


Figure 12: Satellite view when a fix is acquired

4.6.1 Table

The table contains the information about the satellites in readable form. The columns can be sorted by clicking on the header row.

PRN	Elevation	Azimuth	SNR	System	Used
9	59	67	25	Gps	N
5	22	301	33	Gps	N
30	28	190	35	Gps	Y
2	44	272	37	Gps	Y
7	56	160	37	Gps	Y
49	32	182	34	Waas	N
240	35	288	27	Galileo	N
213	40	274	31	Galileo	Y
215	29	225	33	Galileo	Y
72	20	289	33	Glionass	Y
86	27	250	34	Glionass	Y
73	26	153	38	Glionass	Y
6	41	215	41	Gps	Y

Figure 13: Information about satellite in view shown as table

Field name	Description
PRN	Pseudo Random Noise. Unique for every satellite. Is used as ID.
Elevation	The angle above the horizon. An angle of 90° represents the zenith.
Azimuth	The angle between the north vector and the satellites' vector on the horizontal plane.
SNR	Signal-to-noise ratio. Indicator for signal strength. The higher SNR the better the signal.
System	GNSS the satellite belongs to.
Used	Indicates if the satellite is used for the fix. "Y" indicates used for fix.

Table 5: Description of satellite table

4.6.2 Skyview

All modules in view are shown on the sky view. The outer line represents the horizon while the centre represents the zenith.

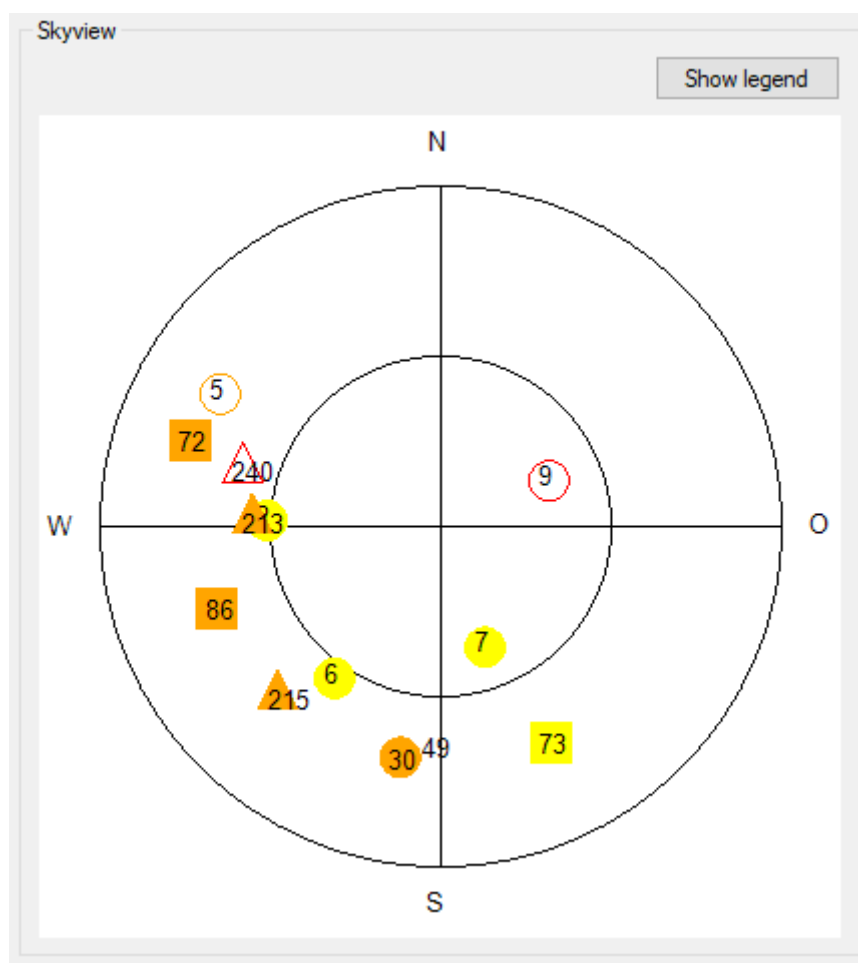


Figure 14: Satellites in view shown as skyview

If a satellite is used for the fix the figure is filled out. Otherwise only the outer lining is drawn. The PRN of the satellite is written within the symbol for identification. The colour indicates the signal strength. The representation for the satellites is as follows:

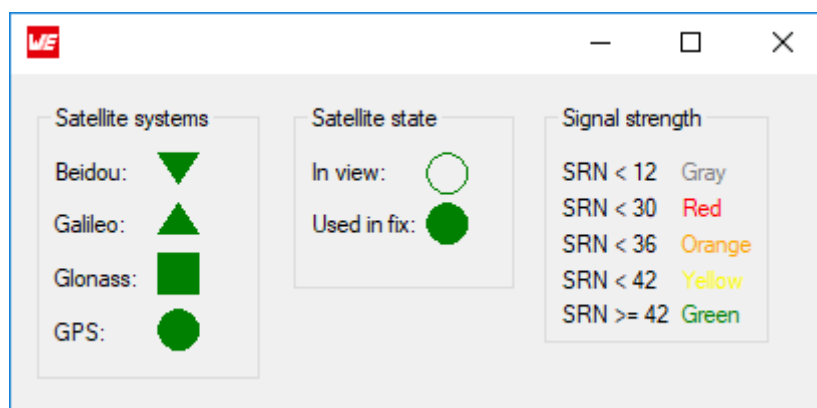


Figure 15: Legend of satellite representation

4.7 Configuration view

The configuration view allows to send commands to the module and to configure its output and behaviour. WENSS automatically allows only those actions which are available in the current protocol. In addition the input is only enabled if a connection is open and a valid protocol is detected.

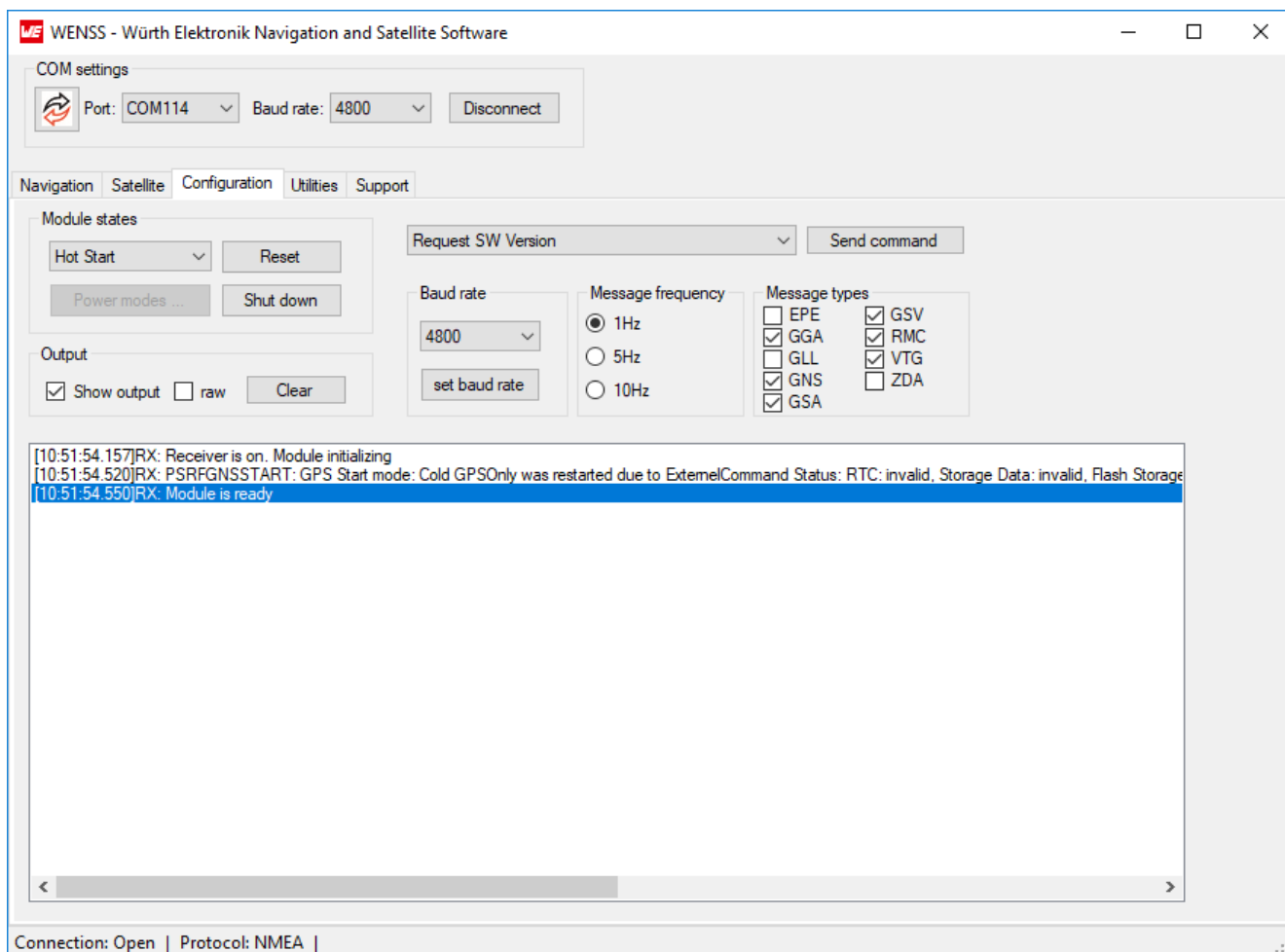


Figure 16: Configuration view to adjust the modul to one's needs

4.7.1 Module states

The module can be set to various states. These include reset, shutdown and predefined power modes.

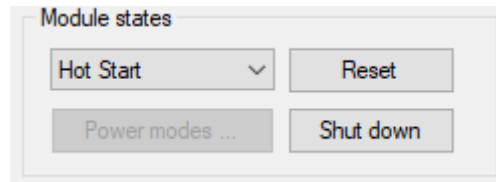


Figure 17: Module states group of configuration view

4.7.1.1 Reset

The dropdown allows to select the type of reset to perform. By clicking the button "Reset" the module will be reset accordingly.

Field name	Description
Hot Start	Use initialization data and begin in start mode. RAM is not cleared.
Warm Start	Ephemeris data is cleared. Rest of data remains in RAM.
Cold Start	Position, time and ephemeris are cleared. Rest of data remains in RAM.
Factory Reset	Internal RAM is cleared completely.

Table 6: Description of resets

4.7.1.2 Shutdown



This command has no effect for the Elara-I and Elara-II modules.

This command has the same effect as the on/off pin of the hardware. The module will be powered off but data in RAM will be retained. The module can only be powered on with a hardware reset or by ON/OFF pin.

4.7.1.3 Power modes



The configuration of power modes is only available when using OSP.

Using the low power modes the module automatically switches between full power and hibernate mode according to the selected parameters. By clicking on the "Reset"-button a new window opens to further configure the power mode. The available power modes are:

- Full power mode
- SmartGNSS
- Push-To-Fix
- Trickle mode

For information about the power modes and the parameters consult the manual of the specific module.

4.7.2 Custom commands

The available commands for the current protocol are shown in a drop down menu and can be selected. The selected command is sent by clicking "Send command". The drop-down list of commands corresponds to the list contained in the XML file supplied with WENSS.

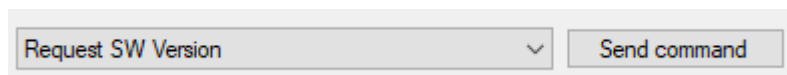


Figure 18: custom commands of configuration view

The NMEA protocol has no acknowledge response, so there is no feedback whether the command was successful or not. OSP on the other hand responds with an ACK or NACK command.

4.7.2.1 Add custom command

The XML file containing custom commands can be opened and edited by the user with an editor of choice. The commands are divided into NMEA and OSP commands. Both contain a "name" and a "data" property whereas "name" is shown in the dropdown menu and "data" is sent to the module. To apply the new XML file WENSS has to be restarted.

```
<NMEACommands>
  <NMEACommand name="Request SW Version" data="$PSRF125*21" />
  ....
  <NMEACommand name="Custom command name" data="Your NMEA command" />
</NMEACommands>
<OSPCommands>
  <OSPCommand name="Request SW Version" data="A0A2000284000084B0B3" />
  ....
  <OSPCommand name="Custom command name" data="Your OSP command" />
</OSPCommands>
```

Code 1: Example of Custom_Commands.xml

4.7.3 Baud rate

The baud rate of the module can be set by selecting a baud rate from the drop-down list and clicking the "set baud rate"-button.



Figure 19: Baud rate group of configuration view

When using OSP protocol the tool will switch the baud rate of the COM port automatically once the acknowledgement is received. When using NMEA no acknowledgement is sent by the module. The baud rate of the port has to be changed manually by disconnecting and connecting again with the new baud rate as described in chapter 4.3.

4.7.4 Update rate



If update rate or message types are configured in a way that the resulting message rate is higher than the default configuration it is advised to increase the baud rate. Otherwise messages might get lost and request are performed with a delay.

Update rate configuration effects all enabled NMEA and OSP messages. It is advised to increase the baud rate prior to increasing the update rate. The command to change the update rate is sent when the selection of the radio buttons changes. There will be no acknowledgement.

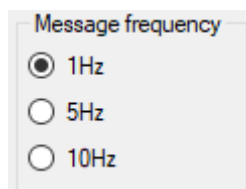


Figure 20: Update rate group of configuration view



Selecting an update rate of 10Hz has no effect on Elara-I and Elara-II.

4.7.5 Message types

The configuration of message types is only available using the NMEA protocol.

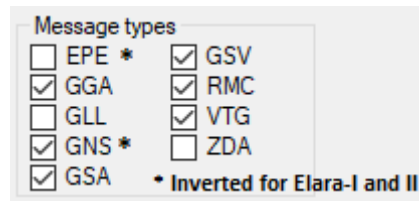


Figure 21: Message types group of configuration view

The standard message types of the NMEA protocol can be enabled and disabled by checking or unchecking the respective box. There will be no acknowledgement.

Message type	Description
EPE	UTC Time and expected position error
GGA	Time, position and fix type data
GLL	Latitude, longitude, UTC time of position fix and status
GNS	Position data
GSA	Time, position and fix type date
GSV	Satellite information and DOP values
RMC	Time, date, position, course and speed data
VTG	Course and speed data
ZDA	PPS timing message

Table 7: Description of message types



When using the Elara family EPE and GNS are inverted as the command is used differently. The software does not make a difference between the different modules yet. To enable or disable EPE please use the checkbox for GNS and vice versa.

4.7.6 Output

The output controls allow to change the display of the received messages. By toggeling the "Show output" checkbox, the output of the messages can be enabled or disabled. Disabling the output of the messages can be helpful when analyzing message history.

Messages can be shown just as received by the module

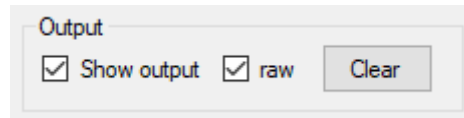


Figure 22: Show messages as received by module

or parsed and interpreted.

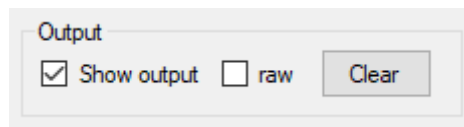


Figure 23: Show messages parsed and interpreted

These control options only change the behaviour of the GUI. The module is not affected by the changes. With the "Clear" button the received messages are cleared in the log field.

4.8 Utilities view

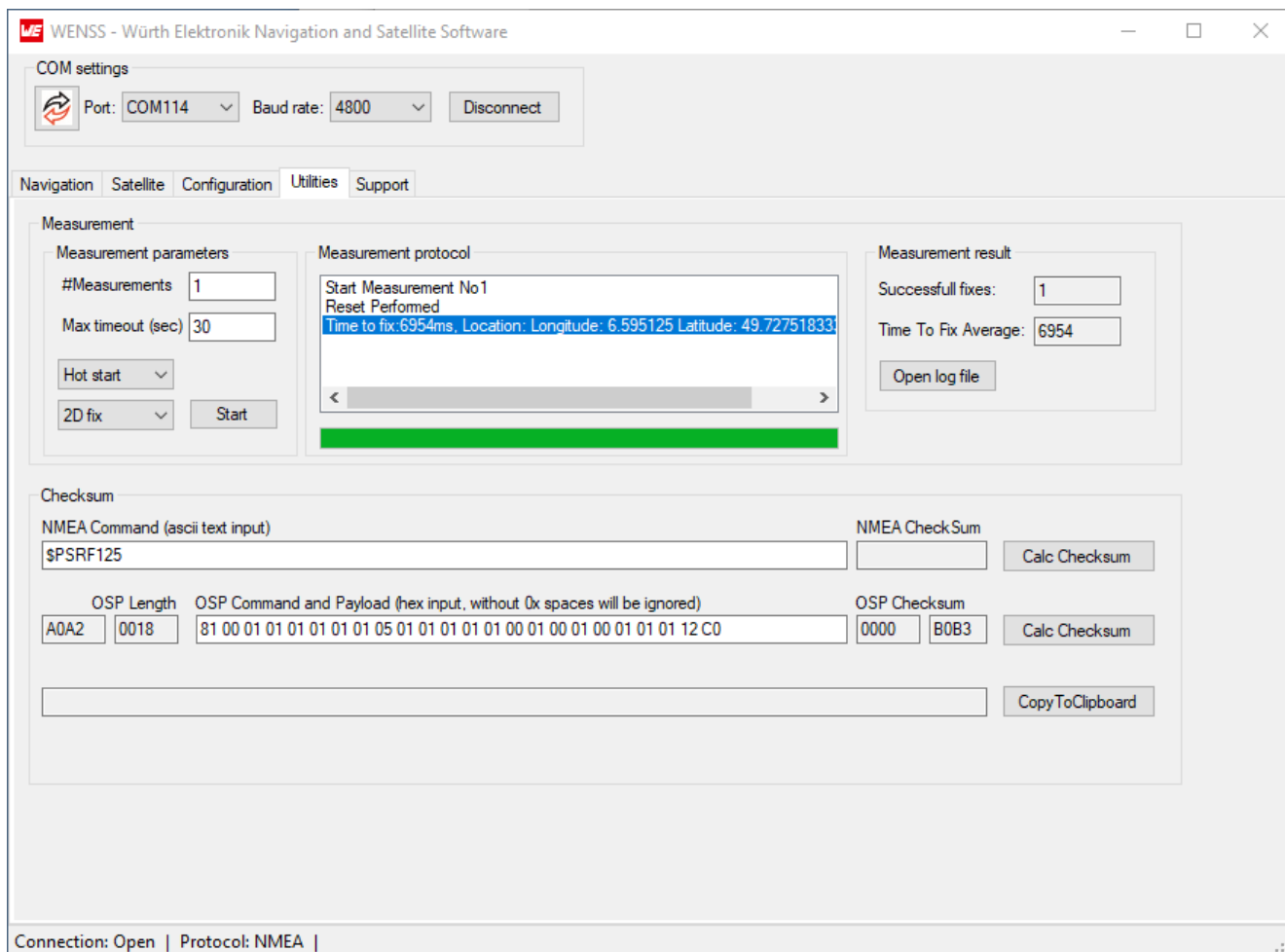


Figure 24: Utility view with various tools

4.8.1 Time-to-First-Fix measurement

The Time-To-First-Fix can be measured using WENSS and supports the user in a basic evaluation of receiver acquisition time after cold, warm, or hot start. When starting the measurement a reset command is sent to the module. Once the startup message is received after the reset the time until a fix is acquired is measured and logged. If the reset was not successful the program will proceed with the next measurement. This procedure is automatically repeated until the specified amount of measurements are performed. A protocol shows the current steps, which are additionally logged into a file.

The measurement can be started by clicking the "Start" button. The text of the button will switch to "Abort" while the measurement is running. One can abort the entire measurement by clicking on the "Abort" button.

For best results the following preparations should be done before starting the measurement.

- Choose a higher baudrate of 921600.

- Disable all message types except for GSA and GGA (Tab configuration)

The configurable input for the measurement is as follows:

- Measurement: Number of total measurements.
- Max timeout (sec): Maximum time to wait between reset and fix.
- Drop-Down 1: What kind of reset should be performed.
- Drop-Down 2: Fix to be waited for (2D-Fix or 3D-Fix) to consider the measurement complete.

The output of the measurements is as follows:

- Successfull fixes: Amount of successfull measurements where a fix was acquired.
- Time To Fix Average: Average time of all successfull measurements in milliseconds.
- Measurement protocol: Output information during the measurements.
- Log file containing the timings and location of acquired fix. Use Button "Open log file" to show the log file in an editor.

4.8.2 Checksum calculation

This part of the tool is meant to support the user in building up NMEA and OSP commands. In particular, the checksum of NMEA or OSP messages can be calculated using WENSS. The input for NMEA messages is the entire command until the checksum seperator "*". For OSP messages only the data part has to be entered. The length will also be adapted when calculating the checksum. By clicking the "Calc Checksum" button next to the input the respective command including the checksum will be output below. The entire command can be copied to the clipboard using the button "CopyToClipboard". To add the built command to the selection window of the configuration view, copy it into the XML file (see section 4.7.2).

4.9 Support

In the last tab contains information about the software and links to further information about the modules like:

- *Product site*
- *Manual of the supported modules*
- *Support*

We appreciate any feedback about our software tool WENSS. Please use to link below to sent an email with your improvement, ideas or general feedback: WCS@we-online.com

4.10 Log file

NMEA and OSP messages are logged according to the current protocol, update rate and message rates. Start and end of the log file correspond to the start and end of the communication with the module (Connect button, see section ...). Log files can be used to analyze message history and evaluate module behaviour. The navigation messages will be logged as received by the module thus not parsed.

The log files can be found in the "logFiles" folder next to the executable of WENSS.

5 Software history

Version 1.0.0.0 "Release"

- First released version of the tool.

Version 1.1.0.0 "Internal Release"

- Only used internally.

Version 1.2.0.0 "Release"

- Fix bug where UTC date and time was not shown when using OSP even after fix was acquired.
- Fix bug where COM port was not opened correctly in some cases
- Fixed typo in satellite view

Version 1.3.0.0 "Release"

- Satellites in view were only shown once a fix was acquired. Satellites in view are now always shown, even without a fix.

Version 1.4.0.0 "Release"

- Fix links to website
- Bugfix in parsing of message MID2
- Bugfix in parsing of message MID67,1
- Add possibility to switch between MSL and WGS84 altitude

6 Important notes

The following conditions apply to all goods within the wireless connectivity product range of Würth Elektronik eiSos GmbH & Co. KG:

6.1 General customer responsibility

Some goods within the product range of Würth Elektronik eiSos GmbH & Co. KG contain statements regarding general suitability for certain application areas. These statements about suitability are based on our knowledge and experience of typical requirements concerning the areas, serve as general guidance and cannot be estimated as binding statements about the suitability for a customer application. The responsibility for the applicability and use in a particular customer design is always solely within the authority of the customer. Due to this fact, it is up to the customer to evaluate, where appropriate to investigate and to decide whether the device with the specific product characteristics described in the product specification is valid and suitable for the respective customer application or not. Accordingly, the customer is cautioned to verify that the documentation is current before placing orders.

6.2 Customer responsibility related to specific, in particular safety-relevant applications

It has to be clearly pointed out that the possibility of a malfunction of electronic components or failure before the end of the usual lifetime cannot be completely eliminated in the current state of the art, even if the products are operated within the range of the specifications. The same statement is valid for all software sourcecode and firmware parts contained in or used with or for products in the wireless connectivity and sensor product range of Würth Elektronik eiSos GmbH & Co. KG. In certain customer applications requiring a high level of safety and especially in customer applications in which the malfunction or failure of an electronic component could endanger human life or health, it must be ensured by most advanced technological aid of suitable design of the customer application that no injury or damage is caused to third parties in the event of malfunction or failure of an electronic component.

6.3 Best care and attention

Any product-specific data sheets, manuals, application notes, PCN's, warnings and cautions must be strictly observed in the most recent versions and matching to the products firmware revisions. This documents can be downloaded from the product specific sections on the wireless connectivity homepage.

6.4 Customer support for product specifications

Some products within the product range may contain substances, which are subject to restrictions in certain jurisdictions in order to serve specific technical requirements. Necessary information is available on request. In this case, the field sales engineer or the internal sales person in charge should be contacted who will be happy to support in this matter.

6.5 Product improvements

Due to constant product improvement, product specifications may change from time to time. As a standard reporting procedure of the Product Change Notification (PCN) according to the JEDEC-Standard, we inform about major changes. In case of further queries regarding the PCN, the field sales engineer, the internal sales person or the technical support team in charge should be contacted. The basic responsibility of the customer as per section 6.1 and 6.2 remains unaffected. All wireless connectivity module driver software "wireless connectivity SDK" and its source codes as well as all PC software tools are not subject to the Product Change Notification information process.

6.6 Product life cycle

Due to technical progress and economical evaluation we also reserve the right to discontinue production and delivery of products. As a standard reporting procedure of the Product Termination Notification (PTN) according to the JEDEC-Standard we will inform at an early stage about inevitable product discontinuance. According to this, we cannot ensure that all products within our product range will always be available. Therefore, it needs to be verified with the field sales engineer or the internal sales person in charge about the current product availability expectancy before or when the product for application design-in disposal is considered. The approach named above does not apply in the case of individual agreements deviating from the foregoing for customer-specific products.

6.7 Property rights

All the rights for contractual products produced by Würth Elektronik eiSos GmbH & Co. KG on the basis of ideas, development contracts as well as models or templates that are subject to copyright, patent or commercial protection supplied to the customer will remain with Würth Elektronik eiSos GmbH & Co. KG. Würth Elektronik eiSos GmbH & Co. KG does not warrant or represent that any license, either expressed or implied, is granted under any patent right, copyright, mask work right, or other intellectual property right relating to any combination, application, or process in which Würth Elektronik eiSos GmbH & Co. KG components or services are used.

6.8 General terms and conditions

Unless otherwise agreed in individual contracts, all orders are subject to the current version of the "General Terms and Conditions of Würth Elektronik eiSos Group", last version available at www.we-online.com.

7 Legal notice

7.1 Exclusion of liability

Würth Elektronik eiSos GmbH & Co. KG considers the information in this document to be correct at the time of publication. However, Würth Elektronik eiSos GmbH & Co. KG reserves the right to modify the information such as technical specifications or functions of its products or discontinue the production of these products or the support of one of these products without any written announcement or notification to customers. The customer must make sure that the information used corresponds to the latest published information. Würth Elektronik eiSos GmbH & Co. KG does not assume any liability for the use of its products. Würth Elektronik eiSos GmbH & Co. KG does not grant licenses for its patent rights or for any other of its intellectual property rights or third-party rights.

Notwithstanding anything above, Würth Elektronik eiSos GmbH & Co. KG makes no representations and/or warranties of any kind for the provided information related to their accuracy, correctness, completeness, usage of the products and/or usability for customer applications. Information published by Würth Elektronik eiSos GmbH & Co. KG regarding third-party products or services does not constitute a license to use such products or services or a warranty or endorsement thereof.

7.2 Suitability in customer applications

The customer bears the responsibility for compliance of systems or units, in which Würth Elektronik eiSos GmbH & Co. KG products are integrated, with applicable legal regulations. Customer acknowledges and agrees that it is solely responsible for compliance with all legal, regulatory and safety-related requirements concerning its products, and any use of Würth Elektronik eiSos GmbH & Co. KG components in its applications, notwithstanding any applications-related information or support that may be provided by Würth Elektronik eiSos GmbH & Co. KG. Customer represents and agrees that it has all the necessary expertise to create and implement safeguards which anticipate dangerous consequences of failures, monitor failures and their consequences lessen the likelihood of failures that might cause harm and take appropriate remedial actions. The customer will fully indemnify Würth Elektronik eiSos GmbH & Co. KG and its representatives against any damages arising out of the use of any Würth Elektronik eiSos GmbH & Co. KG components in safety-critical applications.

7.3 Trademarks

AMBER wireless is a registered trademark of Würth Elektronik eiSos GmbH & Co. KG. All other trademarks, registered trademarks, and product names are the exclusive property of the respective owners.

7.4 Usage restriction

Würth Elektronik eiSos GmbH & Co. KG products have been designed and developed for usage in general electronic equipment only. This product is not authorized for use in equipment

where a higher safety standard and reliability standard is especially required or where a failure of the product is reasonably expected to cause severe personal injury or death, unless the parties have executed an agreement specifically governing such use. Moreover, Würth Elektronik eiSos GmbH & Co. KG products are neither designed nor intended for use in areas such as military, aerospace, aviation, nuclear control, submarine, transportation (automotive control, train control, ship control), transportation signal, disaster prevention, medical, public information network etc. Würth Elektronik eiSos GmbH & Co. KG must be informed about the intent of such usage before the design-in stage. In addition, sufficient reliability evaluation checks for safety must be performed on every electronic component, which is used in electrical circuits that require high safety and reliability function or performance. By using Würth Elektronik eiSos GmbH & Co. KG products, the customer agrees to these terms and conditions.

8 License terms

These License terms will take effect upon the purchase and usage of the Würth Elektronik eiSos GmbH & Co. KG wireless connectivity products. You hereby agree that these license terms are applicable to the product and the incorporated software, firmware and source codes (collectively, "Software") made available by Würth Elektronik eiSos in any form, including but not limited to binary, executable or source code form.

The software included in any Würth Elektronik eiSos wireless connectivity product is purchased to you on the condition that you accept the terms and conditions of these license terms. You agree to comply with all provisions under these license terms.

8.1 Limited license

Würth Elektronik eiSos hereby grants you a limited, non-exclusive, non-transferable and royalty-free license to use the software and under the conditions that will be set forth in these license terms. You are free to use the provided software only in connection with one of the products from Würth Elektronik eiSos to the extent described in these license terms. You are entitled to change or alter the source code for the sole purpose of creating an application embedding the Würth Elektronik eiSos wireless connectivity product. The transfer of the source code to third parties is allowed to the sole extent that the source code is used by such third parties in connection with our product or another hardware provided by Würth Elektronik eiSos under strict adherence of these license terms. Würth Elektronik eiSos will not assume any liability for the usage of the incorporated software and the source code. You are not entitled to transfer the source code in any form to third parties without prior written consent of Würth Elektronik eiSos.

You are not allowed to reproduce, translate, reverse engineer, decompile, disassemble or create derivative works of the incorporated software and the source code in whole or in part. No more extensive rights to use and exploit the products are granted to you.

8.2 Usage and obligations

The responsibility for the applicability and use of the Würth Elektronik eiSos wireless connectivity product with the incorporated firmware in a particular customer design is always solely within the authority of the customer. Due to this fact, it is up to you to evaluate and investigate, where appropriate, and to decide whether the device with the specific product characteristics described in the product specification is valid and suitable for your respective application or not.

You are responsible for using the Würth Elektronik eiSos wireless connectivity product with the incorporated firmware in compliance with all applicable product liability and product safety laws. You acknowledge to minimize the risk of loss and harm to individuals and bear the risk for failure leading to personal injury or death due to your usage of the product.

Würth Elektronik eiSos' products with the incorporated firmware are not authorized for use in safety-critical applications, or where a failure of the product is reasonably expected to cause severe personal injury or death. Moreover, Würth Elektronik eiSos' products with the incorporated firmware are neither designed nor intended for use in areas such as military, aerospace, aviation, nuclear control, submarine, transportation (automotive control, train control, ship control), transportation signal, disaster prevention, medical, public information network etc. You

shall inform Würth Elektronik eiSos about the intent of such usage before design-in stage. In certain customer applications requiring a very high level of safety and in which the malfunction or failure of an electronic component could endanger human life or health, you must ensure to have all necessary expertise in the safety and regulatory ramifications of your applications. You acknowledge and agree that you are solely responsible for all legal, regulatory and safety-related requirements concerning your products and any use of Würth Elektronik eiSos' products with the incorporated firmware in such safety-critical applications, notwithstanding any applications-related information or support that may be provided by Würth Elektronik eiSos. **YOU SHALL INDEMNIFY WÜRTH ELEKTRONIK EISOS AGAINST ANY DAMAGES ARISING OUT OF THE USE OF WÜRTH ELEKTRONIK EISOS' PRODUCTS WITH THE INCORPORATED FIRMWARE IN SUCH SAFETY-CRITICAL APPLICATIONS.**

8.3 Ownership

The incorporated firmware created by Würth Elektronik eiSos is and will remain the exclusive property of Würth Elektronik eiSos.

8.4 Firmware update(s)

You have the opportunity to request the current and actual firmware for a bought wireless connectivity product within the time of warranty. However, Würth Elektronik eiSos has no obligation to update a modules firmware in their production facilities, but can offer this as a service on request. The upload of firmware updates falls within your responsibility, e.g. via ACC or another software for firmware updates. Firmware updates will not be communicated automatically. It is within your responsibility to check the current version of a firmware in the latest version of the product manual on our website. The revision table in the product manual provides all necessary information about firmware updates. There is no right to be provided with binary files, so called "firmware images", those could be flashed through JTAG, SWD, Spi-Bi-Wire, SPI or similar interfaces.

8.5 Disclaimer of warranty

THE FIRMWARE IS PROVIDED "AS IS". YOU ACKNOWLEDGE THAT WÜRTH ELEKTRONIK EISOS MAKES NO REPRESENTATIONS AND WARRANTIES OF ANY KIND RELATED TO, BUT NOT LIMITED TO THE NON-INFRINGEMENT OF THIRD PARTIES' INTELLECTUAL PROPERTY RIGHTS OR THE MERCHANTABILITY OR FITNESS FOR YOUR INTENDED PURPOSE OR USAGE. WÜRTH ELEKTRONIK EISOS DOES NOT WARRANT OR REPRESENT THAT ANY LICENSE, EITHER EXPRESS OR IMPLIED, IS GRANTED UNDER ANY PATENT RIGHT, COPYRIGHT, MASK WORK RIGHT, OR OTHER INTELLECTUAL PROPERTY RIGHT RELATING TO ANY COMBINATION, MACHINE, OR PROCESS IN WHICH THE WÜRTH ELEKTRONIK EISOS' PRODUCT WITH THE INCORPORATED FIRMWARE IS USED. INFORMATION PUBLISHED BY WÜRTH ELEKTRONIK EISOS REGARDING THIRD-PARTY PRODUCTS OR SERVICES DOES NOT CONSTITUTE A LICENSE FROM WÜRTH ELEKTRONIK EISOS TO USE SUCH PRODUCTS OR SERVICES OR A WARRANTY OR ENDORSEMENT THEREOF.

8.6 Limitation of liability

Any liability not expressly provided by Würth Elektronik eiSos shall be disclaimed.

You agree to hold us harmless from any third-party claims related to your usage of the Würth Elektronik eiSos' products with the incorporated firmware, software and source code. Würth Elektronik eiSos disclaims any liability for any alteration, development created by you or your customers as well as for any combination with other products.

8.7 Applicable law and jurisdiction

Applicable law to these license terms shall be the laws of the Federal Republic of Germany. Any dispute, claim or controversy arising out of or relating to these license terms shall be resolved and finally settled by the court competent for the location of Würth Elektronik eiSos registered office.

8.8 Severability clause

If a provision of these license terms is or becomes invalid, unenforceable or null and void, this shall not affect the remaining provisions of the terms. The parties shall replace any such provisions with new valid provisions that most closely approximate the purpose of the terms.

8.9 Miscellaneous

Würth Elektronik eiSos reserves the right at any time to change this terms at its own discretion. It is your responsibility to check at Würth Elektronik eiSos homepage for any updates. Your continued usage of the products will be deemed as the acceptance of the change.

We recommend you to be updated about the status of new firmware and software, which is available on our website or in our data sheet and manual, and to implement new software in your device where appropriate.

By ordering a product, you accept these license terms in all terms.

List of Figures

1	WENSS after start up	8
2	Tabs to select the different views	9
3	Com settings	10
4	Status bar displaying connection status and used protocol.	10
5	Navigation view when a fix is acquired	12
6	Status group of navigation view	13
7	Position group of navigation view	14
8	Movement group of navigation view	14
9	Time and date group of navigation view	15
10	Show messages as received by module	15
11	Show messages parsed and interpreted	15
12	Satellite view when a fix is acquired	16
13	Information about satellite in view shown as table	17
14	Satellites in view shown as skyview	18
15	Legend of satellite representation	18
16	Configuration view to adjust the modul to one's needs	19
17	Module states group of configuration view	20
18	custom commands of configuration view	21
19	Baud rate group of configuration view	22
20	Update rate group of configuration view	22
21	Message types group of configuration view	23
22	Show messages as received by module	24
23	Show messages parsed and interpreted	24
24	Utility view with various tools	25

List of Tables

1	Description of the status bar	11
2	Description of the status group	13
3	Description of position group	14
4	Description of the movement group	15
5	Description of satellite table	17
6	Description of resets	20
7	Description of message types	23

**Contact**

Würth Elektronik eiSos GmbH & Co. KG
Division Wireless Connectivity & Sensors

Max-Eyth-Straße 1
74638 Waldenburg
Germany

Tel.: +49 651 99355-0
Fax.: +49 651 99355-69
www.we-online.com/wireless-connectivity

WÜRTH ELEKTRONIK MORE THAN YOU EXPECT