



USER MANUAL

AT COMMAND TOOL FOR CALYPSO
WI-FI MODULE

VERSION 1.3

MAY 22, 2023

WÜRTH ELEKTRONIK MORE THAN YOU EXPECT

Revision history

Manual version	SW version	Notes	Date
1.0	1.1.0	First release	April 2019
1.1	1.2.0	Updated software history	July 2019
1.2	1.3.0	Updated software history and images	January 2022
1.3	1.3.0	New corporate design	May 2023

Contents

1	Overview	3
1.1	Supported devices	3
1.2	System requirements	3
1.2.1	Supported operating systems	3
1.2.2	.NET Framework	3
1.2.3	Internet connection	3
1.3	Installation	4
1.4	Connecting the Calypso evaluation board to the computer	4
2	Operation	5
2.1	Starting the program	5
2.2	COM Interface	5
2.3	Function tabs	6
2.4	Message Window	7
2.5	AT command buttons	7
2.6	Sending Manual commands	8
3	Software history	10
4	Important notes	11
4.1	General customer responsibility	11
4.2	Customer responsibility related to specific, in particular safety-relevant applications	11
4.3	Best care and attention	11
4.4	Customer support for product specifications	11
4.5	Product improvements	12
4.6	Product life cycle	12
4.7	Property rights	12
4.8	General terms and conditions	12
5	Legal notice	13
5.1	Exclusion of liability	13
5.2	Suitability in customer applications	13
5.3	Trademarks	13
5.4	Usage restriction	13
6	License terms	15
6.1	Limited license	15
6.2	Usage and obligations	15
6.3	Ownership	16
6.4	Firmware update(s)	16
6.5	Disclaimer of warranty	16
6.6	Limitation of liability	17
6.7	Applicable law and jurisdiction	17
6.8	Severability clause	17
6.9	Miscellaneous	17

1 Overview

The AT command tool is a simple PC software that enables complete control of the Calypso Wi-Fi module via the AT Command interface. This tool offers an intuitive graphical user interface that enables the user to interact with the Calypso and understand the syntax and semantics of the AT command interface.

The AT command tool works out-of-the-box with the Calypso evaluation board. This tool along with the Calypso evaluation board allows quick prototyping and testing of various features of the Calypso Wi-Fi module.



AT command tool is an evaluation tool that is intended for development purposes only.

1.1 Supported devices

The AT command tool establishes communication with the Calypso Wi-Fi module by opening a virtual COM port. The Calypso Evaluation board has a serial-to-USB converter on-board that enables such a connection via USB port to the PC. The AT command tool has been developed and tested for the Calypso evaluation board. Further, the tool implements the complete set of commands supported by the Calypso Wi-Fi module.

1.2 System requirements

This tool is intended to run on a PC with the following requirements:

1.2.1 Supported operating systems

The following operating systems are supported:

- Windows 10, 32/64 bit
- Windows 8, 32/64 bit
- Windows 7, 32/64 bit

1.2.2 .NET Framework

Version 4.5.2 or later of the Microsoft .NET framework is required to use AT command tool. Install this package if you receive a corresponding error message when starting the program.

1.2.3 Internet connection

The tool itself works completely offline without the need for any sort of internet connection. However, based on the use case, the corresponding Wi-Fi infrastructure has to be made available in order to test the functions of Calypso Wi-Fi module.

1.3 Installation

The AT command tool itself is an executable and does not require installation. However, the serial-to-USB FTDI converter chip (**FT232RL**) on the Calypso evaluation board requires special drivers to be installed for proper operation.

Detailed install instructions can be found online in the FTDI knowledge base.

To use the AT command tool, the Virtual COM Port (VCP) drivers has to be installed by following the installation guides of FTDI found under: <https://www.ftdichip.com/Drivers/VCP.htm>



It is recommended to restart the PC after installation of drivers.

1.4 Connecting the Calypso evaluation board to the computer

The Calypso evaluation board has to be connected to the PC using the USB cable provided with the kit. On successful installation of the drivers (see section 1.3), the evaluation board appears as a USB serial port in the device manager as shown in the figure 1.

It is not recommended to use USB extension cords in the connection towards the Calypso EV board.



Figure 1: Virtual COM port.

2 Operation

This chapter provides operational instructions for the AT command tool.

2.1 Starting the program

Double-click "AT_Commander.exe" to start the program.

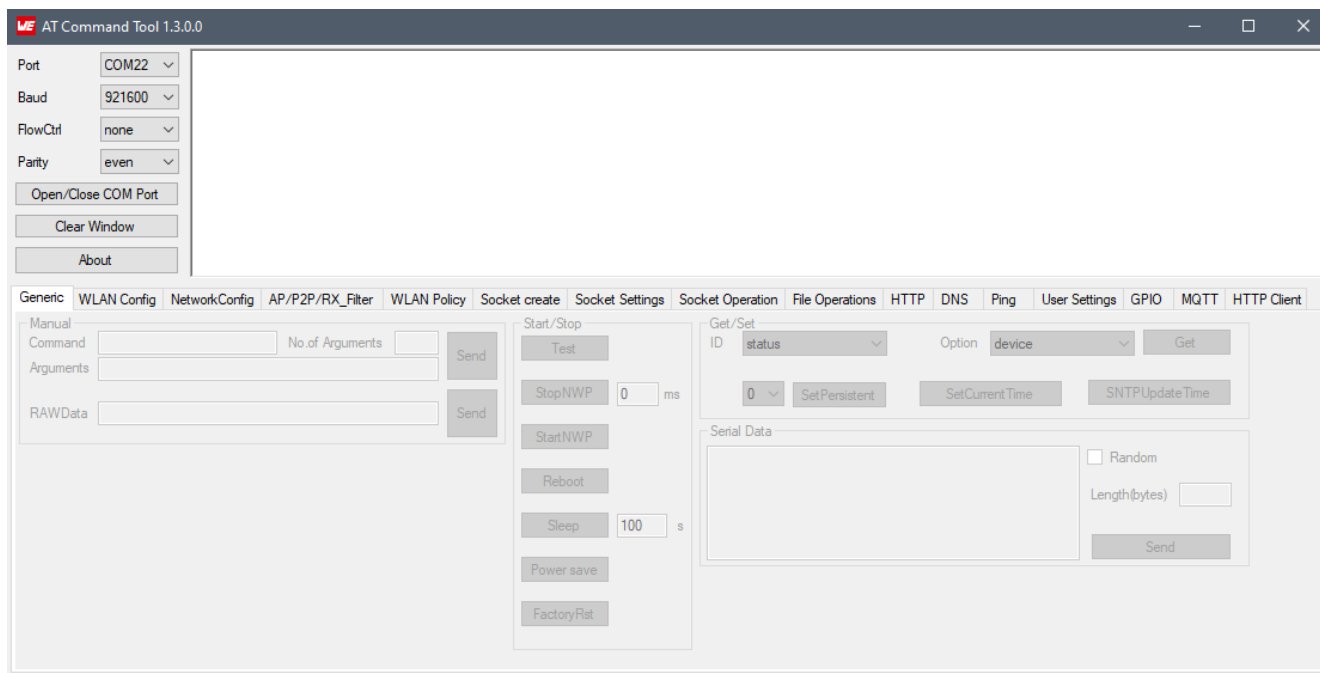


Figure 2: AT command tool start-up

2.2 COM Interface

On connecting the Calypso evaluation board to the PC, the device appears as a USB serial COM port. All the COM ports on the PC are made available for connection under the "Port" drop-down menu. The drop-down menu is automatically updated with connection/disconnection of devices. Select the COM port corresponding to the Calypso by scrolling through the menu. Additional drop-down menus allow selection of serial parameters like baudrate, flow control and parity. The values are set to default configuration of the Calypso and can be used unaltered. Click on Open/Close button to connect/disconnect from the device. Logs in the message window appear indicating connect/disconnect event or errors.



Before connecting a module or device via USB for the first time, the correct driver must be installed and a (virtual) COM port must be available (see section 1.3)

Serial Port
Settings

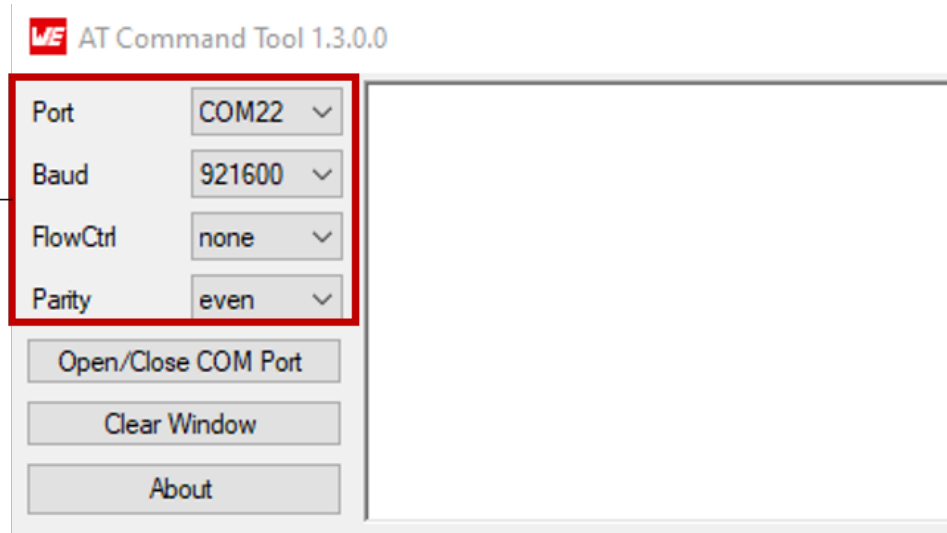


Figure 3: Open COM port

2.3 Function tabs

In order to better organize the AT command set, the commands are organized into logical groups placed under separate tabs. Functions under each category can be seen by pressing on the corresponding tab (figure 4).

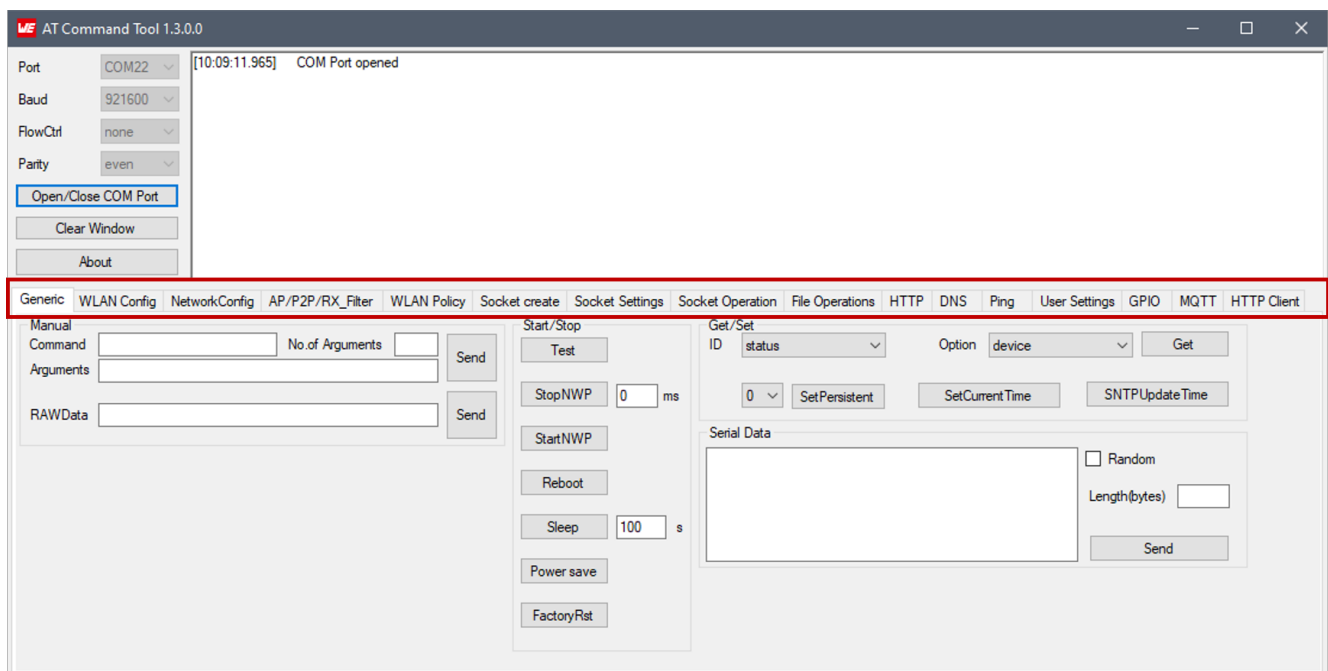


Figure 4: Function tabs

2.4 Message Window

AT command tool has a message window that provides a text based interface to the Calypso. All the communication to and from the Calypso are printed in this window. Each message is preceded with a time stamp. Arrow marks indicate the direction of communication ("=> To Calypso" and "<= from Calypso"). Additional options for logging are available with a right click on the message window. The user can select specific lines from the message box and either copy them to the standard clipboard or save it directly to a file. The message box can be cleared using the clear window button. Figure 5 illustrates all the available options.

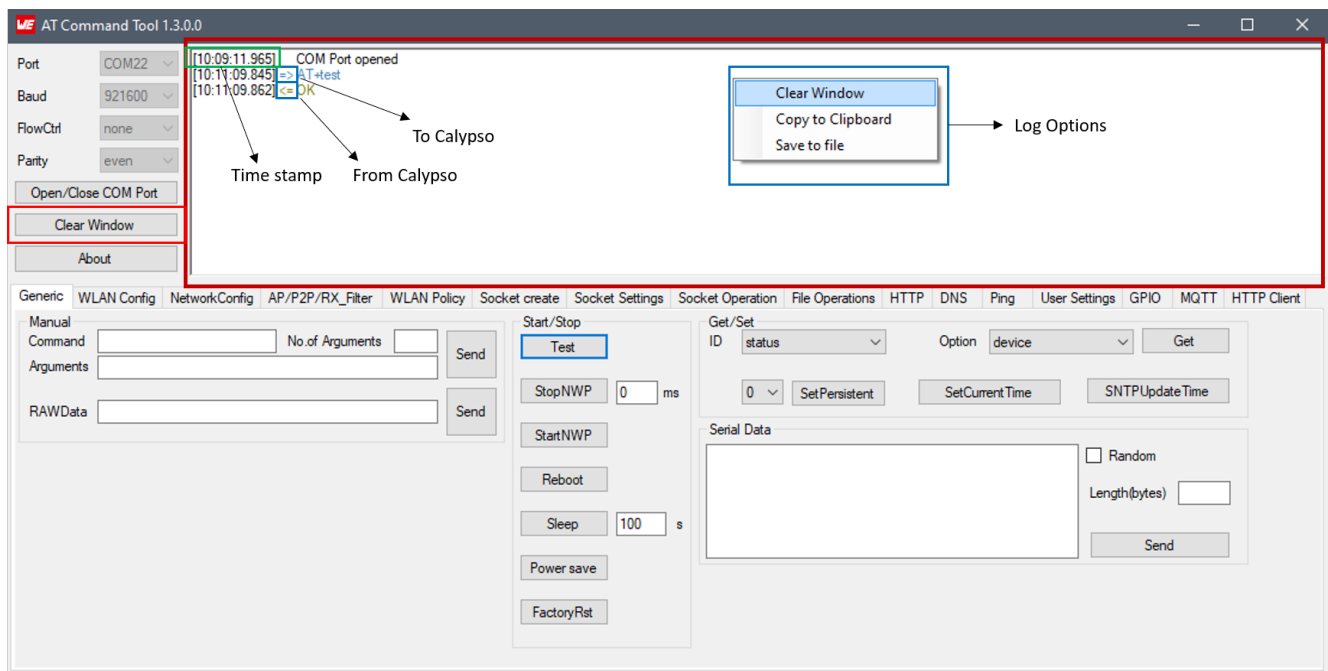


Figure 5: Message window and logging options

2.5 AT command buttons

The main task of the AT command tool is to create and send AT commands to the Calypso module. In order to achieve this, each AT command has a dedicated button within the corresponding tab. The user has to input the parameters of the AT command by either by typing in the value in the corresponding text field or by selecting it from a dropdown menu/radio button/check-box. On pressing the command button, the tool reads the user parameters, creates a command string and sends it out on the serial port. The responses from the Calypso are then displayed on the message window.



The user is required to input only valid values / options to ensure proper behavior of Calypso. Please refer to the Calypso manual for valid parameters and options.

Figure 6 shows an example by sending a sleep command to the Calypso module. Here, the parameter of time to remain in sleep mode in seconds is entered in the text box. On press of the sleep button, the Calypso responds with an "OK" before going to sleep.

For detailed description of individual AT commands, please refer to the user manual of the Calypso Wi-Fi module.

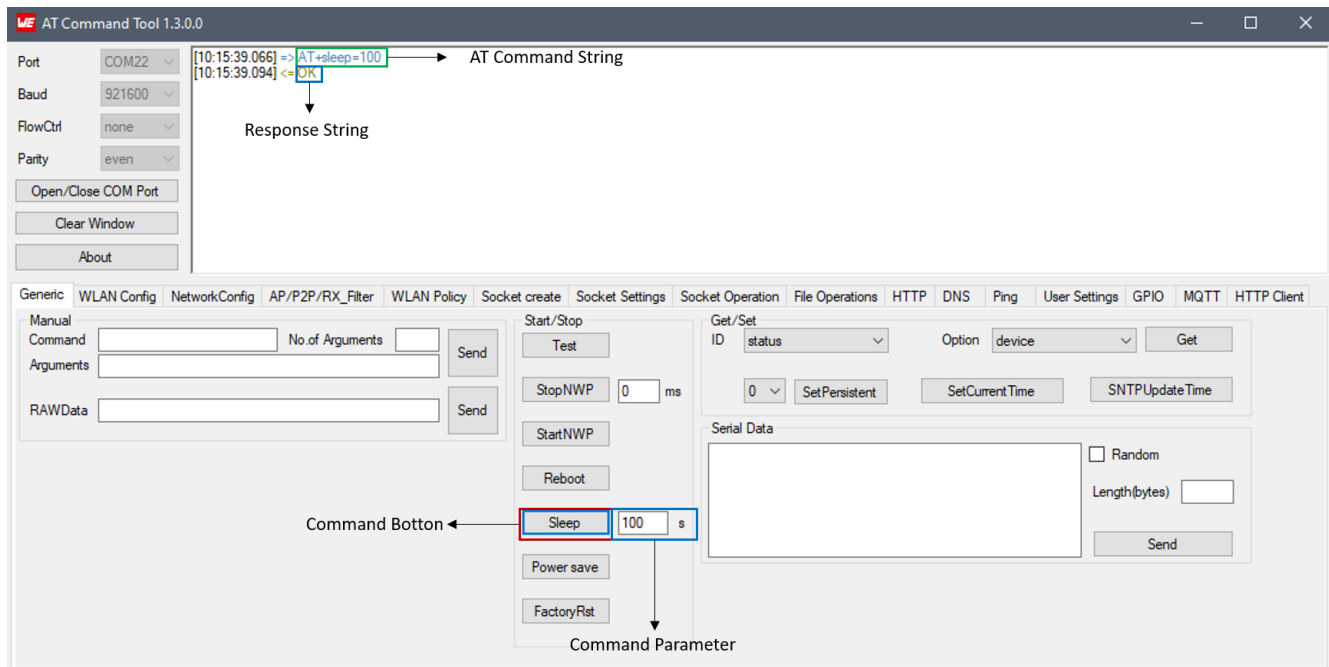


Figure 6: Sending AT command to Calypso

2.6 Sending Manual commands

The tool also supports sending commands by typing in manually. The buttons to send commands manually can be found under the "Generic" tab. Figure 7 shows the two options available to send commands manually with sleep command as an example.

- Option1: Type in the command, number of arguments and the parameters. The tool generates the AT command string. In case of multiple parameters each parameter must be separated by a comma character (,) and without the use of whitespace around that comma.
- Option2: Type in the entire AT command string as described in the Calypso manual.

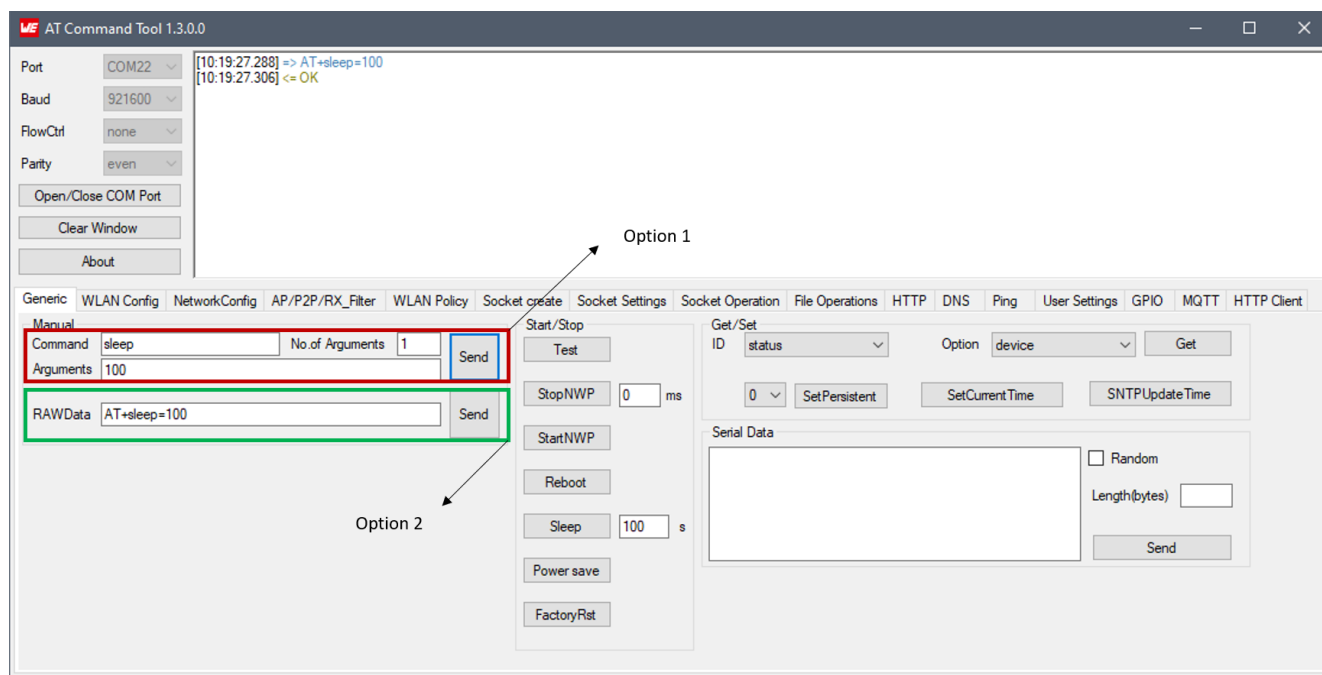


Figure 7: Sending Manual commands to Calypso

3 Software history

Version 1.1.0 "Release"

- First released version of the AT commander tool.

Version 1.2.0 "Release"

- Minor bug fixes for MQTT commands.

Version 1.3.0 "Release"

- New features to support firmware version 2.0.0.
- Performance improvements and bug fixes.

4 Important notes

The following conditions apply to all goods within the wireless connectivity product range of Würth Elektronik eiSos GmbH & Co. KG:

4.1 General customer responsibility

Some goods within the product range of Würth Elektronik eiSos GmbH & Co. KG contain statements regarding general suitability for certain application areas. These statements about suitability are based on our knowledge and experience of typical requirements concerning the areas, serve as general guidance and cannot be estimated as binding statements about the suitability for a customer application. The responsibility for the applicability and use in a particular customer design is always solely within the authority of the customer. Due to this fact, it is up to the customer to evaluate, where appropriate to investigate and to decide whether the device with the specific product characteristics described in the product specification is valid and suitable for the respective customer application or not. Accordingly, the customer is cautioned to verify that the documentation is current before placing orders.

4.2 Customer responsibility related to specific, in particular safety-relevant applications

It has to be clearly pointed out that the possibility of a malfunction of electronic components or failure before the end of the usual lifetime cannot be completely eliminated in the current state of the art, even if the products are operated within the range of the specifications. The same statement is valid for all software sourcecode and firmware parts contained in or used with or for products in the wireless connectivity and sensor product range of Würth Elektronik eiSos GmbH & Co. KG. In certain customer applications requiring a high level of safety and especially in customer applications in which the malfunction or failure of an electronic component could endanger human life or health, it must be ensured by most advanced technological aid of suitable design of the customer application that no injury or damage is caused to third parties in the event of malfunction or failure of an electronic component.

4.3 Best care and attention

Any product-specific data sheets, manuals, application notes, PCN's, warnings and cautions must be strictly observed in the most recent versions and matching to the products firmware revisions. This documents can be downloaded from the product specific sections on the wireless connectivity homepage.

4.4 Customer support for product specifications

Some products within the product range may contain substances, which are subject to restrictions in certain jurisdictions in order to serve specific technical requirements. Necessary information is available on request. In this case, the field sales engineer or the internal sales person in charge should be contacted who will be happy to support in this matter.

4.5 Product improvements

Due to constant product improvement, product specifications may change from time to time. As a standard reporting procedure of the Product Change Notification (PCN) according to the JEDEC-Standard, we inform about major changes. In case of further queries regarding the PCN, the field sales engineer, the internal sales person or the technical support team in charge should be contacted. The basic responsibility of the customer as per section 4.1 and 4.2 remains unaffected. All wireless connectivity module driver software "wireless connectivity SDK" and its source codes as well as all PC software tools are not subject to the Product Change Notification information process.

4.6 Product life cycle

Due to technical progress and economical evaluation we also reserve the right to discontinue production and delivery of products. As a standard reporting procedure of the Product Termination Notification (PTN) according to the JEDEC-Standard we will inform at an early stage about inevitable product discontinuance. According to this, we cannot ensure that all products within our product range will always be available. Therefore, it needs to be verified with the field sales engineer or the internal sales person in charge about the current product availability expectancy before or when the product for application design-in disposal is considered. The approach named above does not apply in the case of individual agreements deviating from the foregoing for customer-specific products.

4.7 Property rights

All the rights for contractual products produced by Würth Elektronik eiSos GmbH & Co. KG on the basis of ideas, development contracts as well as models or templates that are subject to copyright, patent or commercial protection supplied to the customer will remain with Würth Elektronik eiSos GmbH & Co. KG. Würth Elektronik eiSos GmbH & Co. KG does not warrant or represent that any license, either expressed or implied, is granted under any patent right, copyright, mask work right, or other intellectual property right relating to any combination, application, or process in which Würth Elektronik eiSos GmbH & Co. KG components or services are used.

4.8 General terms and conditions

Unless otherwise agreed in individual contracts, all orders are subject to the current version of the "General Terms and Conditions of Würth Elektronik eiSos Group", last version available at www.we-online.com.

5 Legal notice

5.1 Exclusion of liability

Würth Elektronik eiSos GmbH & Co. KG considers the information in this document to be correct at the time of publication. However, Würth Elektronik eiSos GmbH & Co. KG reserves the right to modify the information such as technical specifications or functions of its products or discontinue the production of these products or the support of one of these products without any written announcement or notification to customers. The customer must make sure that the information used corresponds to the latest published information. Würth Elektronik eiSos GmbH & Co. KG does not assume any liability for the use of its products. Würth Elektronik eiSos GmbH & Co. KG does not grant licenses for its patent rights or for any other of its intellectual property rights or third-party rights.

Notwithstanding anything above, Würth Elektronik eiSos GmbH & Co. KG makes no representations and/or warranties of any kind for the provided information related to their accuracy, correctness, completeness, usage of the products and/or usability for customer applications. Information published by Würth Elektronik eiSos GmbH & Co. KG regarding third-party products or services does not constitute a license to use such products or services or a warranty or endorsement thereof.

5.2 Suitability in customer applications

The customer bears the responsibility for compliance of systems or units, in which Würth Elektronik eiSos GmbH & Co. KG products are integrated, with applicable legal regulations. Customer acknowledges and agrees that it is solely responsible for compliance with all legal, regulatory and safety-related requirements concerning its products, and any use of Würth Elektronik eiSos GmbH & Co. KG components in its applications, notwithstanding any applications-related information or support that may be provided by Würth Elektronik eiSos GmbH & Co. KG. Customer represents and agrees that it has all the necessary expertise to create and implement safeguards which anticipate dangerous consequences of failures, monitor failures and their consequences lessen the likelihood of failures that might cause harm and take appropriate remedial actions. The customer will fully indemnify Würth Elektronik eiSos GmbH & Co. KG and its representatives against any damages arising out of the use of any Würth Elektronik eiSos GmbH & Co. KG components in safety-critical applications.

5.3 Trademarks

AMBER wireless is a registered trademark of Würth Elektronik eiSos GmbH & Co. KG. All other trademarks, registered trademarks, and product names are the exclusive property of the respective owners.

5.4 Usage restriction

Würth Elektronik eiSos GmbH & Co. KG products have been designed and developed for usage in general electronic equipment only. This product is not authorized for use in equipment

where a higher safety standard and reliability standard is especially required or where a failure of the product is reasonably expected to cause severe personal injury or death, unless the parties have executed an agreement specifically governing such use. Moreover, Würth Elektronik eiSos GmbH & Co. KG products are neither designed nor intended for use in areas such as military, aerospace, aviation, nuclear control, submarine, transportation (automotive control, train control, ship control), transportation signal, disaster prevention, medical, public information network etc. Würth Elektronik eiSos GmbH & Co. KG must be informed about the intent of such usage before the design-in stage. In addition, sufficient reliability evaluation checks for safety must be performed on every electronic component, which is used in electrical circuits that require high safety and reliability function or performance. By using Würth Elektronik eiSos GmbH & Co. KG products, the customer agrees to these terms and conditions.

6 License terms

These License terms will take effect upon the purchase and usage of the Würth Elektronik eiSos GmbH & Co. KG wireless connectivity products. You hereby agree that these license terms are applicable to the product and the incorporated software, firmware and source codes (collectively, "Software") made available by Würth Elektronik eiSos in any form, including but not limited to binary, executable or source code form.

The software included in any Würth Elektronik eiSos wireless connectivity product is purchased to you on the condition that you accept the terms and conditions of these license terms. You agree to comply with all provisions under these license terms.

6.1 Limited license

Würth Elektronik eiSos hereby grants you a limited, non-exclusive, non-transferable and royalty-free license to use the software and under the conditions that will be set forth in these license terms. You are free to use the provided software only in connection with one of the products from Würth Elektronik eiSos to the extent described in these license terms. You are entitled to change or alter the source code for the sole purpose of creating an application embedding the Würth Elektronik eiSos wireless connectivity product. The transfer of the source code to third parties is allowed to the sole extent that the source code is used by such third parties in connection with our product or another hardware provided by Würth Elektronik eiSos under strict adherence of these license terms. Würth Elektronik eiSos will not assume any liability for the usage of the incorporated software and the source code. You are not entitled to transfer the source code in any form to third parties without prior written consent of Würth Elektronik eiSos.

You are not allowed to reproduce, translate, reverse engineer, decompile, disassemble or create derivative works of the incorporated software and the source code in whole or in part. No more extensive rights to use and exploit the products are granted to you.

6.2 Usage and obligations

The responsibility for the applicability and use of the Würth Elektronik eiSos wireless connectivity product with the incorporated firmware in a particular customer design is always solely within the authority of the customer. Due to this fact, it is up to you to evaluate and investigate, where appropriate, and to decide whether the device with the specific product characteristics described in the product specification is valid and suitable for your respective application or not.

You are responsible for using the Würth Elektronik eiSos wireless connectivity product with the incorporated firmware in compliance with all applicable product liability and product safety laws. You acknowledge to minimize the risk of loss and harm to individuals and bear the risk for failure leading to personal injury or death due to your usage of the product.

Würth Elektronik eiSos' products with the incorporated firmware are not authorized for use in safety-critical applications, or where a failure of the product is reasonably expected to cause severe personal injury or death. Moreover, Würth Elektronik eiSos' products with the incorporated firmware are neither designed nor intended for use in areas such as military, aerospace, aviation, nuclear control, submarine, transportation (automotive control, train control, ship control), transportation signal, disaster prevention, medical, public information network etc. You

shall inform Würth Elektronik eiSos about the intent of such usage before design-in stage. In certain customer applications requiring a very high level of safety and in which the malfunction or failure of an electronic component could endanger human life or health, you must ensure to have all necessary expertise in the safety and regulatory ramifications of your applications. You acknowledge and agree that you are solely responsible for all legal, regulatory and safety-related requirements concerning your products and any use of Würth Elektronik eiSos' products with the incorporated firmware in such safety-critical applications, notwithstanding any applications-related information or support that may be provided by Würth Elektronik eiSos. **YOU SHALL INDEMNIFY WÜRTH ELEKTRONIK EISOS AGAINST ANY DAMAGES ARISING OUT OF THE USE OF WÜRTH ELEKTRONIK EISOS' PRODUCTS WITH THE INCORPORATED FIRMWARE IN SUCH SAFETY-CRITICAL APPLICATIONS.**

6.3 Ownership

The incorporated firmware created by Würth Elektronik eiSos is and will remain the exclusive property of Würth Elektronik eiSos.

6.4 Firmware update(s)

You have the opportunity to request the current and actual firmware for a bought wireless connectivity product within the time of warranty. However, Würth Elektronik eiSos has no obligation to update a modules firmware in their production facilities, but can offer this as a service on request. The upload of firmware updates falls within your responsibility, e.g. via ACC or another software for firmware updates. Firmware updates will not be communicated automatically. It is within your responsibility to check the current version of a firmware in the latest version of the product manual on our website. The revision table in the product manual provides all necessary information about firmware updates. There is no right to be provided with binary files, so called "firmware images", those could be flashed through JTAG, SWD, Spi-Bi-Wire, SPI or similar interfaces.

6.5 Disclaimer of warranty

THE FIRMWARE IS PROVIDED "AS IS". YOU ACKNOWLEDGE THAT WÜRTH ELEKTRONIK EISOS MAKES NO REPRESENTATIONS AND WARRANTIES OF ANY KIND RELATED TO, BUT NOT LIMITED TO THE NON-INFRINGEMENT OF THIRD PARTIES' INTELLECTUAL PROPERTY RIGHTS OR THE MERCHANTABILITY OR FITNESS FOR YOUR INTENDED PURPOSE OR USAGE. WÜRTH ELEKTRONIK EISOS DOES NOT WARRANT OR REPRESENT THAT ANY LICENSE, EITHER EXPRESS OR IMPLIED, IS GRANTED UNDER ANY PATENT RIGHT, COPYRIGHT, MASK WORK RIGHT, OR OTHER INTELLECTUAL PROPERTY RIGHT RELATING TO ANY COMBINATION, MACHINE, OR PROCESS IN WHICH THE WÜRTH ELEKTRONIK EISOS' PRODUCT WITH THE INCORPORATED FIRMWARE IS USED. INFORMATION PUBLISHED BY WÜRTH ELEKTRONIK EISOS REGARDING THIRD-PARTY PRODUCTS OR SERVICES DOES NOT CONSTITUTE A LICENSE FROM WÜRTH ELEKTRONIK EISOS TO USE SUCH PRODUCTS OR SERVICES OR A WARRANTY OR ENDORSEMENT THEREOF.

6.6 Limitation of liability

Any liability not expressly provided by Würth Elektronik eiSos shall be disclaimed.

You agree to hold us harmless from any third-party claims related to your usage of the Würth Elektronik eiSos' products with the incorporated firmware, software and source code. Würth Elektronik eiSos disclaims any liability for any alteration, development created by you or your customers as well as for any combination with other products.

6.7 Applicable law and jurisdiction

Applicable law to these license terms shall be the laws of the Federal Republic of Germany. Any dispute, claim or controversy arising out of or relating to these license terms shall be resolved and finally settled by the court competent for the location of Würth Elektronik eiSos registered office.

6.8 Severability clause

If a provision of these license terms is or becomes invalid, unenforceable or null and void, this shall not affect the remaining provisions of the terms. The parties shall replace any such provisions with new valid provisions that most closely approximate the purpose of the terms.

6.9 Miscellaneous

Würth Elektronik eiSos reserves the right at any time to change this terms at its own discretion. It is your responsibility to check at Würth Elektronik eiSos homepage for any updates. Your continued usage of the products will be deemed as the acceptance of the change.

We recommend you to be updated about the status of new firmware and software, which is available on our website or in our data sheet and manual, and to implement new software in your device where appropriate.

By ordering a product, you accept these license terms in all terms.

List of Figures

1	Virtual COM port.	4
2	AT command tool start-up	5
3	Open COM port	6
4	Function tabs	6
5	Message window and logging options	7
6	Sending AT command to Calypso	8
7	Sending Manual commands to Calypso	9

List of Tables

**Contact**

Würth Elektronik eiSos GmbH & Co. KG
Division Wireless Connectivity & Sensors

Max-Eyth-Straße 1
74638 Waldenburg
Germany

Tel.: +49 651 99355-0
Fax.: +49 651 99355-69
www.we-online.com/wireless-connectivity

WÜRTH ELEKTRONIK MORE THAN YOU EXPECT