

# USER GUIDE

## UG013 | Graphite Foam Gasket – WE-TGFG



Sebastian Mirasol-Menacho

### 1. INTRODUCTION TO WE-TGFG

The **WE-TGFG** is a graphite over foam gasket that utilizes the superior in-plane conductivity of natural graphite. It is designed for use as an interface between ICs and heat sinks. The foam core allows for pad elasticity and moderate pressure on components. Traditional elastomeric gap filling solutions require the cooling assembly to be parallel to the component, the WE-TGFG foam core allows for special profiles that give designers more freedom.

Heat flows over the graphite surface of the gasket while remaining electrically insulating thanks to its protective films.

### 2. MATERIAL SPECIFICATIONS

The graphite over foam gasket has four main components, as shown in Figure 1.

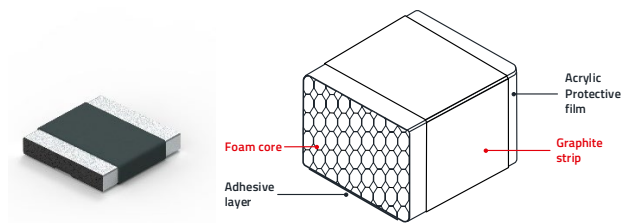


Figure 1: WE-TGFG cross-section.

- **Graphite stripe:**  
Natural graphite has excellent in-plane thermal conductivity. By wrapping it around a foam core we can take advantage of this performance to transfer the heat in a gap-filler setting.
- **Acrylic film:**  
To guarantee electrical insulation between contact surfaces, a thin acrylic film covers the graphite.
- **Foam core:**  
Open-core foam provides the gasket with its mechanical properties and creates pressure to ensure thermal transfer between contact surfaces.

One side is adhesive to hold the gasket in place during installation.

In addition to its thermal management capabilities, the WE-TGFG gasket offers significant mechanical benefits. The elasticity of the foam core ensures that the gasket can accommodate slight variations in component height and surface irregularities, while maintaining consistent thermal contact and pressure distribution. This adaptability reduces the risk of mechanical stress and potential damage to sensitive components and solder joints, improving the overall reliability and longevity of the electronic assembly.

▪ **Adhesive layer:**

To make assembling the gasket easier, there is an adhesive layer on the bottom to help it stay in place until compression.

The properties of the WE-TGFG graphite over foam gasket can be grouped into three categories: material, thermal and electrical as can be seen in Table 1, Table 2 and Table 3.

Material Properties	
Height	1.5 - 30 mm
Length	15 – 300 mm
Width	15 - 50 mm
Compression recovery	98 %
Operating temperature	-40 up to 120 °C

Table 1: Material properties of WE-TGFG.

Thermal Properties (30x30x3 mm Gasket)	
Graphite in-plan thermal conductivity	400 W/m·K
Thermal conductivity in gap-filling application	3 W/m·K

Table 2: Thermal properties of WE-TGFG.

Electrical Properties	
Breakdown voltage	1 kV
Surface resistance	$1 \cdot 10^9 \Omega$

Table 3: Electrical properties of WE-TGFG.

### 3. DESIGN CONSIDERATIONS

A WE-TGFG graphite over foam gasket is used in application the same way as a traditional elastomeric gap filler solution such as the WE-TGF, and it is designed to interface one component with a cooling assembly.

However, it does bring some additional characteristics to gap fillers:

- Profiles to interface non-planar contact surfaces
- Non-tacky surfaces that allow the disassembly of designs without the need to replace the pads as well as sliding insertions.

Let's consider a scenario where we have an embedded system that is dissipating 5 W within an aluminum housing. Since our board has multiple IO ports, there is a clearance of 10 mm between the heat source and the housing that we will use to transfer heat to the ambient. That distance in the field of thermal interface materials is quite significant. The formula for thermal resistance is:

$$R = \frac{L}{\lambda \cdot A} \quad (1)$$

Where:

- L is the bond line thickness; the thickness of the phase change material
- $\lambda$  is the thermal conductivity of material
- A is the area of contact surface

The distance between the source and the housing significantly increases the thermal resistance. Here we should see the graphite excel in providing a path for heat to flow to the housing.

Calculating the thermal resistance of the graphite working as a gap filler is not a trivial task, therefore, we will support ourselves with a FEM simulator, ANSYS Icepak. We will perform two simulations to compare the performance of a traditional elastomeric solution and a WE-TGFG graphite over foam gasket. Both pads are 15x15x10 mm.

The two different set-ups are shown in Figure 2.

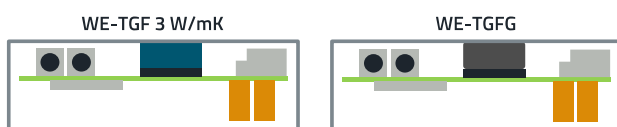


Figure 2: Comparison of traditional elastomeric solution (left) and WE-TGFG (right).

Table 4 shows the specifications of the case scenario:

Housing surface area	60.16 cm <sup>2</sup>
Heat source area	2.25 cm <sup>2</sup>
Gap to fill	10 mm
Power dissipation	5 W

Table 4: Specifications of the case scenario.

Since we only want to perform a comparison between solutions, to decrease the complexity of the simulation we simplify our board to only include the PCB and the heat source as shown in Figure 3.

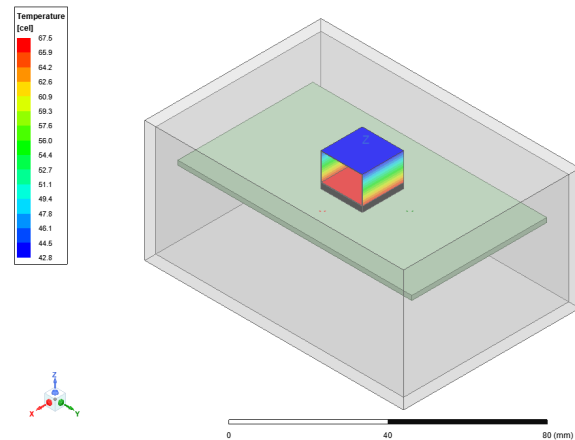


Figure 3: WE-TGFG Simulation.

After we perform both simulations, we compare the temperature of the heat source to evaluate the transfer of heat (Table 5).

Pad	Source temperature	Housing temperature	Calculated thermal resistance
WE-TGF 3 W/m·K	83.6 °C	42.7 °C	8.9 K/W
WE-TGFG	67.5 °C	42.9 °C	4.9 K/W

Table 5: Temperatures at different points with WE-TGF 3 W/m·K and WE-TGFG

In this case scenario where the gap to bridge is quite significant, the WE-TGFG out-performs the traditional elastomeric solution.

### 4. INSTALLATION AND HANDLING

The recommended approach is to install the graphite over foam gasket on the heat source and then assemble the cooling device. It is important to at least ensure a compression pressure of at least 6.8 N/cm<sup>2</sup> between source and sink to guarantee thermal transfer.

In order to ensure correct application, the following steps are recommended:

1. The surface of the component and cooling assemblies must be clean and dry. It is recommended to use isopropyl alcohol applied with a lint-free wipe or swab to remove any particles on contact surfaces.
2. Pick the graphite gasket from the carrier and place it on your design with a slight twisting motion to wet-out the surface and activate the adhesive.
3. Assemble the cooling assembly ensuring mechanical compression.

### 5. MODIFICATION AND PROTOTYPING

Custom profiles can be implemented into the gasket, however, their viability will be verified and confirmed by the engineering team.

#### Cutting

Cutting the gasket to size is strongly discouraged. The heat conducting layer is natural graphite, which is a very flaky material by nature. Puncturing or damaging the protective acrylic film will result in the release of particles that can damage your design.

#### Reworking

If the part gets stuck in the wrong position during assembly, carefully peel it off and reposition it. If it has been previously assembled, there is a risk of delamination.

The non-adhesive contact surface of the gasket is completely dry, and can be joined and separated as long as it is undamaged.

Reach out to your Würth Elektronik representative with the following information and they will get back to you with a personalized quotation:

- Physical dimensions
- Number of parts needed
- Technical drawing of desired part
- Any special requests you may have

### IMPORTANT NOTICE

The Application Note is based on our knowledge and experience of typical requirements concerning these areas. It serves as general guidance and should not be construed as a commitment for the suitability for customer applications by Würth Elektronik eiSos GmbH & Co. KG. The information in the Application Note is subject to change without notice. This document and parts thereof must not be reproduced or copied without written permission, and contents thereof must not be imparted to a third party nor be used for any unauthorized purpose.

Würth Elektronik eiSos GmbH & Co. KG and its subsidiaries and affiliates (WE) are not liable for application assistance of any kind. Customers may use WE's assistance and product recommendations for their applications and design. The responsibility for the applicability and use of WE Products in a particular customer design is always solely within the authority of the customer. Due to this fact it is up to the customer to evaluate and investigate, where appropriate, and decide whether the device with the specific product characteristics described in the product specification is valid and suitable for the respective customer application or not.

The technical specifications are stated in the current data sheet of the products. Therefore the customers shall use the data sheets and are cautioned to verify that data sheets are current. The current data sheets can be downloaded at [www.we-online.com](http://www.we-online.com). Customers shall strictly observe any product-specific notes, cautions and warnings. WE reserves the right to make corrections, modifications, enhancements, improvements, and other changes to its products and services.

WE DOES NOT WARRANT OR REPRESENT THAT ANY LICENSE,

EITHER EXPRESS OR IMPLIED, IS GRANTED UNDER ANY PATENT RIGHT, COPYRIGHT, MASK WORK RIGHT, OR OTHER INTELLECTUAL PROPERTY RIGHT RELATING TO ANY COMBINATION, MACHINE, OR PROCESS IN WHICH WE PRODUCTS OR SERVICES ARE USED. INFORMATION PUBLISHED BY WE REGARDING THIRD-PARTY PRODUCTS OR SERVICES DOES NOT CONSTITUTE A LICENSE FROM WE TO USE SUCH PRODUCTS OR SERVICES OR A WARRANTY OR ENDORSEMENT THEREOF.

WE products are not authorized for use in safety-critical applications, or where a failure of the product is reasonably expected to cause severe personal injury or death. Moreover, WE products are neither designed nor intended for use in areas such as military, aerospace, aviation, nuclear control, submarine, transportation (automotive control, train control, ship control), transportation signal, disaster prevention, medical, public information network etc. Customers shall inform WE about the intent of such usage before design-in stage. In certain customer applications requiring a very high level of safety and in which the malfunction or failure of an electronic component could endanger human life or health, customers must ensure that they have all necessary expertise in the safety and regulatory ramifications of their applications. Customers acknowledge and agree that they are solely responsible for all legal, regulatory and safety-related requirements concerning their products and any use of WE products in such safety-critical applications, notwithstanding any applications-related information or support that may be provided by WE.

CUSTOMERS SHALL INDEMNIFY WE AGAINST ANY DAMAGES ARISING OUT OF THE USE OF WE PRODUCTS IN SUCH SAFETY-CRITICAL APPLICATION.

### USEFUL LINKS



Application Notes

[www.we-online.com/apnotes](http://www.we-online.com/apnotes)



**REDEXPERT** Design Platform

[www.we-online.com/redexpert](http://www.we-online.com/redexpert)



Toolbox

[www.we-online.com/toolbox](http://www.we-online.com/toolbox)



Product Catalog

[www.we-online.com/products](http://www.we-online.com/products)

### CONTACT INFORMATION



[apnotes@we-online.com](mailto:apnotes@we-online.com)

Tel. +49 7942 945 - 0



Würth Elektronik eiSos GmbH & Co. KG

Max-Eyth-Str. 1 74638 Waldenburg Germany

[www.we-online.com](http://www.we-online.com)