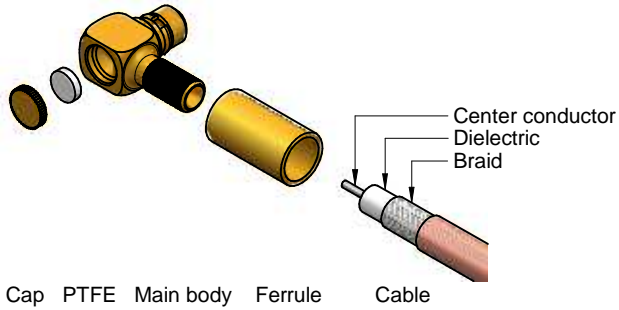
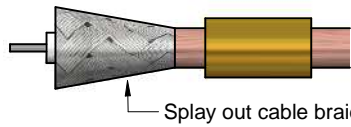


Step 1. Prepare connector components and strip coaxial cable according to given dimensions (check point 1)

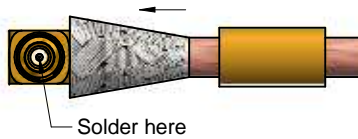


Step 2. Please slide ferrule onto cable and splay out cable braid



Splay out cable braid carefully and avoid damage

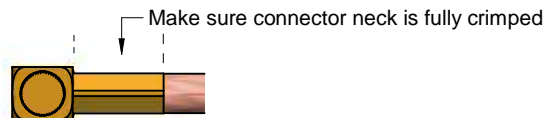
Step 3. Insert cable into connector main body until cable dielectric is attached to connector internal positioning point
Check and make sure cable center conductor sits inside solder slot
Solder cable center conductor using minimum amount of solder paste (check point 2)



Step 4. Cover cable braid over connector neck and push ferrule toward main body
Place PTFE into the connector main body and presses the cap onto connector body until neat and flat (check point 3)



Step 5. Crimp ferrule with tool hex size : .128" (check point 4)



Assembly Method :

Center contact : Soldered
Outer contact : Crimp

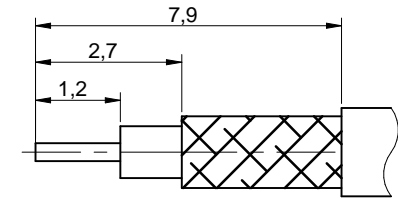
Crimp Tool PN : 600600

Crimp Head PN : 60060060101



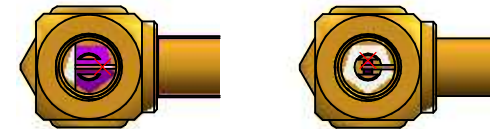
Cable Type : Flexible Cable RG316/RG174/RG188

Cable Strip Dimensions (mm) :



Check Point :

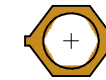
1. No components damaged and no cable split after stripping
2. No excess or lack solder flow, no evidence of melting



3. Remove or cut exposed cable braid with scissor or utility knife



4. No significant dog ear after crimping



Würth Elektronik eiSos GmbH & Co. KG
EMC & Inductive Solutions

Max-Eyth-Str. 1
74638 Waldenburg
Germany
com. +49 79 42 945 - 0

www.we-online.de
eiSos@we-online.de



CREATED
BMa

CHECKED
JCh

DESCRIPTION

Assembly instructions

660 360 112 103 20

REVISION

STATUS

DATE

2020-03-26

BUSINESS UNIT

eiCan