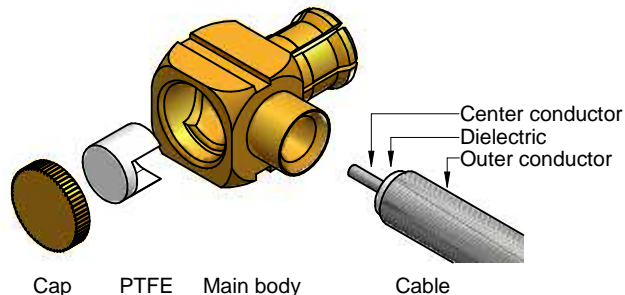
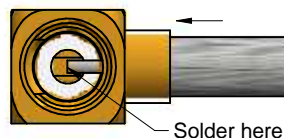


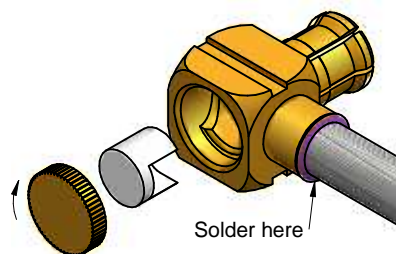
Step 1. Prepare connector components and strip coaxial cable according to given dimensions
(check point 1)



Step 2. Insert cable into connector main body until cable dielectric is attached to connector internal positioning point
Check and make sure cable center conductor sits inside solder slot
Solder cable center conductor using minimum amount of solder paste
(check point 2)



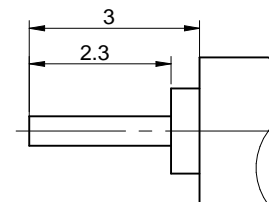
Step 3. Place PTFE into the connector main body and presses the cap onto connector body until neat and flat
Solder 360 degree around solder neck
(check point 3)



Assembly Method :
Center contact : Soldered
Outer contact : Soldered

Cable Type : Hand formable RG405 (.085")

Cable Strip Dimensions (mm) :



Check Point :

1. No components damage and no cable splits after stripping

2. No excess or lack solder flow



3. No excess or lack solder flow



Würth Elektronik eiSos GmbH & Co. KG
EMC & Inductive Solutions

Max-Eyth-Str. 1
74638 Waldenburg
Germany
com. +49 79 42 945 - 0

www.we-online.de
eiSos@we-online.de



CREATED
BMa

CHECKED
JCh

DESCRIPTION

Assembly instructions

606 390 312 108 20

REVISION

STATUS

DATE

2019-12-12

BUSINESS UNIT

eiCan