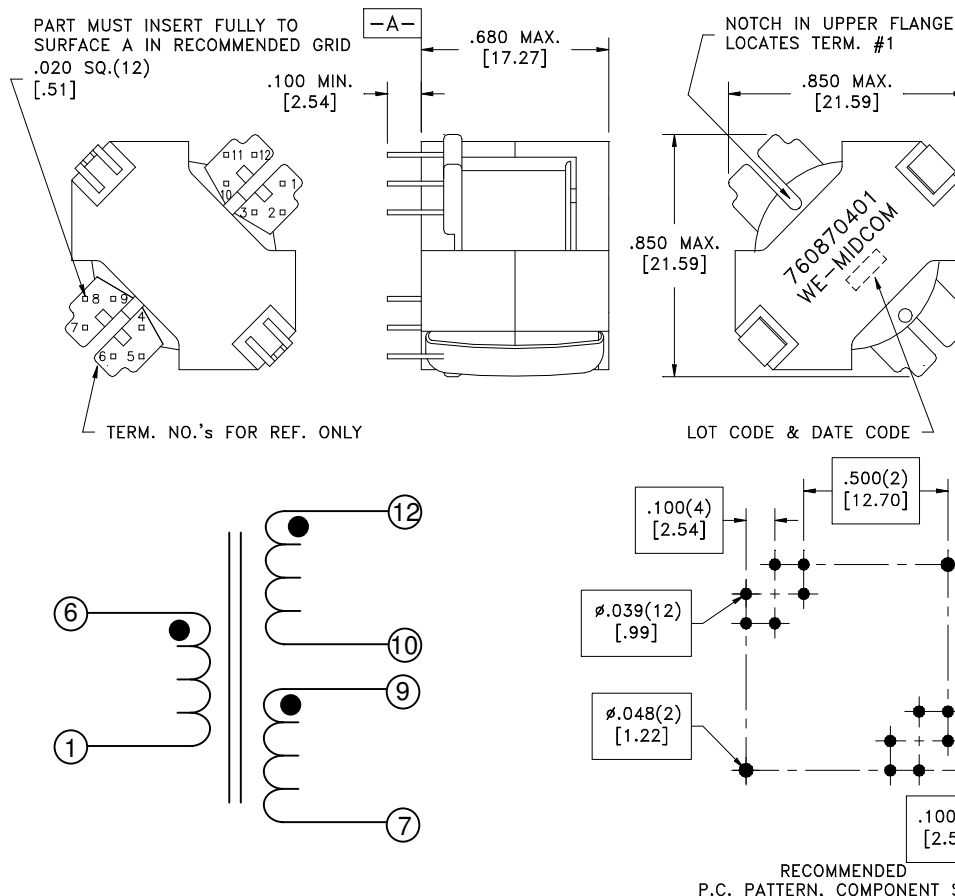


CUSTOMER TERMINAL	RoHS	LEAD(Pb)-FREE
Sn96%, Ag4%	Yes	Yes



ELECTRICAL SPECIFICATIONS @ 25°C unless otherwise noted:

D.C. RESISTANCE (@20°C):	1-6 , 2.70 Ohms max.
	7-9 , 0.180 Ohms max.
	10-12 , 0.180 Ohms max.
DIELECTRIC RATING:	1000VAC, 1 minute tested by applying 1250VAC for 1 second between pins 6-12.
	1000VAC, 1 minute tested by applying 1250VAC for 1 second between pins 6-9.
	1000VAC, 1 minute tested by applying 1250VAC for 1 second between pins 9-12.
INDUCTANCE:	2.90 mH \pm 5%, 50kHz, 100mVAC, 0mADC, 1-6, Ls.
LEAKAGE INDUCTANCE:	350 μ H max., 200kHz, 100mVAC, 1-6(7+9+10+12), Ls.
TURNS RATIO:	(6-1):(9-7) , (26.07):(1.00), \pm 1%.
	(6-1):(12-10) , (26.07):(1.00), \pm 1%.
INTERWINDING CAPACITANCE:	24pF max., 20kHz, 1.0VAC, 6-12, tie(9+10), Cs.

OPERATING TEMPERATURE RANGE: -40°C to +125°C including temp. rise.

WE-Midcom, Inc. Watertown, SD USA Toll Free: 800-643-2661 Fax: 605-886-4486	Unless otherwise specified, tolerances are as follows: Angles: $\pm 1^\circ$ Fractions: $\pm 1/64$ Decimals: $\pm .005$ (.127mm)		WE-Midcom, Inc.	
	Drawing Title Transformer		Drawing Number	Rev.
			760870401	00
	This drawing is dual dimensioned. Dimensions in brackets are in millimeters	Revisions: See Sheet 1		Scale ----
Engineer:PLP				01/21/2010