

CUSTOMER TERMINAL	RoHS	LEAD(Pb)-FREE
Sn96%, Ag4%	Yes	Yes



PART MUST INSERT FULLY TO  
SURFACE A IN RECOMMENDED GRID

.028 SQ.(10)  
[.71]

.118/.150  
[3.00/4.00]

-A-

.910 MAX.  
[23.12]

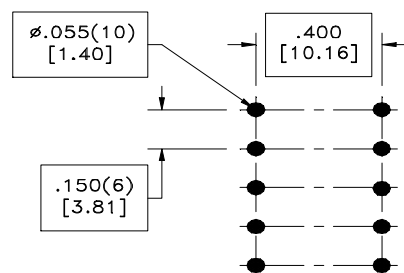
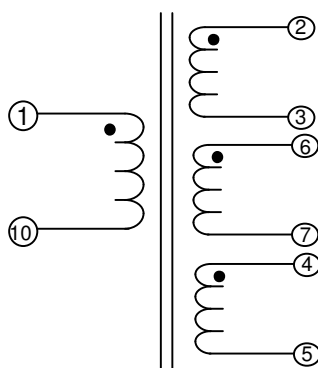
DOT LOCATES TERM. #1

.575 MAX.  
[14.61]

.876 MAX.  
[22.25]

TERM. NO.'s FOR REF. ONLY

LOT CODE & DATE CODE



RECOMMENDED  
P.C. PATTERN, COMPONENT SIDE

#### ELECTRICAL SPECIFICATIONS @ 25°C unless otherwise noted:

D.C. RESISTANCE (@20°C):	1-10 , 4.50 Ohms ±10%.
	2-3 , 0.555 Ohms ±10%.
	4-5 , 0.180 Ohms ±10%.
	6-7 , 0.170 Ohms ±10%.
DIELECTRIC RATING:	1000VAC, 1 minute tested by applying 1250VAC for 1 second between pins 1-2(3+4,5+6,7+8).
INDUCTANCE:	2.00 mH ±10%, 10kHz, 100mVAC, 0mADC, 1-10, Ls.
SATURATION CURRENT:	1.50A saturating current that causes 20% rolloff from initial inductance.
TURNS RATIO:	( 1-10 ):( 2-3 ) , ( 9.74 ):(1.00) , ±1%.
	( 1-10 ):( 6-7 ) , ( 34.78 ):(1.00) , ±1%.
	( 1-10 ):( 4-5 ) , ( 34.78 ):(1.00) , ±1%.
	( 1-10 ):( 8-9 ) , ( 15.21 ):(1.00) , ±1%.

Wire insulation & RoHS status not affected by wire color. Wire insulation color may vary depending on availability.

WE-Midcom, Inc.  Watertown, SD USA  Toll Free: 800-643-2661 Fax: 605-886-4486  This drawing is dual dimensioned. Dimensions is brackets are in millimeters	Unless otherwise specified, tolerances are as follows: Angles: ±1°                      Fractions: ±1/64 Decimals:±.005(.127mm)		WE-Midcom, Inc.		
	Drawing Title  Transformer		Drawing Number	Rev.	
			7608000902	03	
	Revisions: See Sheet 1		Scale ----	Sheet 2 of 5	
Engineer:PLP			04/20/2011		