

CUSTOMER TERMINAL	RoHS	LEAD(Pb)-FREE
Sn96%, Ag4%	Yes	Yes

more than you expect



**ELECTRICAL SPECIFICATIONS @ 25°C unless otherwise noted:**

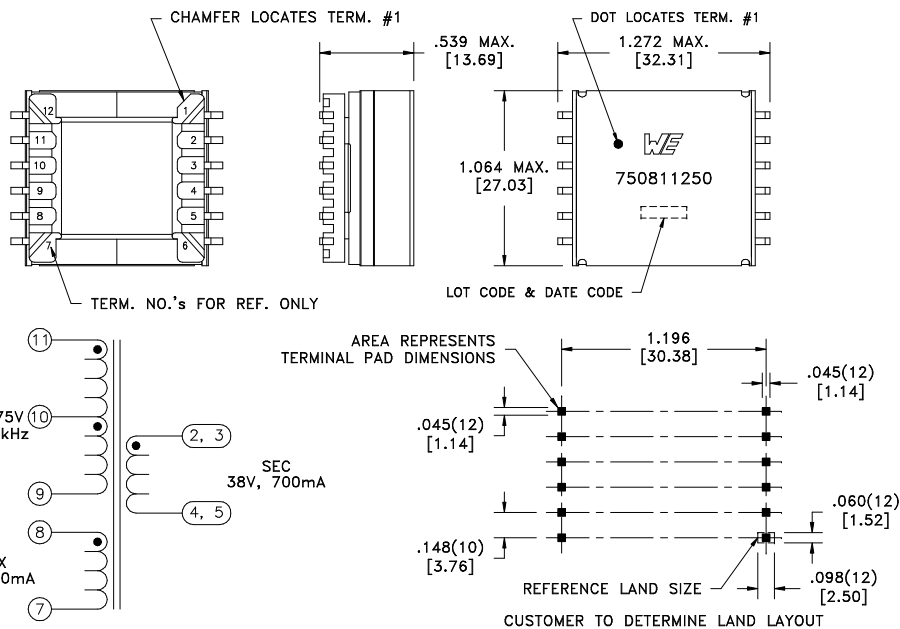
PARAMETER	TEST CONDITIONS	VALUE
D.C. RESISTANCE	11-9 @20°C	1.363 ohms ±10%
D.C. RESISTANCE	8-7 @20°C	1.422 ohms ±10%
D.C. RESISTANCE	2-4 tie(2+3, 4+5), @20°C	0.190 ohms ±10%
INDUCTANCE	11-9 10kHz, 100mVAC, Ls	800.00uH ±10%
SATURATION CURRENT	20% rolloff from initial	2.25A
LEAKAGE INDUCTANCE	11-9 tie(7+8, 2+3+4+5), 100kHz, 100mVAC, Ls	10.0uH typ., 20.0uH max.
DIELECTRIC	11-2 tie(2+3, 4+5), 3750VAC, 1 second	3000VAC, 1 minute
DIELECTRIC	11-7 625VAC, 1 second	500VAC, 1 minute
URNS RATIO	(11-10):(10-9)	1:1, ±2%
URNS RATIO	(11-9):(2-4), tie(2+3, 4+5)	3.46:1, ±2%
URNS RATIO	(11-9):(8-7)	6.92:1, ±2%

**GENERAL SPECIFICATIONS:**

OPERATING TEMPERATURE RANGE: -40°C to +125°C including temp rise.

Designed to comply with the following requirements as defined by IEC60950-1, EN60950-1, UL60950-1/CSA60950-1 and AS/NZS60950.1:

- Reinforced insulation for a primary circuit at a working voltage of 400VDC.



Customer to tie terminals 2+3 and 4+5 on PCB for secondary.

Wire insulation & RoHS status not affected by wire color.  
Wire insulation color may vary depending on availability.

REV.	DATE	Packaging Specifications Method: <b>Tape &amp; Reel</b> PKG-0605 www.we-online.com/midcom		Tolerances unless otherwise specified: Angles: ±1°      Decimals: ±.005 [.13] Fractions: ±1/64      Footprint: ±.005 [.13]	DRAWING TITLE <b>TRANSFORMER</b>	PART NO. <b>750811250</b>
6B	1/12			This drawing is dual dimensioned. Dimensions in brackets are in millimeters.	eiSos p/n: 750811250	SPECIFICATION SHEET 1 OF 1
6A	11/11	SEE REVISION SHEET FOR REVISION LEVEL				

