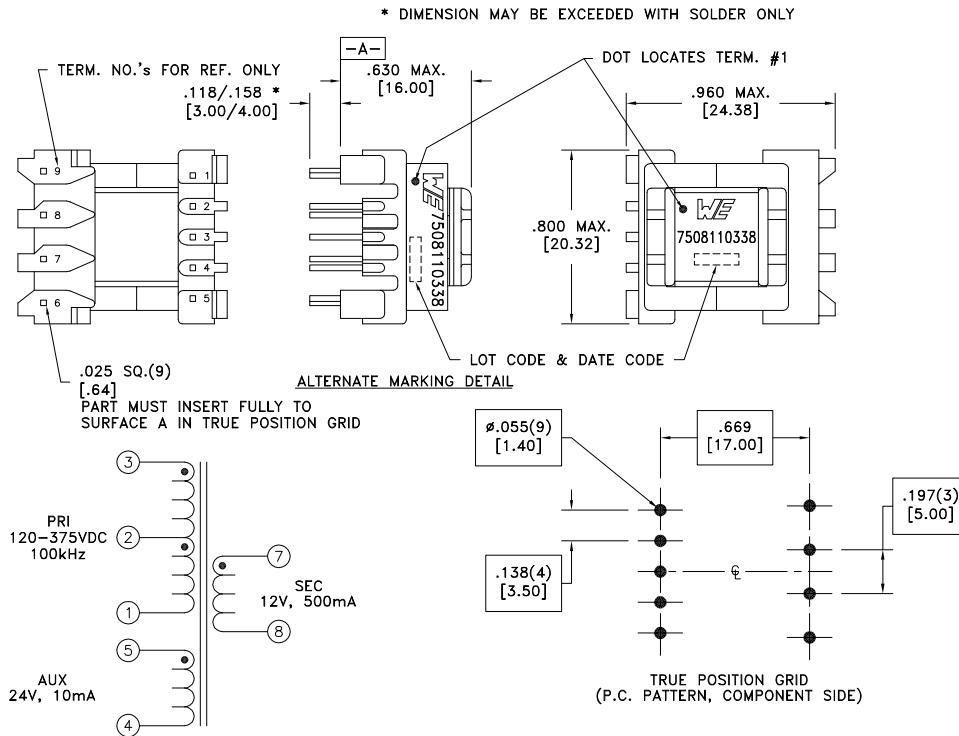


| CUSTOMER TERMINAL | RoHS | LEAD(Pb)-FREE |
|-------------------|------|---------------|
| Sn96%, Ag4% | Yes | Yes |

more than you expect



ELECTRICAL SPECIFICATIONS @ 25°C unless otherwise noted:

| PARAMETER | TEST CONDITIONS | VALUE |
|--------------------|--|---------------------|
| D.C. RESISTANCE | 1-3 @20°C | 1.76 ohms ±10% |
| D.C. RESISTANCE | 4-5 @20°C | 0.340 ohms ±10% |
| D.C. RESISTANCE | 7-8 @20°C | 0.050 ohms ±20% |
| INDUCTANCE | 1-3 10kHz, 100mVAC, Ls | 1.50mH ±10% |
| SATURATION CURRENT | 1-3 20% rolloff from initial | 325mA |
| LEAKAGE INDUCTANCE | 1-3 tie(4+5, 7+8), 100kHz, 100mVAC, Ls | 8uH typ., 13uH max. |
| DIELECTRIC | 1-8 tie(3+4), 4000VAC, 1 second | 4000VAC, 1 minute |
| DIELECTRIC | 1-5 625VAC, 1 second | - |
| URNS RATIO | (2-1):(3-2) | 1:1, ±1% |
| URNS RATIO | (3-1):(5-4) | 3.91:1, ±1% |
| URNS RATIO | (3-1):(7-8) | 7.82:1, ±1% |

GENERAL SPECIFICATIONS:

OPERATING TEMPERATURE RANGE: -40°C to +125°C including temp rise.

Designed to comply with the following requirements as defined by IEC61558-2-16 and EN61558-2-16, Amendment 1:

- Reinforced insulation for a primary circuit at a working voltage of 265Vrms, 400Vpeak (operating frequency of <2MHz).

Wire insulation & RoHS status not affected by wire color.
Wire insulation color may vary depending on availability.

| REV. | DATE | Packaging Specifications | CONVENTION PLACEMENT | Tolerances unless otherwise specified: Angles: ±1° Fractions: ±1/64 Decimals: ±.005 Footprint: ±.001 | DRAWING TITLE | PART NO. |
|------|------|--|----------------------|--|-----------------------|----------------------------|
| | | Method: Tray PKG-0735 www.we-online.com/midcom | | | TRANSFORMER | 7508110338 |
| 6A | 9/16 | SEE REVISION SHEET FOR REVISION LEVEL | | This drawing is dual dimensioned. Dimensions in brackets are in millimeters. | eiSos p/n: 7508110338 | SPECIFICATION SHEET 1 OF 1 |

