

CUSTOMER TERMINAL	RoHS	LEAD(Pb)-FREE
Sn96%, Ag4%	Yes	Yes

more than you expect



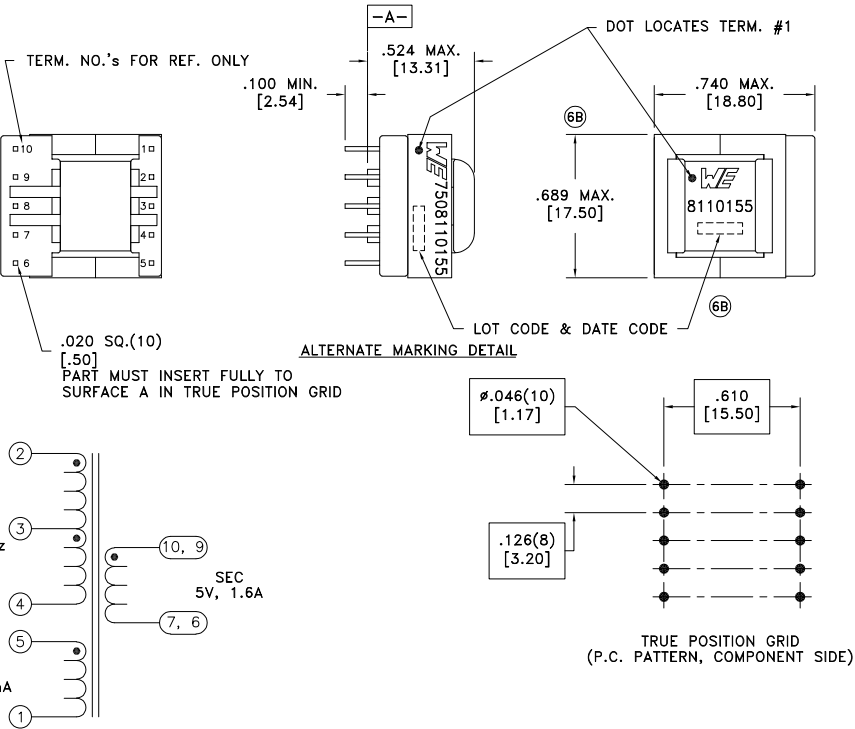
ELECTRICAL SPECIFICATIONS @ 25°C unless otherwise noted:

PARAMETER	TEST CONDITIONS	VALUE
D.C. RESISTANCE	2-4 @20°C	0.750 ohms ±10%
D.C. RESISTANCE	10-7 tie(10+9, 7+6), @20°C	0.012 ohms max.
D.C. RESISTANCE	5-1 @20°C	0.100 ohms ±10%
INDUCTANCE	2-4 100kHz, 100mVAC, Ls	500uH ±10%
LEAKAGE INDUCTANCE	2-4 tie(5+1,6+7+9+10), 100kHz, 100mVAC, Ls	9uH typ., 14uH max.
DIELECTRIC	2-10 tie(2+1, 10+9), 4500VAC, 1 second	4500VAC, 1 minute
DIELECTRIC	2-1 625VAC, 1 second	500VAC, 1 minute
URNS RATIO	(2-4):(10-7), tie(10+9, 7+6)	15:1, ±1%
URNS RATIO	(2-4):(5-1)	5:1, ±1%

GENERAL SPECIFICATIONS:

OPERATING TEMPERATURE RANGE: -40°C to +125°C including temp rise.

Designed to comply with the following requirements as defined by IEC61558-2-16, Amendment 1.  
- Reinforced insulation for a primary circuit at a working voltage of 265VAC.



Wire insulation & RoHS status not affected by wire color.  
Wire insulation color may vary depending on availability.

REV.	DATE	Packaging Specifications		Tolerances unless otherwise specified: Angles: ±1° Fractions: ±1/64 Decimals: ±.005 Footprint: ±.001	DRAWING TITLE <b>TRANSFORMER</b>	PART NO. <b>7508110155</b>
		Method: Tray PKG-0887 www.we-online.com/midcom				
6B	2/23	SEE REVISION SHEET FOR REVISION LEVEL		This drawing is dual dimensioned. Dimensions in brackets are in millimeters.	eiSos p/n: 7508110155	SPECIFICATION SHEET 1 OF 1
6A	10/15					

