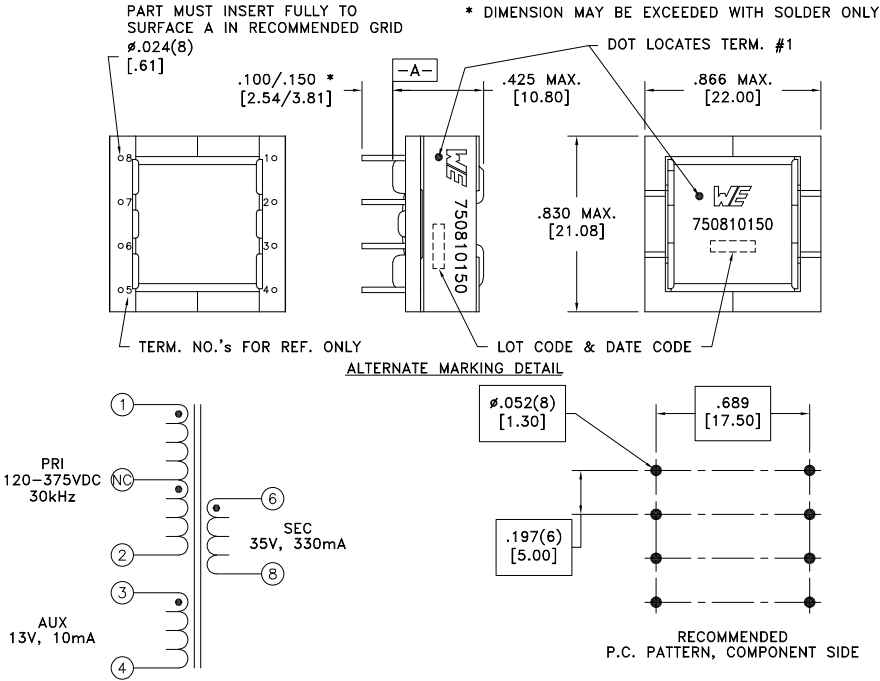


CUSTOMER TERMINAL	RoHS	LEAD(Pb)-FREE
Sn96%, Ag4%	Yes	Yes



ELECTRICAL SPECIFICATIONS @ 25°C unless otherwise noted:



PARAMETER	TEST CONDITIONS	VALUE
D.C. RESISTANCE	1-2 @20°C	2.40 ohms ±10%
D.C. RESISTANCE	3-4 @20°C	0.655 ohms ±10%
D.C. RESISTANCE	6-8 @20°C	0.400 ohms ±10%
INDUCTANCE	1-2 10kHz, 100mVAC, Ls	915uH ±10%
SATURATION CURRENT	1-2 20% rolloff from initial	1.45A
LEAKAGE INDUCTANCE	1-2 tie(3+4, 6+8), 100kHz, 100mVAC, Ls	20uH typ., 40uH max.
DIELECTRIC	1-8 tie(2+3), 4000VAC, 1 second	4000VAC, 1 minute
DIELECTRIC	1-4 625VAC, 1 second	-
URNS RATIO	(1-2):(3-4)	8.93:1, ±1%
URNS RATIO	(1-2):(6-8)	3.91:1, ±1%

GENERAL SPECIFICATIONS:

OPERATING TEMPERATURE RANGE: -40°C to +125°C including temp rise.

Designed to comply with the following requirements as defined by IEC60950-1, EN60950-1, UL60950-1/CSA60950-1 and AS/NZS60950.1:
- Basic insulation for a primary circuit at a working voltage of 265Vrms, 400Vpeak, Overvoltage Category II.

Wire insulation & RoHS status not affected by wire color.
Wire insulation color may vary depending on availability.

REV.	DATE	Packaging Specifications	 CONVENTION PLACEMENT	Tolerances unless otherwise specified: Angles: $\pm 1^\circ$ Decimals: $\pm .005$ [.13] Fractions: $\pm 1/64$ Footprint: $\pm .001$ [.03]	DRAWING TITLE	PART NO.
		Method: Tray PKG-1290 www.we-online.com/midcom		This drawing is dual dimensioned. Dimensions in brackets are in millimeters.	TRANSFORMER	750810150
6C	8/22					
6B	1/18					
6A	10/17	SEE REVISION SHEET FOR				
		REVISION LEVEL		eiSos p/n: 750810150		SPECIFICATION SHEET 1 OF 1