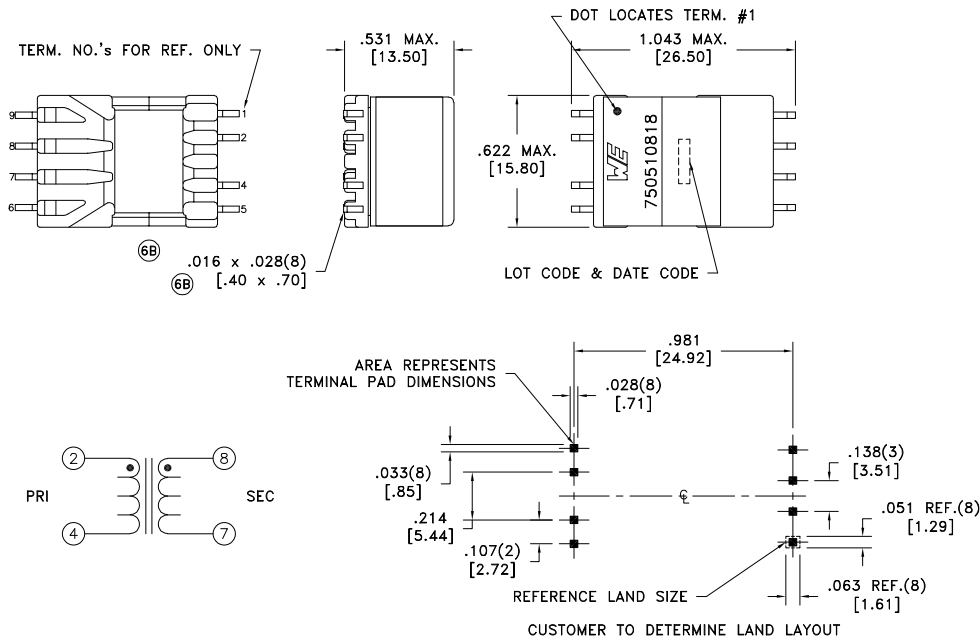


CUSTOMER TERMINAL	RoHS	LEAD(Pb)-FREE
Sn96%, Ag4%	Yes	Yes



ELECTRICAL SPECIFICATIONS @ 25°C unless otherwise noted:

PARAMETER	TEST CONDITIONS	VALUE
D.C. RESISTANCE	2-4 @20°C	0.400 ohms max.
D.C. RESISTANCE	8-7 @20°C	0.600 ohms max.
INDUCTANCE	2-4 100kHz, 100mVAC, Ls	1.00mH ±35%
INDUCTANCE	2-4 100kHz, 100mVAC, 15mA, Ls	1.00mH ±35%
LEAKAGE INDUCTANCE	2-4 tie(7+8), 100kHz, 100mVAC, Ls	1.4uH max.
INTERWINDING CAPACITANCE	2-8 75kHz, 1.0VAC, Cs	40pF max.
DIELECTRIC	2-8 3750VAC, 1 second	3000VAC, 1 minute
URNS RATIO	(8-7):(2-4)	1.73:1, ±2%

GENERAL SPECIFICATIONS:

OPERATING TEMPERATURE RANGE: -20°C to +80°C.

Designed to comply with the following requirements as defined by IEC60950-1, EN60950-1, UL60950-1/CSA60950-1 and AS/NZS60950.1:  
 - Reinforced insulation for a primary circuit at a working voltage of 265Vrms, 400Vpeak, Overvoltage Category II.

Designed to meet 10kV (1.2 x 50usec, 5± repetitions) surge test between PRI and SEC.

Wire insulation & RoHS status not affected by wire color.  
 Wire insulation color may vary depending on availability.

REV.	DATE	Packaging Specifications Method: <b>Tape &amp; Reel</b> PKG-1057 www.we-online.com/midcom		Tolerances unless otherwise specified: Angles: ±1° Fractions: ±1/64 Decimals: ±.005 [.13] Footprint: ±.005 [.13]	DRAWING TITLE <b>TRANSFORMER</b>	PART NO. <b>750510818</b>
6B	4/22	SEE REVISION SHEET FOR	REVISION LEVEL	This drawing is dual dimensioned. Dimensions in brackets are in millimeters.	eiSos p/n: 750510818	
6A	3/19					SPECIFICATION SHEET 1 OF 1