

CUSTOMER TERMINAL	RoHS	LEAD(Pb)-FREE
Sn96%, Ag4%	Yes	Yes



ELECTRICAL SPECIFICATIONS @ 25°C unless otherwise noted:

PARAMETER	TEST CONDITIONS	VALUE
6B D.C. RESISTANCE	1-3 @20°C	0.200 ohms max.
6B D.C. RESISTANCE	6-4 @20°C	0.200 ohms max.
INDUCTANCE	1-3 100kHz, 10mVAC, Ls	86.00uH min.
LEAKAGE INDUCTANCE	1-3 tie(6+4), 100kHz, 100mVAC, Ls	55nH typ., 200nH max.
DISTRIBUTED CAPACITANCE	1-3 100mVAC, Cs	1.0pF typ., 5.0pF max.
INTERWINDING CAPACITANCE	1-6 100kHz, 10mVAC, Cs	8.5pF typ., 17.0pF max.
DIELECTRIC	1-6 1875VAC, 1 second	1500VAC, 1 minute
TURNS RATIO	(1-3):(6-4)	1:1, ±1%
INSERTION LOSS	1M - 250MHz	-0.50dB typ., -1.00dB max.

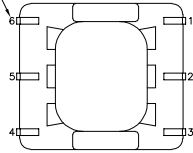
GENERAL SPECIFICATIONS:

OPERATING TEMPERATURE RANGE: -40°C to +85°C.

Designed to comply with the following requirements as defined by IEC60950-1, EN60950-1, UL60950-1/CSA60950-1 and AS/NZS60950.1:

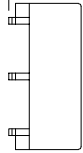
- Functional insulation for a primary circuit at a working voltage of 265Vrms, 400Vpeak, Overvoltage Category II.

TERM. NO.'s FOR REF. ONLY



-A- .004[.10]

.149 MAX. [3.78]

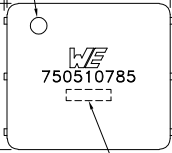


RECESS LOCATES TERM. #1

.339 MAX. [8.60]

.301 REF. [7.65]

.270 MAX. [6.85]



LOT CODE & DATE CODE

.264 [6.70]

.044(6) [1.13]

.021(6) [.53]

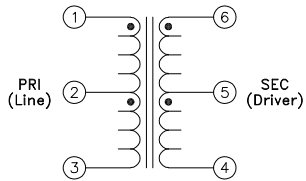
AREA REPRESENTS TERMINAL PAD DIMENSIONS

.100(4) [2.54]

.038 REF.(6) [.97]

.081 REF.(6) [2.06]

REFERENCE LAND SIZE CUSTOMER TO DETERMINE LAND LAYOUT



Wire insulation & RoHS status not affected by wire color.
Wire insulation color may vary depending on availability.

REV.	DATE	Packaging Specifications Method: Tape & Reel PKG-1142 www.we-online.com/midcom		Tolerances unless otherwise specified: Angles: ±1° Fractions: ±1/64 Decimals: ±.005 [.13] Footprint: ±.005 [.13]	DRAWING TITLE TRANSFORMER	PART NO. 750510785
6B	1/20	SEE REVISION SHEET FOR REVISION LEVEL		This drawing is dual dimensioned. Dimensions in brackets are in millimeters.	eiSos p/n: 750510785	
6A	9/17					SPECIFICATION SHEET 1 OF 1