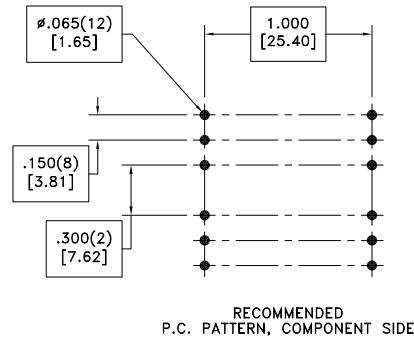
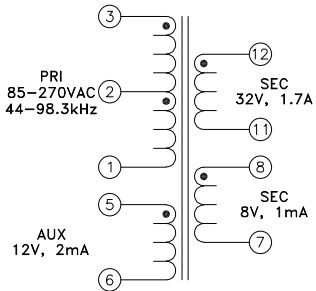
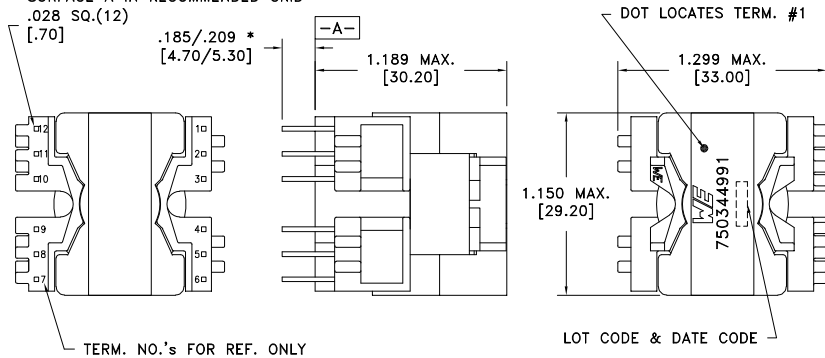


CUSTOMER TERMINAL	RoHS	LEAD(Pb)-FREE
Sn96%, Ag4%	Yes	Yes



PART MUST INSERT FULLY TO SURFACE A IN RECOMMENDED GRID

* DIMENSION MAY BE EXCEEDED WITH SOLDER ONLY



ELECTRICAL SPECIFICATIONS @ 25°C unless otherwise noted:

PARAMETER	TEST CONDITIONS	VALUE
D.C. RESISTANCE	1-3 @20°C	0.91 ohms max.
D.C. RESISTANCE	5-6 @20°C	0.19 ohms max.
D.C. RESISTANCE	7-8 @20°C	0.29 ohms max.
D.C. RESISTANCE	11-12 @20°C	0.13 ohms max.
INDUCTANCE	1-3 10kHz, 100mVAC, Ls	1290.00uH ±10%
SATURATION CURRENT	1-3 20% rolloff from initial	1A
LEAKAGE INDUCTANCE	1-3 tie(7+8+11+12), 100kHz, 100mVAC, Ls	10uH max.
DIELECTRIC	1-12 tie(3+5, 8+11), 4250VAC, 1 second	3400VAC, 1 minute
URNS RATIO	(3-1):(5-6)	6:1
URNS RATIO	(3-1):(12-11)	2.45:1
URNS RATIO	(3-1):(8-7)	9:1

GENERAL SPECIFICATIONS:

OPERATING TEMPERATURE RANGE: -40°C to +125°C including temp rise.

Designed to comply with the following requirements as defined by IEC62368-1, EN62368-1, UL62368-1/CSA62368-1 and AS/NZS62368.1:

- Reinforced insulation for a primary circuit at a working voltage of 270Vrms, 400Vpeak, Overvoltage Category II, Pollution Degree 2.

Wire insulation & RoHS status not affected by wire color.
Wire insulation color may vary depending on availability.

REV.	DATE	Packaging Specifications Method: Tray PKG-1200 www.we-online.com/midcom		Tolerances unless otherwise specified: Angles: ±1° Fractions: ±1/64 Decimals: ±.005 [.13] Footprint: ±.001 [.03]	DRAWING TITLE TRANSFORMER	PART NO. 750344991
6A	8/23	SEE REVISION SHEET FOR REVISION LEVEL	CONVENTION PLACEMENT	This drawing is dual dimensioned. Dimensions in brackets are in millimeters.	eiSos p/n: 750344991	SPECIFICATION SHEET 1 OF 1