

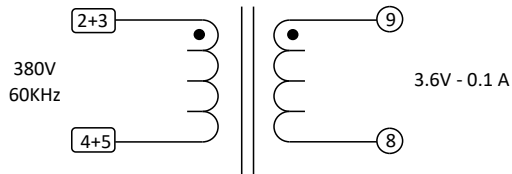
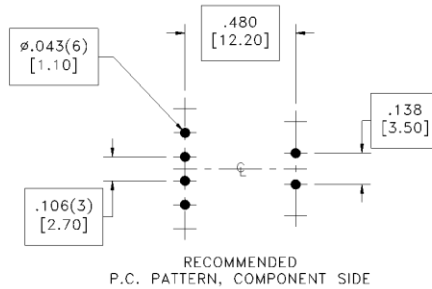
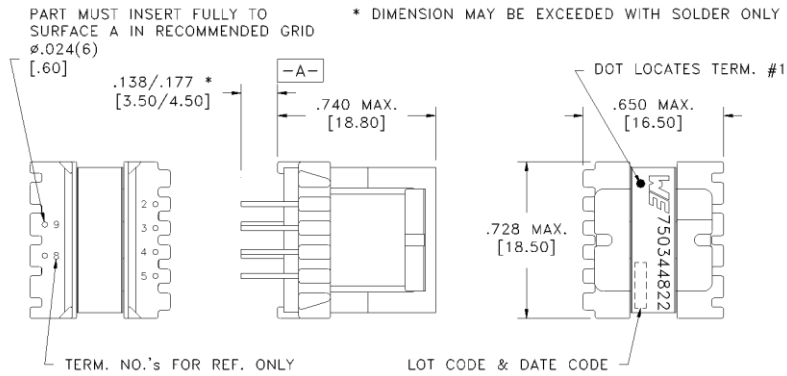
CUSTOMER TERMINAL	RoHS	LEAD(Pb)--FREE
Sn 96%, Ag 4%	Yes	Yes

more than you expect



**ELECTRICAL SPECIFICATIONS @ 25° C unless otherwise noted:**

PARAMETER	TEST CONDITIONS	VALUE
D.C. RESISTANCE	9-8 @20°C	18.2 ohms max.
D.C. RESISTANCE	2-4 tie(2+3,4+5), @20°C	8 mohms max.
INDUCTANCE	9-8 10kHz, 100mV, Ls	10.50mH ±10%
LEAKAGE INDUCTANCE	9-8 tie(2+3+4+5),100kHz, 100mV, Ls	4mH max.
DIELECTRIC	2-9 tie(2+3,4+5), 1875VAC, 1 second	
URNS RATIO	(9-8):(2+3-4+5)	400:1



**GENERAL SPECIFICATIONS:**

OPERATING TEMPERATURE RANGE: -40°C to +125°C including temp rise.

Designed to comply with the following requirements as defined by IEC60950-1, EN60950-1, UL60950-1/CSA60950-1 and AS/NZS60950.1:

Basic insulation

Application of the transformer allows for the leadwires between terminals 2 & 3, 4 & 5 to solder bridge.

Customer to tie terminals 2 + 3 and 4 + 5 on PC board.

Wire insulation & RoHS status not affected by wire color. Wire insulation color may vary depending on availability. Marking detail font and color may vary on preproduction samples.

DFM	Packaging Specifications	 CONVENTION PLACEMENT	Tolerances unless otherwise specified: Angles: $\pm 1^\circ$ Decimals: $\pm .005$ [.13] Fractions: $\pm 1/64$ Footprint: $\pm .001$ [.03]	DRAWING TITLE	PART NO.
DATE	Method: Tray		This drawing is dual dimensioned. Dimensions in brackets are in millimeters.	<b>TRANSFORMER</b>	<b>750344822</b>
ENG	NWU	PKG-0967			
REV.	00				
DATE	2021/1/13	www.we-online.com/midcom			SPECIFICATION SHEET 1 OF 1