

CUSTOMER TERMINAL	RoHS	LEAD(Pb)-FREE
Sn96%, Ag4%	Yes	Yes



ELECTRICAL SPECIFICATIONS @ 25°C unless otherwise noted:

PARAMETER	TEST CONDITIONS	VALUE
D.C. RESISTANCE	1-3 @20°C	1.63 ohms max.
D.C. RESISTANCE	6-4 @20°C	1.66 ohms max.
INDUCTANCE	1-3 100kHz, 100mVAC, Ls	800.00uH min.
DIELECTRIC	1-6 6000VDC, 1 second	6000VDC, 1 minute
DIELECTRIC	1-6 5000VAC, 1 second	5000VAC, 1 minute
TURNS RATIO	(6-4):(1-3)	1.33:1, ±2%

GENERAL SPECIFICATIONS:

OPERATING TEMPERATURE RANGE: -40°C to +125°C including temp rise.

CURRENT RATING: 350mAAC

VOLTAGE-TIME: 22VuS

8mm min. creepage and clearance distance between PRI & SEC.

Complies with the following requirements as defined by IEC60950-1, EN60950-1, UL60950-1/CSA60950-1 and AS/NZS60950.1:

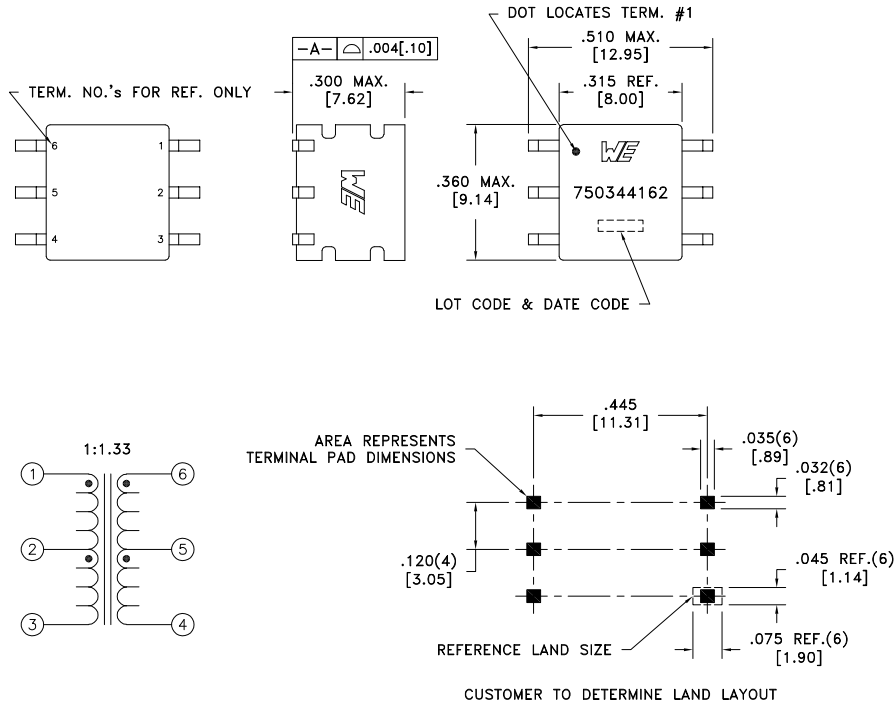
- Reinforced insulation for a primary circuit at a working voltage of 250VAC, Overvoltage Category II, Pollution Degree 2, up to 2km above sea level.

Complies with the following requirements as defined by IEC60601-1(ed.3): aml:

- Providing two means of Patient Protection up to a working voltage of 250VAC.

Complies with the following requirements as defined by IEC60664-1:

- For rated mains voltage <= 300Vrms, Overvoltage Category I to IV, up to 2km above sea level.
- For rated mains voltage <= 600Vrms, Overvoltage Category I to III, up to 2km above sea level.
- For rated mains voltage <= 1000Vrms, Overvoltage Category I to II, up to 2km above sea level.



Wire insulation & RoHS status not affected by wire color.
Wire insulation color may vary depending on availability.

REV.	DATE	Packaging Specifications Method: Tape & Reel PKG-0948 www.we-online.com/midcom		Tolerances unless otherwise specified: Angles: ±1° Decimals: ±.005 [.13] Fractions: ±1/64 Footprint: ±.005 [.13]	DRAWING TITLE TRANSFORMER	PART NO. 750344162
6A	7/20	SEE REVISION SHEET FOR REVISION LEVEL		This drawing is dual dimensioned. Dimensions in brackets are in millimeters.	eiSos p/n: 750344162	SPECIFICATION SHEET 1 OF 1