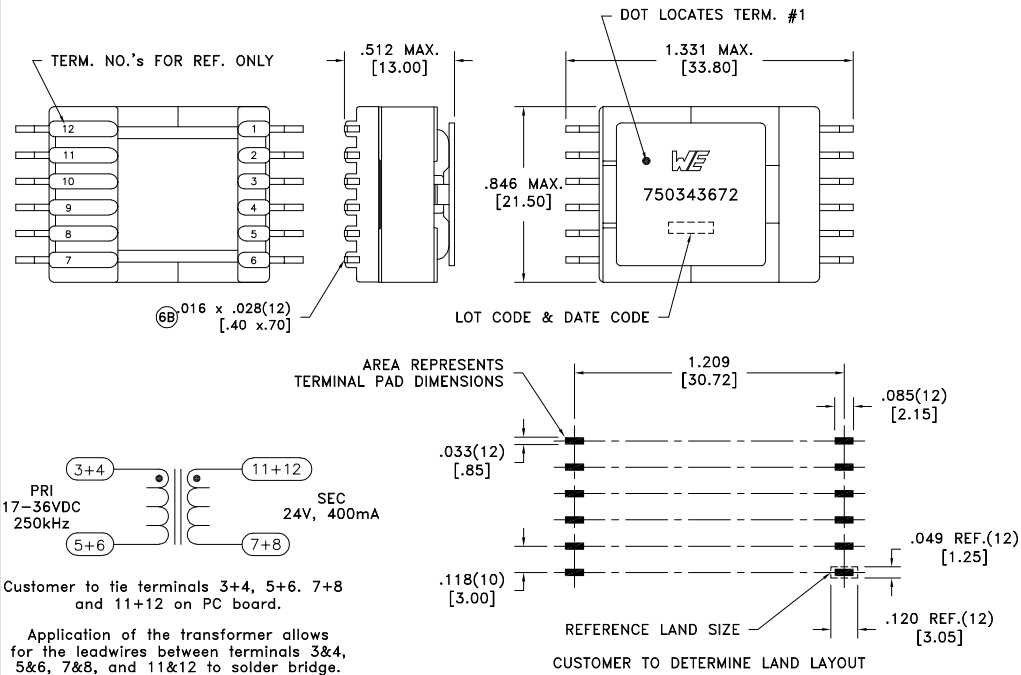


CUSTOMER TERMINAL	RoHS	LEAD(Pb)-FREE
Sn96%, Ag4%	Yes	Yes

more than you expect



ELECTRICAL SPECIFICATIONS @ 25°C unless otherwise noted:

PARAMETER	TEST CONDITIONS	VALUE
D.C. RESISTANCE	4-5 tie(3+4, 5+6), @20°C	0.050 ohms max.
D.C. RESISTANCE	7-11 tie(7+8, 11+12), @20°C	0.400 ohms max.
INDUCTANCE	4-5 tie(3+4, 5+6), 10kHz, 100mVAC, Ls	33.00uH ±10%
INDUCTANCE	4-5 tie(3+4, 5+6), 10kHz, 100mVAC, 5ADC, Ls	4.00uH min.
SATURATION CURRENT	4-5 tie(3+4, 5+6), 20% rolloff from initial	1.8A
LEAKAGE INDUCTANCE	4-5 tie(3+4, 5+6, 7+8+11+12), 100kHz, 100mVAC, Ls	300nH max.
RESONANT FREQUENCY	4-5 tie(3+4, 5+6)	2MHz typ.
DIELECTRIC	3-12 tie(3+4, 11+12), 3750VAC, 1 second	3000VAC, 1 minute
6B TURNS RATIO	(11-7):(4-5), tie(3+4, 5+6, 7+8, 11+12)	2.85:1

GENERAL SPECIFICATIONS:

OPERATING TEMPERATURE RANGE: -40°C to +125°C including temp rise.

- 6B Designed to comply with the following requirements as defined by IEC62368-1, EN62368-1, UL62368-1/CSA62368-1 and AS/NZS62368.1:
- Reinforced insulation for a primary circuit at a working voltage of 265Vrms, 400Vpeak, Overvoltage Category II.

Wire insulation & RoHS status not affected by wire color.
Wire insulation color may vary depending on availability.

REV.	DATE	Packaging Specifications
		Method: Tape & Reel
		PKG-0927
		www.we-online.com/midcom
6B	6/22	
6A	4/18	SEE REVISION SHEET FOR REVISION LEVEL



CONVENTION PLACEMENT

Tolerances unless otherwise specified:
Angles: ±1°
Fractions: ±1/64
Decimals: ±.005
Footprint: ±.005

This drawing is dual dimensioned. Dimensions in brackets are in millimeters.

DRAWING TITLE
TRANSFORMER

eiSos p/n: 750343672



PART NO.
750343672

SPECIFICATION SHEET 1 OF 1