

CUSTOMER TERMINAL	RoHS	LEAD(Pb)-FREE
Sn96%, Ag4%	Yes	Yes



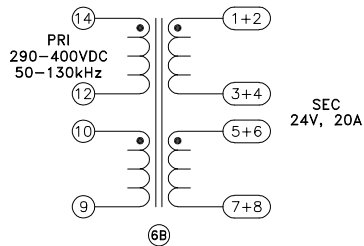
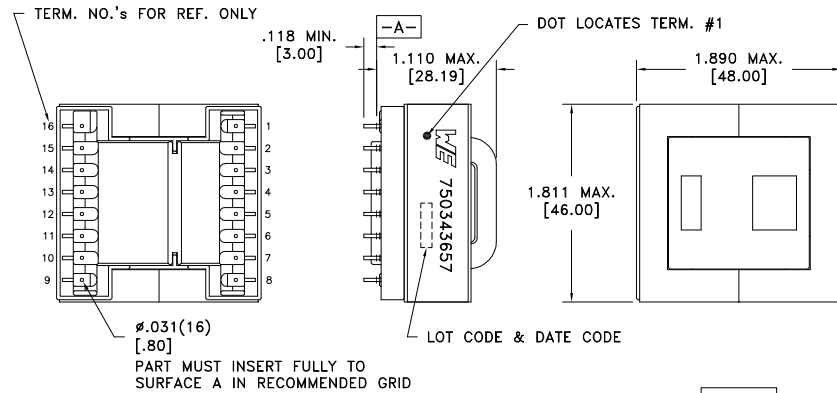
ELECTRICAL SPECIFICATIONS @ 25°C unless otherwise noted:

PARAMETER	TEST CONDITIONS	VALUE
6B D.C. RESISTANCE	10-9 @20°C	0.115 ohms max.
D.C. RESISTANCE	1-3 tie(1+2, 3+4), @20°C	4 mOhms max.
D.C. RESISTANCE	5-7 tie(5+6, 7+8), @20°C	4 mOhms max.
6B D.C. RESISTANCE	14-12 @20°C	50 mOhms max.
6B INDUCTANCE	14-12 50kHz, 100mVAC, Ls	280.00uH ±10%
6B LEAKAGE INDUCTANCE	14-12 tie(1+2+3+4+5+6+7+8), 82kHz, 100mVAC, Ls	43uH ±10%
6B DIELECTRIC	14-1 tie(3+4+5+6, 12+10), 3750VAC, 1 second	-
6B TURNS RATIO	(14-12):(1+2-3+4)	8.33:1, ±2%
6B TURNS RATIO	(14-12):(5+6-7+8)	8.33:1, ±2%
6B TURNS RATIO	(14-12):(10-9)	12.5:1, ±2%

GENERAL SPECIFICATIONS:

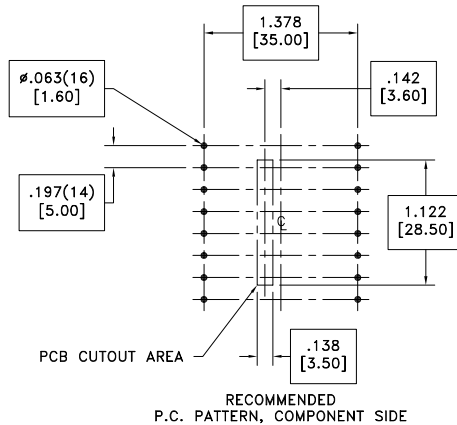
OPERATING TEMPERATURE RANGE: -40°C to +125°C including temp rise.

Designed to comply with the following requirements as defined by IEC60950-1, EN60950-1, UL60950-1/CSA60950-1 and AS/NZS60950.1:  
 - Reinforced insulation for a primary circuit at a working voltage of 265Vrms, 400Vpeak, Overvoltage Category II.



Customer to tie terminals 1+2, 3+4, 5+6 and 7+8 on PC board.

Application of the transformer allows for the leadwires between terminals 1&2, 3&4, 5&6 and 7&8 to solder bridge.



Wire insulation & RoHS status not affected by wire color.  
 Wire insulation color may vary depending on availability.

REV.	DATE	Packaging Specifications Method: Tray PKG-1047 www.we-online.com/midcom		Tolerances unless otherwise specified: Angles: ±1° Fractions: ±1/64 Decimals: ±.005 [.13] Footprint: ±.001 [.03]	DRAWING TITLE <b>TRANSFORMER</b>	PART NO. <b>750343657</b>
6B	9/20			This drawing is dual dimensioned. Dimensions in brackets are in millimeters.	eiSos p/n: 750343657	
6A	6/18	SEE REVISION SHEET FOR REVISION LEVEL				SPECIFICATION SHEET 1 OF 1

