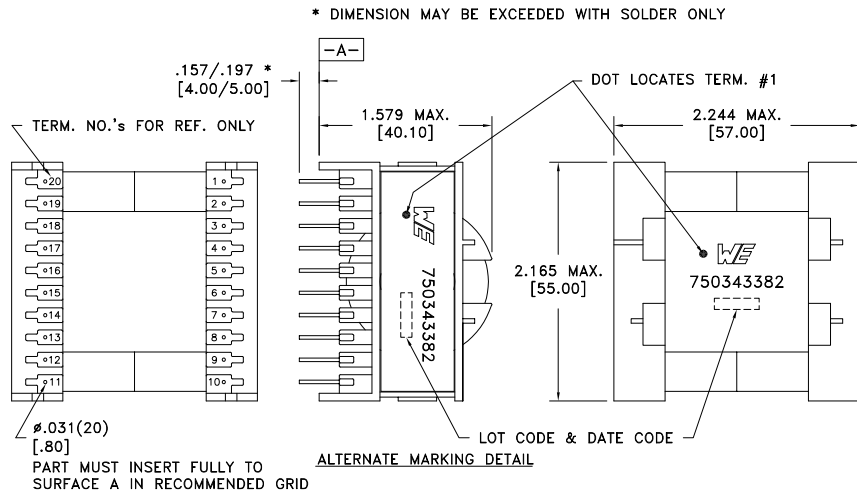


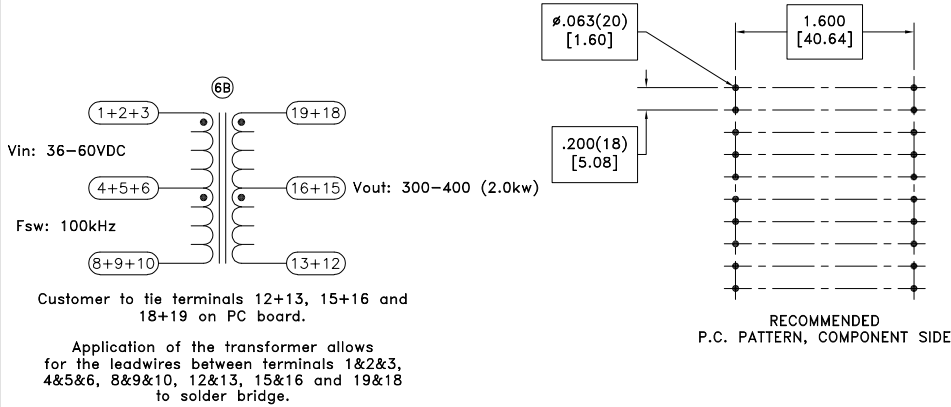
CUSTOMER TERMINAL	RoHS	LEAD(Pb)-FREE
Sn96%, Ag4%	Yes	Yes

more than you expect



ELECTRICAL SPECIFICATIONS @ 25°C unless otherwise noted:

PARAMETER	TEST CONDITIONS	VALUE
D.C. RESISTANCE	1-6 tie(1+2+3, 8+9+10, 4+5+6), @20°C	7 mOhms max.
6B D.C. RESISTANCE	19-16 tie(18+19, 15+16), @20°C	24 mOhms max.
6B D.C. RESISTANCE	16-13 tie(16+15, 13+12), @20°C	24 mOhms max.
6B INDUCTANCE	1-10 tie(1+2+3, 8+9+10), 10kHz, 100mVAC, Ls	45.00uH min.
DIELECTRIC	1-19 tie(1+2+3, 18+19), 1875VAC, 1 second	-
6D TURNS RATIO	(16-12):(1-10), tie(1+2+3, 8+9+10, 16+15, 12+13)	3:1
6D TURNS RATIO	(19-15):(1-10), tie(1+2+3, 8+9+10, 18+19, 15+16)	3:1

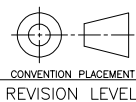


GENERAL SPECIFICATIONS:

OPERATING TEMPERATURE RANGE: -40°C to +125°C including temp rise.

Wire insulation & RoHS status not affected by wire color.  
Wire insulation color may vary depending on availability.

REV.	DATE	Packaging Specifications
6D	5/22	Method: Tray
6C	12/19	PKG-1285
6B	4/18	www.we-online.com/midcom
6A	10/17	SEE REVISION SHEET FOR REVISION LEVEL



Tolerances unless otherwise specified:  
Angles: ±1°  
Decimals: ±.005 [.13]  
Fractions: ±1/64  
Footprint: ±.001 [.03]

This drawing is dual dimensioned. Dimensions in brackets are in millimeters.

DRAWING TITLE  
**TRANSFORMER**

eiSos p/n: 750343382

compliant  
**RoHS**

PART NO.  
**750343382**

SPECIFICATION SHEET 1 OF 1