

CUSTOMER TERMINAL	RoHS	LEAD(Pb)-FREE
Sn96%, Ag4%	Yes	Yes

more than you expect



ELECTRICAL SPECIFICATIONS @ 25°C unless otherwise noted:

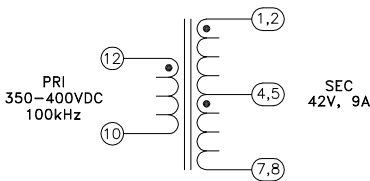
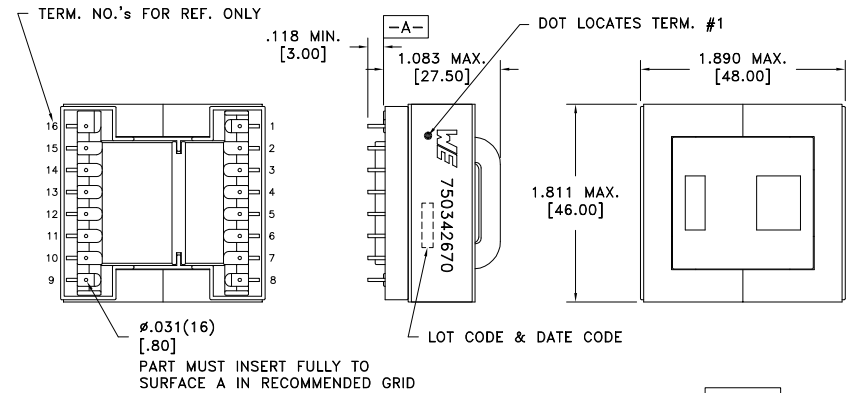
PARAMETER	TEST CONDITIONS	VALUE	
D.C. RESISTANCE	1-4	tie(1+2, 4+5), @20°C	0.012 ohms max
D.C. RESISTANCE	12-10	@20°C	0.08 ohms max
D.C. RESISTANCE	4-7	tie(4+5, 7+8), @20°C	0.012 ohms max
INDUCTANCE	10-12	100kHz, 100mVAC, Ls	400uH ±7%
SATURATION CURRENT		20% rolloff from initial	4.3A
LEAKAGE INDUCTANCE	10-12	tie(1+2+4+5+7+8), 100kHz, 100mVAC, Ls	75uH ±10%
DIELECTRIC	12-1	tie(1+2), 3750VAC, 1 second	3000VAC, 1 minute
TURNS RATIO		(12-10):(1-4), tie(1+2, 4+5)	5:1, ±2%
TURNS RATIO		(12-10):(1-4), tie(7+8, 4+5)	5:1, ±2%

GENERAL SPECIFICATIONS:

OPERATING TEMPERATURE RANGE: -40°C to +125°C including temp rise.

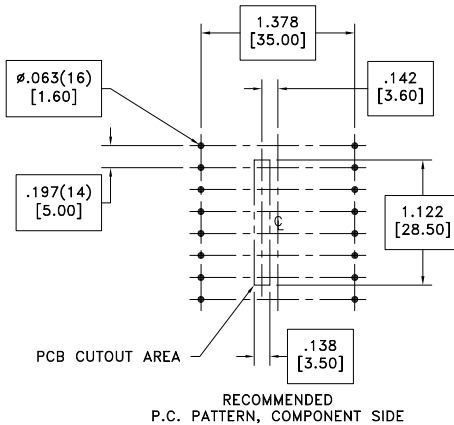
Designed to comply with the following requirements as defined by IEC60950-1, EN60950-1, UL60950-1/CSA60950-1 and AS/NZS60950.1:

- Reinforced insulation for a primary circuit at a working voltage of 400VDC.



Customer to tie terminals 1+2, 4+5 and 7+8 on PCB.

Application of the transformer allows for the leadwires between terminals 1&2, 4&5 and 7&8 to solder bridge.



Wire insulation & RoHS status not affected by wire color.  
Wire insulation color may vary depending on availability.

REV.	DATE	Packaging Specifications Method: Tray PKG-1047 www.we-online.com/midcom		Tolerances unless otherwise specified: Angles: ±1° Fractions: ±1/64 Decimals: ±.005 [.13] Footprint: ±.001 [.03]	DRAWING TITLE <b>TRANSFORMER</b>	PART NO. <b>750342670</b>
6A	6/17	SEE REVISION SHEET FOR REVISION LEVEL	CONVENTION PLACEMENT	This drawing is dual dimensioned. Dimensions in brackets are in millimeters.	eiSos p/n: 750342670	compliant RoHS SPECIFICATION SHEET 1 OF 1