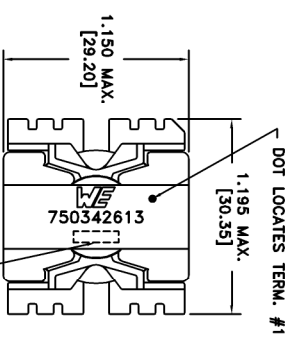
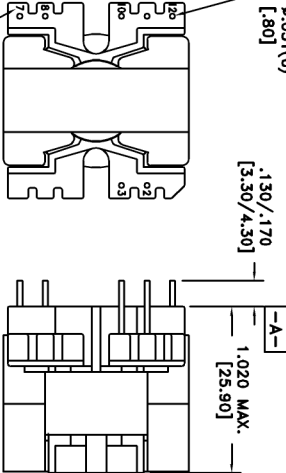


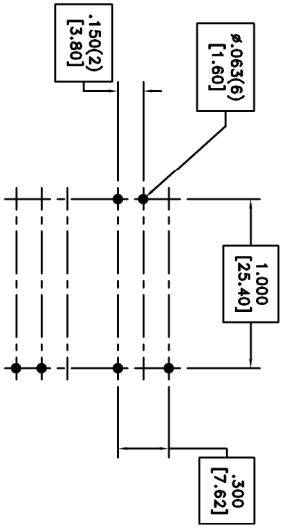
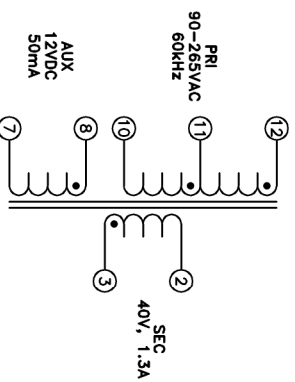
CUSTOMER TERMINAL	RoHS	LEAD(Pb)-FREE
Sn96%, Ag4%	Yes	Yes

PART MUST INSERT FULLY TO SURFACE A IN RECOMMENDED GRID



TERM. NO.'s FOR REF. ONLY

DOT LOCATES TERM. #1



RECOMMENDED P.C. PATTERN, COMPONENT SIDE

ELECTRICAL SPECIFICATIONS @ 25°C unless otherwise noted:

PARAMETER	TEST CONDITIONS	VALUE
D.C. RESISTANCE	3-2 @20°C	0.100 ohms max.
D.C. RESISTANCE	8-7 @20°C	0.700 ohms max.
D.C. RESISTANCE	12-10 @20°C	0.100 ohms max.
INDUCTANCE	12-10 1kHz, 250mVAC, 1s	210µH ±10%
LEAKAGE INDUCTANCE	12-10 tie(2+3+7+8), 100kHz, 250mVAC, 1s	5µH max.
DIELECTRIC	2-12 tie(8+10), 4875VAC, 1 second	-
DIELECTRIC	2-Core 4875VAC, 1 second	-
TURNS RATIO	(12-10):(8-7)	3.33±1, ±2%
TURNS RATIO	(12-10):(3-2)	1.76±1, ±2%

GENERAL SPECIFICATIONS:

OPERATING TEMPERATURE RANGE: -40°C to +125°C including temp rise.
 Designed to comply with the following requirements as defined by IEC61558-2-16:
 - Reinforced insulation for a primary circuit at a working voltage of 265VAC.

Wire insulation & RoHS status not affected by wire color.
 Wire insulation color may vary depending on availability.

REV.	DATE	Packaging Specifications	Method: Tray	Method: Tray	Tolerances unless otherwise specified:	Decimals: ±.005 [0.13]	DRAWING TITLE	PART NO.
		Method: Tray	Method: Tray	Method: Tray	Angles: ±1°	Decimals: ±.005 [0.13]	TRANSFORMER	750342613
		Method: Tray	Method: Tray	Method: Tray	Fractions: ±1/64	Footprint: ±.001 [0.03]		
		Method: Tray	Method: Tray	Method: Tray	This drawing is dual dimensioned. Dimensions in brackets are in millimeters.			
00	9/14	SEE REVISION SHEET FOR REVISION LEVEL	www.we-online.com/midcom	CONVENTION PAGE 1				SPECIFICATION SHEET 1 OF 1



more than you expect