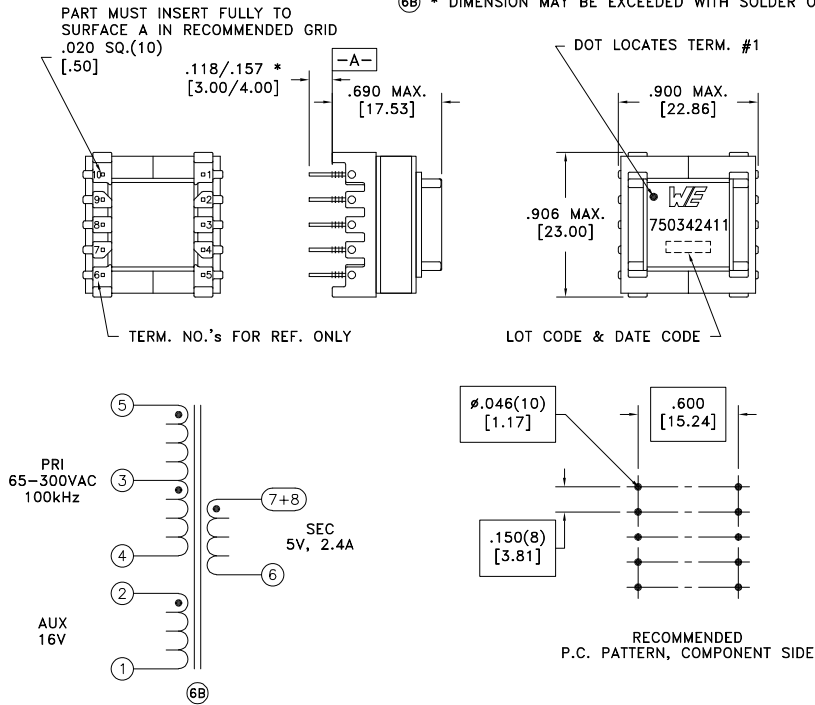


CUSTOMER TERMINAL	RoHS	LEAD(Pb)-FREE
Sn96%, Ag4%	Yes	Yes



⑥B * DIMENSION MAY BE EXCEEDED WITH SOLDER ONLY



ELECTRICAL SPECIFICATIONS @ 25°C unless otherwise noted:

PARAMETER	TEST CONDITIONS	VALUE
D.C. RESISTANCE	1-2 @20°C	0.276 ohms max.
D.C. RESISTANCE	4-5 @20°C	0.930 ohms max.
D.C. RESISTANCE	6-7 tie(7+8), @20°C	0.010 ohms max.
INDUCTANCE	5-4 50kHz, 100mVAC, Ls	571uH ±10%
LEAKAGE INDUCTANCE	5-4 tie(1+2+6+7+8), 100kHz, 100mVAC, Ls	8.0uH max.
DIELECTRIC	5-6 tie(2+3, 7+8), 3750VAC, 1 second	-
DIELECTRIC	6-Core tie(7+8), 3750VAC, 1 second	-
DIELECTRIC	5-Core tie(2+3), 1875VAC, 1 second	-
TURNS RATIO	(5-4):(2-1)	4.15:1, ±2%
TURNS RATIO	(5-4):(7-6), tie(7+8)	13.5:1, ±2%

GENERAL SPECIFICATIONS:

OPERATING TEMPERATURE RANGE: -40°C to +125°C including temp rise.

Designed to comply with the following requirements as defined by IEC60950-1, EN60950-1, UL60950-1/CSA60950-1 and AS/NZS60950.1:

- Reinforced insulation for a primary circuit at a working voltage of 420VDC.

Wire insulation & RoHS status not affected by wire color.
Wire insulation color may vary depending on availability.

REV.	DATE	Packaging Specifications Method: Tray PKG-0736 www.we-online.com/midcom		Tolerances unless otherwise specified: Angles: ±1° Fractions: ±1/64 Decimals: ±.005 [.13] Footprint: ±.001 [.03]	DRAWING TITLE TRANSFORMER	PART NO. 750342411
6B	5/23			This drawing is dual dimensioned. Dimensions in brackets are in millimeters.	eiSos p/n: 750342411	
6A	10/14	SEE REVISION SHEET FOR REVISION LEVEL				SPECIFICATION SHEET 1 OF 1