

CUSTOMER TERMINAL	RoHS	LEAD(Pb)-FREE
Sn96%, Ag4%	Yes	Yes

PART MUST INSERT FULLY TO SURFACE A IN RECOMMENDED GRID * DIMENSION MAY BE EXCEEDED WITH SOLDER ONLY

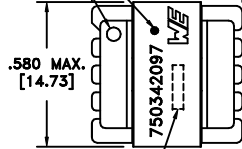
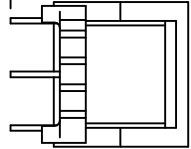
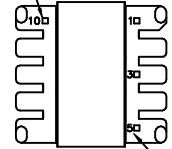
.020 SQ.(4)
[.51]

.100/.130 *
[2.54/3.30]

-.A-
.600 MAX.
[15.24]

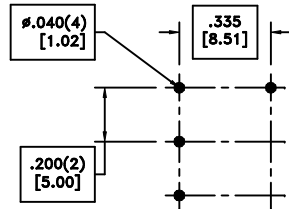
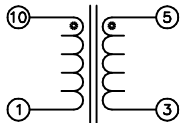
RECESS/DOT LOCATES TERM. #1

.580 MAX.
[14.73]



LOT CODE & DATE CODE

TERM. NO.'s FOR REF. ONLY



RECOMMENDED
P.C. PATTERN, COMPONENT SIDE

ELECTRICAL SPECIFICATIONS @ 25°C unless otherwise noted:

PARAMETER	TEST CONDITIONS	VALUE
D.C. RESISTANCE	10-1 @20°C	1.0 ohms max
D.C. RESISTANCE	5-3 @20°C	7.205 ohms max
INDUCTANCE	10-1 50kHz, 100mVAC, Ls	500uH ±10%
SATURATION CURRENT	10-1 20% rolloff from initial 50kHz, 100mVAC, Ls	1200mA
DIELECTRIC	1-3 1500VAC, 1 second	---
URNS RATIO	(10-1):(5-3)	1.394:1, ±2%

GENERAL SPECIFICATIONS:

OPERATING TEMPERATURE RANGE: -40°C to +125°C including temp rise.

Reference design

Wire insulation & RoHS status not affected by wire color.
Wire insulation color may vary depending on availability.

REV.	DATE	Packaging Specifications Method: Tray PKG-0816 www.we-online.com/midcom		Tolerances unless otherwise specified: Angles: ±1° Decimals: ±.005 [.13] Fractions: ±1/64 Footprint: ±.001 [.03]	DRAWING TITLE INDUCTOR	PART NO. 750342097
00	9/13	SEE REVISION SHEET FOR REVISION LEVEL		This drawing is dual dimensioned. Dimensions in brackets are in millimeters.	eISos p/n: 750342097	SPECIFICATION SHEET 1 OF 1