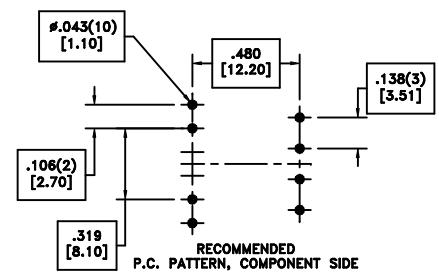
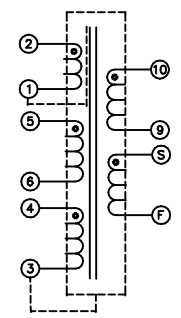
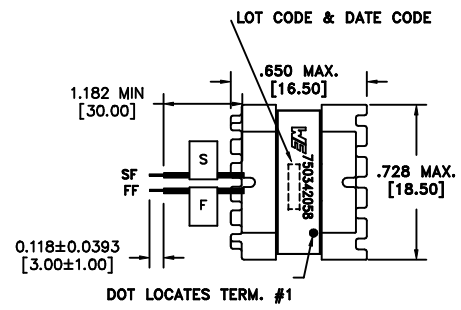
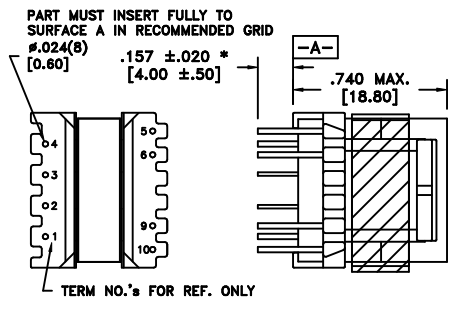


CUSTOMER TERMINAL	RoHS	LEAD(Pb)-FREE
Sn96%, Ag4%	Yes	Yes

more than you expect



ELECTRICAL SPECIFICATIONS @ 25°C unless otherwise noted:

PARAMETER	TEST CONDITIONS	VALUE
D.C. RESISTANCE	2-1 @20°C	4.07 ohms max
D.C. RESISTANCE	4-3 @20°C	0.521 ohms max
D.C. RESISTANCE	10-9 @20°C	0.209 ohms max
D.C. RESISTANCE	5-6 @20°C	0.147 ohms max
D.C. RESISTANCE	S-F @20°C	0.251 ohms max
INDUCTANCE	2-1 50kHz, 100mVAC, L _s	3.4mH ±10%
LEAKAGE INDUCTANCE	2-1 tie(3+4+5+6+9+10+S+F), 100kHz, 100mVAC, L _s	65.0 uh max
DIELECTRIC	1-9 tie(1+3+5,9+S), 4500VAC, 1 second	-
DIELECTRIC	10-CORE 4500VAC, 1 second	-
DIELECTRIC	S-CORE 4500VAC, 1 second	-
URNS RATIO	(2-1):(4-3)	9.231:1, ±2%
URNS RATIO	(2-1):(5-6)	8:1, ±2%
URNS RATIO	(2-1):(10-9)	13.333:1, ±2%
URNS RATIO	(2-1):(S-F)	13.333:1, ±2%

GENERAL SPECIFICATIONS:

OPERATING TEMPERATURE RANGE: -40°C to +125°C including temp rise.

Designed to comply with the following requirements as defined by IEC60950

- Reinforced insulation for a primary circuit at a working voltage of 420VAC.

Wire insulation & RoHS status not affected by wire color.
 Wire insulation color may vary depending on availability.

REV.	DATE	Packaging Specifications Method: Tray PKG-0733 www.we-online.com/midcom		Tolerances unless otherwise specified: Angles: ±1° Decimals: ±.005 [.13] Fractions: ±1/64 Footprint: ±.001 [.03]	DRAWING TITLE TRANSFORMER	PART NO. 750342058
00	09/13	SEE REVISION SHEET FOR REVISION LEVEL	CONVENTION PLACEMENT	This drawing is dual dimensioned. Dimensions in brackets are in millimeters.	eiSos p/n: 750342058	SPECIFICATION SHEET 1 OF 1

