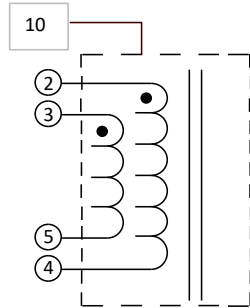
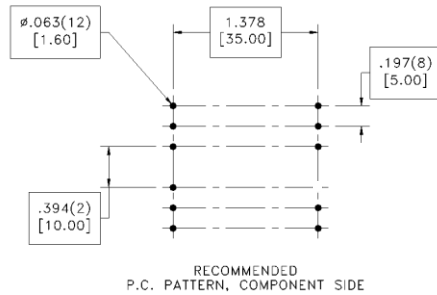
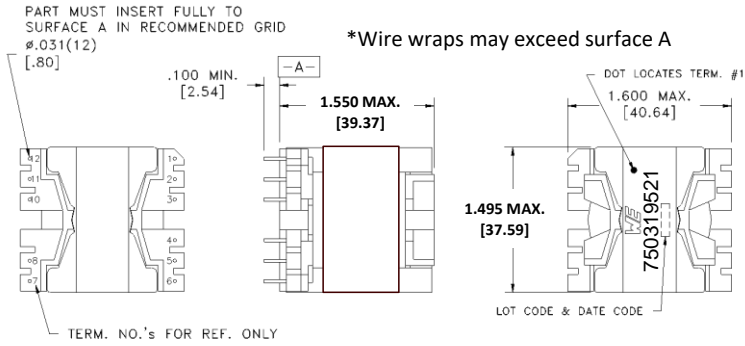


CUSTOMER TERMINAL	RoHS	LEAD(Pb)--FREE
Sn 96%, Ag 4%	Yes	Yes



**ELECTRICAL SPECIFICATIONS @ 25° C unless otherwise noted:**

PARAMETER	TEST CONDITIONS	VALUE
D.C. RESISTANCE	2-5 tie(2+3, 4+5), @20°C	0.048 ohms ±20%
INDUCTANCE	2-5 tie(2+3, 4+5), 10kHz, 100mV, Ls	270.00µH ±10%
SATURATION CURRENT	2-5 tie(2+3, 4+5)	19A
DIELECTRIC	2-Core tie(2+3), 625VAC, 1 second	



**GENERAL SPECIFICATIONS:**

OPERATING TEMPERATURE RANGE: -40°C to +125°C including temp rise.

Application of the transformer allows for the leadwires between terminals 2&3 and 4&5 to solder bridge.

Customer to tie terminals 2+3 and 4+5 on PC board.

Wire insulation & RoHS status not affected by wire color. Wire insulation color may vary depending on availability. Marking detail font and color may vary on preproduction samples.

DFM	Packaging Specifications	 CONVENTION PLACEMENT	Tolerances unless otherwise specified: Angles: ±1°    Decimals: ±.005 [.13] Fractions: ±1/64    Footprint: ±.001 [.03]	DRAWING TITLE	PART NO.
DATE	Method: Tray		This drawing is dual dimensioned. Dimensions in brackets are in millimeters.	<b>INDUCTOR</b>	<b>750319521</b>
ENG	PLP	PKG-1241			
REV.	01				
DATE	2/8/2022	www.we-online.com/midcom			SPECIFICATION SHEET 1 OF 1