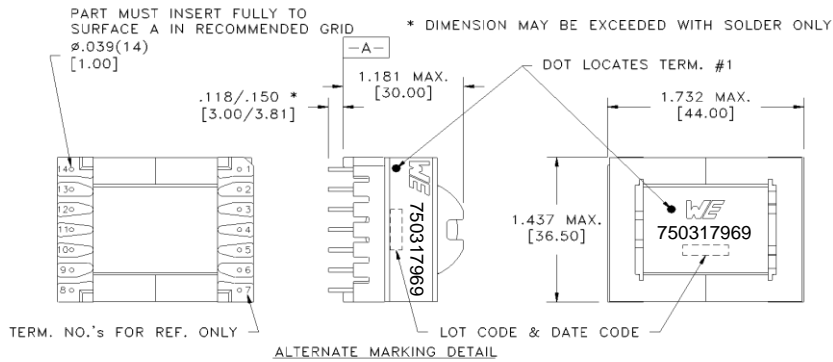


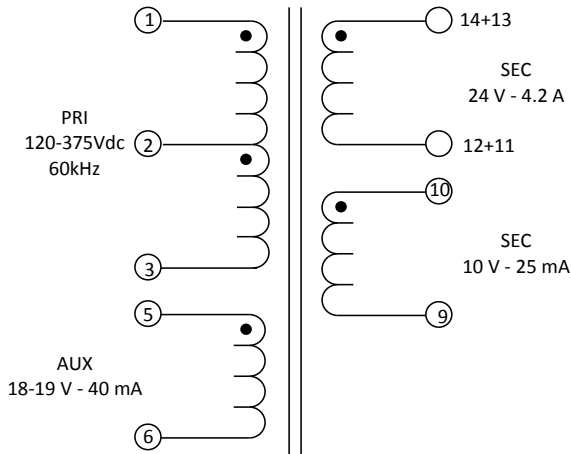
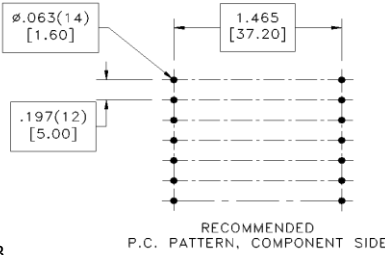
CUSTOMER TERMINAL	RoHS	LEAD(Pb)--FREE
Sn 96%, Ag 4%	Yes	Yes

more than you expect



ELECTRICAL SPECIFICATIONS @ 25° C unless otherwise noted:

PARAMETER	TEST CONDITIONS	VALUE
D.C. RESISTANCE	1-3 @20°C	0.071 ohms ±20%
D.C. RESISTANCE	5-6 @20°C	0.020 ohms max.
D.C. RESISTANCE	9-10 @20°C	0.059 ohms ±20%
D.C. RESISTANCE	11-14 tie(11+12, 13+14), @20°C	0.014 ohms max.
INDUCTANCE	1-3 60kHz, 100mV, Ls	181.00µH ±10%
SATURATION CURRENT	1-3 20% rolloff from initial	9A
LEAKAGE INDUCTANCE	1-3 tie(5+6, 9+10+11+12+13+14), 100kHz, 100mV, Ls	3.75µH typ., 6.00µH max.
LEAKAGE INDUCTANCE	1-3 tie(5+6, 9+10+11+12+13+14), 600kHz, 100mV, Ls	3.50µH typ., 6.00µH max.
DIELECTRIC	1-14 tie(3+5, 10+11+12), 3000VAC, 1 second	3000VAC, 1 minute
DIELECTRIC	1-5 625VAC, 1 second	500VAC, 1 minute
TURNS RATIO	(1-3):(14-11), tie(11+12, 13+14)	6.67:1, ±1%
TURNS RATIO	(1-3):(5-6)	8:1, ±1%
TURNS RATIO	(1-3):(10-9)	13.33:1, ±1%



GENERAL SPECIFICATIONS:

OPERATING TEMPERATURE RANGE: -40°C to +125°C including temp rise.

Designed to comply with the following requirements as defined by IEC60950-1, EN60950-1, UL60950-1/CSA60950-1 and AS/NZS60950.1:

- Reinforced insulation for a primary circuit at a working voltage of 265Vrms, 400Vpeak, Overvoltage Category II, Pollution Degree

Application of the transformer allows for the leadwires between terminals 11 & 12 and 13 & 14 to solder bridge.

Customer to tie terminals 11 + 12 and 13 + 14 on PC board.

Wire insulation & RoHS status not affected by wire color. Wire insulation color may vary depending on availability.

DFM	Packaging Specifications		Tolerances unless otherwise specified: Angles: ±1° Decimals: ±.005 [.13] Fractions: ±1/64 Footprint: ±.001 [.03]	DRAWING TITLE TRANSFORMER	PART NO. 750317969
DATE	Method: Tray		This drawing is dual dimensioned. Dimensions in brackets are in millimeters.		
ENG	CHC	PKG-0810			
REV.	03				
DATE	2/13/2019	www.we-online.com/midcom			SPECIFICATION SHEET 1 OF 1