

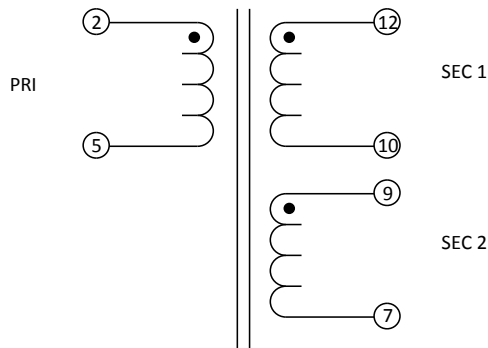
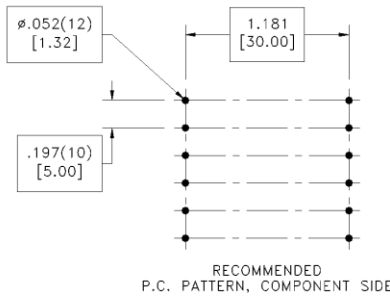
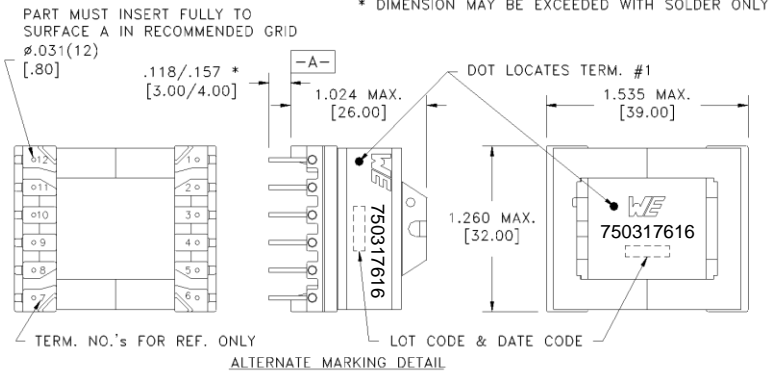
CUSTOMER TERMINAL	RoHS	LEAD(Pb)--FREE
Sn 96%, Ag 4%	Yes	Yes

more than you expect



ELECTRICAL SPECIFICATIONS @ 25° C unless otherwise noted:

PARAMETER	TEST CONDITIONS	VALUE
D.C. RESISTANCE	2-5 @20°C	0.213 ohms ±10%
D.C. RESISTANCE	7-9 @20°C	0.013 ohms ±20%
D.C. RESISTANCE	10-12 @20°C	0.015 ohms ±20%
INDUCTANCE	2-5 10kHz, 100mV, Ls	649.00µH ±5%
LEAKAGE INDUCTANCE	2-5 tie(7+9+10+12),100kHz, 100mV, Ls	54.0µH ±10%
DIELECTRIC	2-12 tie(9+10), 5000VAC, 1 second	
TURNS RATIO	(2-5):(9-7)	5:1, ±1%
TURNS RATIO	(2-5):(12-10)	5:1, ±1%



GENERAL SPECIFICATIONS:

OPERATING TEMPERATURE RANGE: -40°C to +125°C including temp rise.

Designed to comply with the following requirements as defined by IEC61558-2-16, and EN61558-2-16:

- Reinforced insulation for a primary circuit at a working voltage of 265Vrms, 400Vpeak (operating frequency of <1MHz).

REFERENCE DESIGN

Wire insulation & RoHS status not affected by wire color. Wire insulation color may vary depending on availability.

DFM	Packaging Specifications	 CONVENTION PLACEMENT	Tolerances unless otherwise specified: Angles: ±1° Decimals: ±.005 [.13] Fractions: ±1/64 Footprint: ±.001 [.03]	DRAWING TITLE TRANSFORMER	PART NO. 750317616
DATE	Method: Tray PKG-0867		This drawing is dual dimensioned. Dimensions in brackets are in millimeters.		
ENG	PLP				
REV.	03				
DATE	10/31/2018	www.we-online.com/midcom			