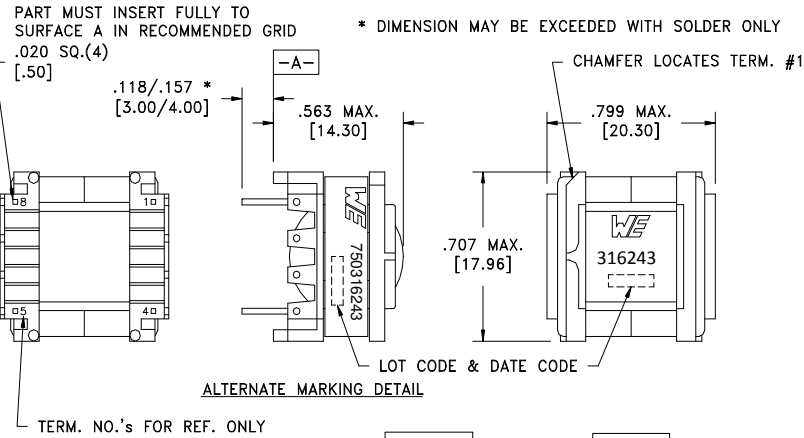


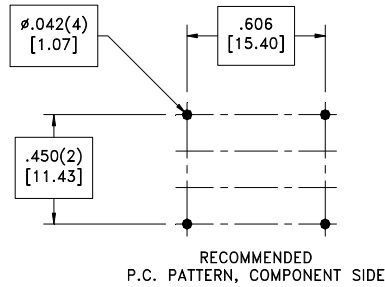
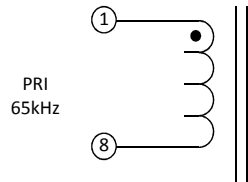
CUSTOMER TERMINAL	RoHS	LEAD(Pb)--FREE
Sn 96%, Ag 4%	Yes	Yes

more than you expect



ELECTRICAL SPECIFICATIONS @ 25° C unless otherwise noted:

PARAMETER	TEST CONDITIONS	VALUE
D.C. RESISTANCE	1-8 @20°C	1.20 ohms ±10%
INDUCTANCE	1-8 10kHz, 100mV, Ls	1.20mH ±10%
SATURATION CURRENT	1-8 20% rolloff from initial	800mA
Q	1-8 100 kHz,100mV	120 min.



GENERAL SPECIFICATIONS:

OPERATING TEMPERATURE RANGE: -40°C to +125°C including temp rise.

REFERENCE DESIGN

Wire insulation & RoHS status not affected by wire color. Wire insulation color may vary depending on availability.

DFM	SP	Packaging Specifications		Tolerances unless otherwise specified: Angles: ±1° Decimals: ±.005 [.13] Fractions: ±1/64 Footprint: ±.001 [.03]	DRAWING TITLE INDUCTOR	PART NO.
DATE	5/17/2016	Method: Tray		This drawing is dual dimensioned. Dimensions in brackets are in millimeters.		750316243
ENG	LJG	PKG-0690				
REV.	00					
DATE	3/14/2017	www.we-online.com/midcom		SPECIFICATION SHEET 1 OF 1		