

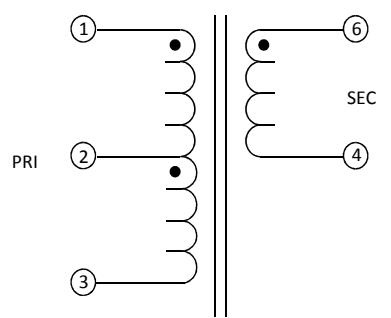
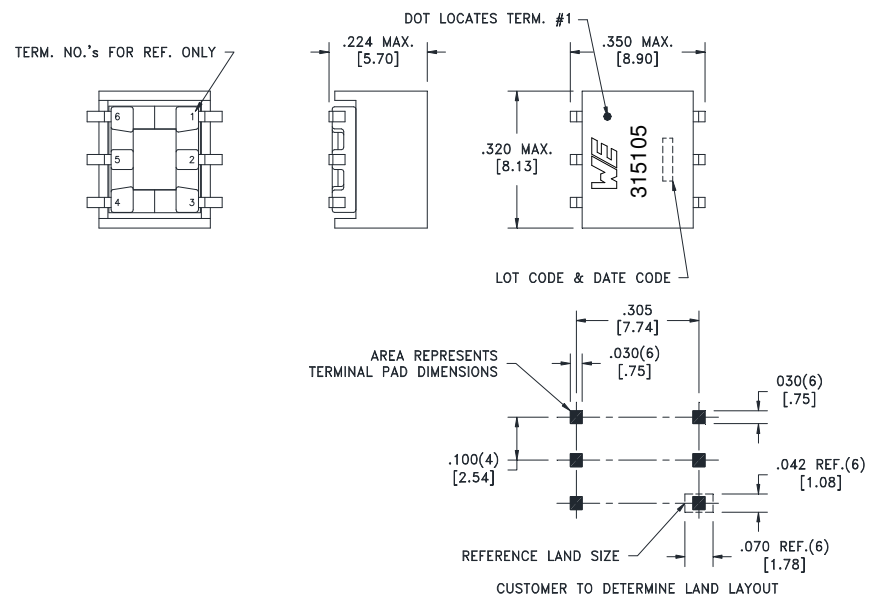
| | | |
|-------------------|------|----------------|
| CUSTOMER TERMINAL | RoHS | LEAD(Pb)--FREE |
| Sn 96%, Ag 4% | Yes | Yes |

more than you expect



ELECTRICAL SPECIFICATIONS @ 25° C unless otherwise noted:

| PARAMETER | TEST CONDITIONS | VALUE |
|-----------------|-------------------------|----------------|
| D.C. RESISTANCE | 1-3 @20°C | 1.00 ohms max. |
| D.C. RESISTANCE | 6-4 @20°C | 1.00 ohms max. |
| INDUCTANCE | 1-3 10KHz, 100mV, Ls | 400µH min. |
| DIELECTRIC | 1-6 1500VAC, 1 second | |
| TURNS RATIO | (1-2):(2-3), tie(NS/NP) | 1:1, ±1% |
| TURNS RATIO | (1-3):(6-4), tie(NS/NP) | 1:1, ±1% |



GENERAL SPECIFICATIONS:

OPERATING TEMPERATURE RANGE: -40°C to +125°C including temp rise.

Wire insulation & RoHS status not affected by wire color. Wire insulation color may vary depending on availability.

| | | | | | | |
|------|-----------|--------------------------|--|--|--|---|
| DFM | SP | Packaging Specifications | | Tolerances unless otherwise specified: Angles: ±1° Decimals: ±.005 [0.13] Fractions: ±1/64 Footprint: ±.005 [0.13] | DRAWING TITLE TRANSFORMER | PART NO. 750315105 |
| DATE | 9/19/2014 | Method: Tape & Reel | | | | |
| ENG | KLM | PKG-0738 | | | | |
| REV. | 00 | | | | | |
| DATE | 10/3/2014 | www.we-online.com/midcom | | | | |