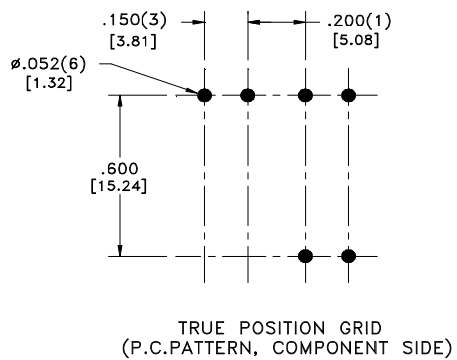
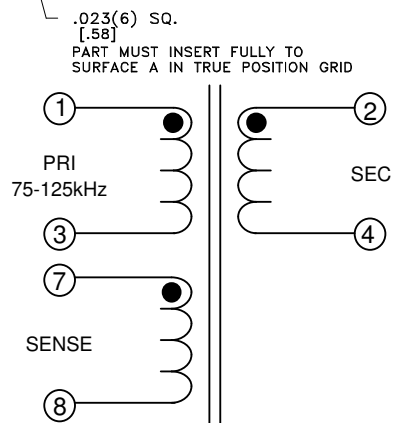
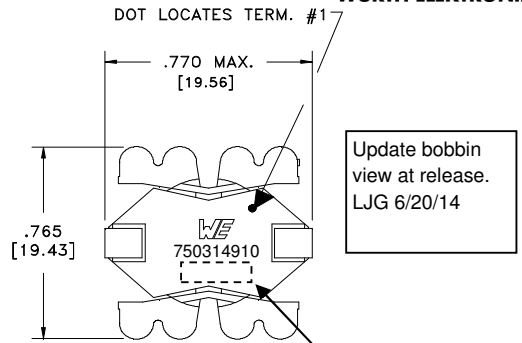
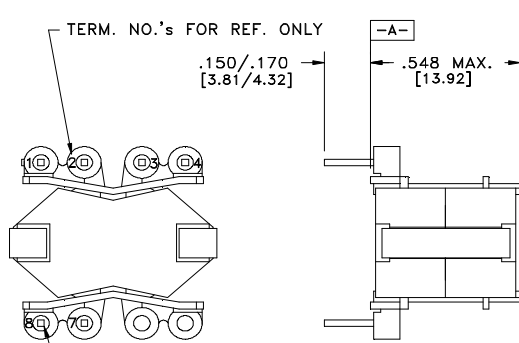


CUSTOMER TERMINAL	RoHS	LEAD(Pb)-FREE
Sn96%, Ag4%	Yes	Yes



ELECTRICAL SPECIFICATIONS @ 25°C unless otherwise noted:

D.C. RESISTANCE (@20°C):	1-3 , 0.890 Ohms ±10%. 2-4 , 0.835 Ohms ±10%. 7-8 , 0.236 Ohms ±10%.
DIELECTRIC RATING:	1250VAC for 1 second between pins 1-4. 1250VAC for 1 second between pins 1-8.
INDUCTANCE:	550 μH ±5%, 10kHz, 100mVAC, 0mADC, 1-3, Ls.
SATURATION CURRENT:	1.45A saturating current that causes 20% rolloff from initial inductance.
LEAKAGE INDUCTANCE:	10μH typ, 15μH max., 100kHz, 100mVAC, 1-3(tie 2+4), Ls. 24μH typ, 35μH max., 100kHz, 100mVAC, 1-3(tie 7+8), Ls.
URNS RATIO:	(1-3):(2-4) , (1):(1.00) , ±1%. (1-3):(7-8) , (4):(1.00) , ±1%.

Designed for functional insulation

OPERATING TEMPERATURE RANGE: -40°C to 125°C including temp. rise.

Wire insulation & RoHS status not affected by wire color. Wire insulation color may vary depending on availability.

Würth Electronics Midcom Inc. Watertown, SD USA Toll Free: 800-643-2661 Fax: 605-886-4486	Unless otherwise specified, tolerances are as follows: Angles: ±1° Fractions: ±1/64 Decimals: ±.005(.127mm) Footprint: ±.001(.03mm)	more than you expect	
	Drawing Title <h1>Transformer</h1>	Drawing Number <h1>750314910</h1>	Rev. <h1>01</h1>
This drawing is dual dimensioned. Dimensions in brackets are in millimeters	Revisions: See Sheet 1	Scale ----	Spec Sheet 1 of 1