

CUSTOMER TERMINAL	RoHS	LEAD(Pb)-FREE
Sn96%, Ag4%	Yes	Yes

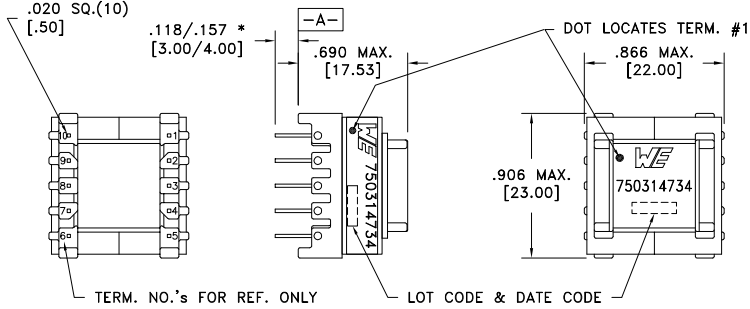
more than you expect



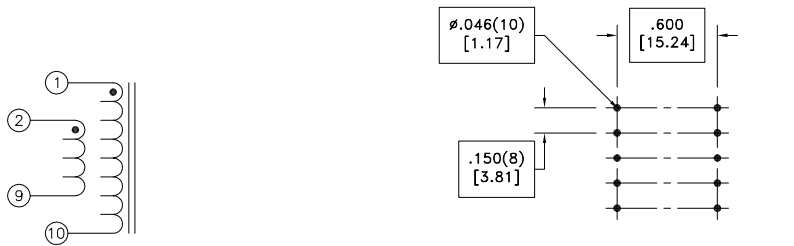
**ELECTRICAL SPECIFICATIONS @ 25°C unless otherwise noted:**

PARAMETER	TEST CONDITIONS	VALUE
D.C. RESISTANCE	1-10 tie(1+2, 9+10), @20°C	0.240 ohms ±10%
INDUCTANCE	1-10 tie(1+2, 9+10), 10kHz, 100mVAC, Ls	600uH ±5%
SATURATION CURRENT	1-10 tie(1+2, 9+10), 20% rolloff from initial	1.5A
DIELECTRIC	1-Core tie(1+2, 9+10), 500VAC, 1 second	-

PART MUST INSERT FULLY TO SURFACE A IN RECOMMENDED GRID \* DIMENSION MAY BE EXCEEDED WITH SOLDER ONLY



**ALTERNATE MARKING DETAIL**



Customer to tie terminals 1&2 and 9&10 on PCB.

RECOMMENDED P.C. PATTERN, COMPONENT SIDE

**GENERAL SPECIFICATIONS:**

OPERATING TEMPERATURE RANGE: -40°C to +125°C including temp rise.

CURRENT RATING: 1.4A causes 40°C temp. rise.

Wire insulation & RoHS status not affected by wire color.  
Wire insulation color may vary depending on availability.

REV.	DATE	Packaging Specifications Method: Tray PKG-0736 www.we-online.com/midcom		Tolerances unless otherwise specified: Angles: ±1° Fractions: ±1/64 Decimals: ±.005 [ .13 ] Footprint: ±.001 [ .03 ]	DRAWING TITLE <b>TRANSFORMER</b>	PART NO. <b>750314734</b>
6A	12/15	SEE REVISION SHEET FOR REVISION LEVEL	CONVENTION PLACEMENT	This drawing is dual dimensioned. Dimensions in brackets are in millimeters.	eiSos p/n: 750314734	SPECIFICATION SHEET 1 OF 1