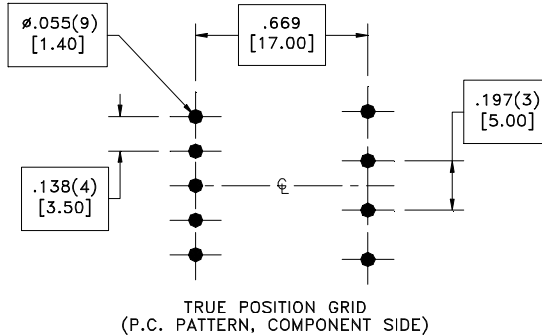
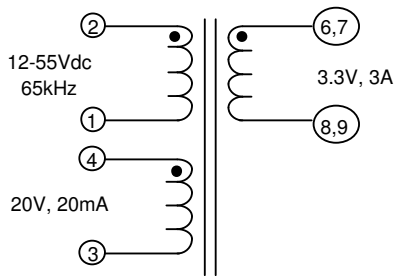
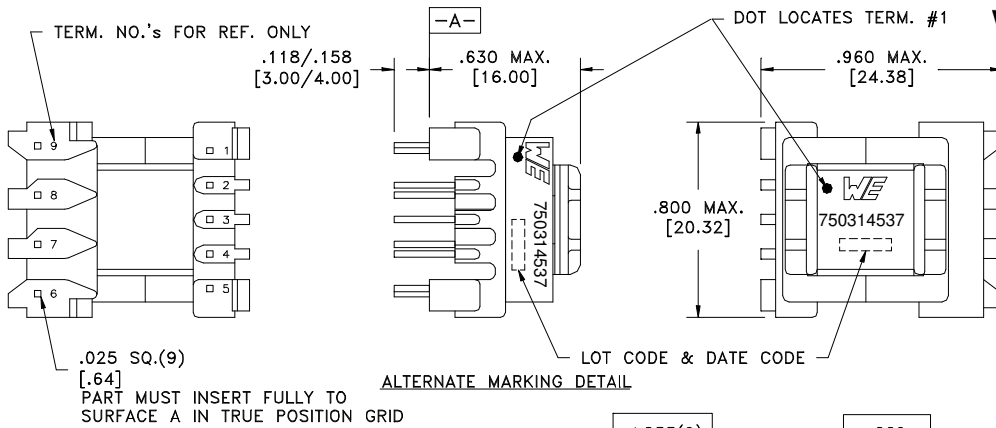


CUSTOMER TERMINAL	RoHS	LEAD(Pb)-FREE
Sn96%, Ag4%	Yes	Yes



**ELECTRICAL SPECIFICATIONS @ 25°C unless otherwise noted:**

D.C. RESISTANCE (@20°C):	2-1 , 0.060 Ohms ±20%. 4-3 , 0.650 Ohms ±10%. 6-8 (6+7,8+9), 0.025 Ohms max.
DIELECTRIC RATING:	2500VAC, 1 minute tested by applying 3125VAC for 1 second between pins 2-6(2+4,6+7). 500VAC, 1 minute tested by applying 625VAC for 1 second between pins 2-4.
INDUCTANCE:	15µH ±10%, 100kHz, 100mVAC, 0mADC, 2-1, Ls.
LEAKAGE INDUCTANCE:	2µH max., 100kHz, 100mVAC, 2-1(4+3,6+7+8+9), Ls.
SATURATION CURRENT:	6.5A saturating current that causes 20% rolloff from initial inductance.
TURNS RATIO:	( 2-1 ):( 6-8 ), (2.00):(1.00), tie(6+7,8+9), ±1%. ( 4-3 ):( 2-1 ), (3.00):(1.00), ±1%.

Reference Design

Designed to comply with the following requirements as defined by IEC61558-2-16:

- Reinforced insulation for a primary circuit at a working voltage of 265Vrms.

**OPERATING TEMPERATURE RANGE:** -40°C to 125°C including temp. rise.

Wire insulation & RoHS status not affected by wire color. Wire insulation color may vary depending on availability. PC1\_0\_5280

<b>Würth Electronics Midcom Inc.</b>  Watertown, SD USA Toll Free: 800-643-2661 Fax: 605-886-4486	Unless otherwise specified, tolerances are as follows: Angles: ±1°      Fractions: ±1/64 Decimals: ±.005(.127mm)      Footprint: ±.001(.03mm)	<b>more than you expect</b>	
	Drawing Title <h2 style="margin: 0;">Transformer</h2>	Drawing Number <h2 style="margin: 0;">750314537</h2>	Rev. <h2 style="margin: 0;">01</h2>
This drawing is dual dimensioned. Dimensions in brackets are in millimeters	Revisions: See Sheet 1	Scale ----	Spec Sheet 1 of 1

Engineer:TST

01/12/2015