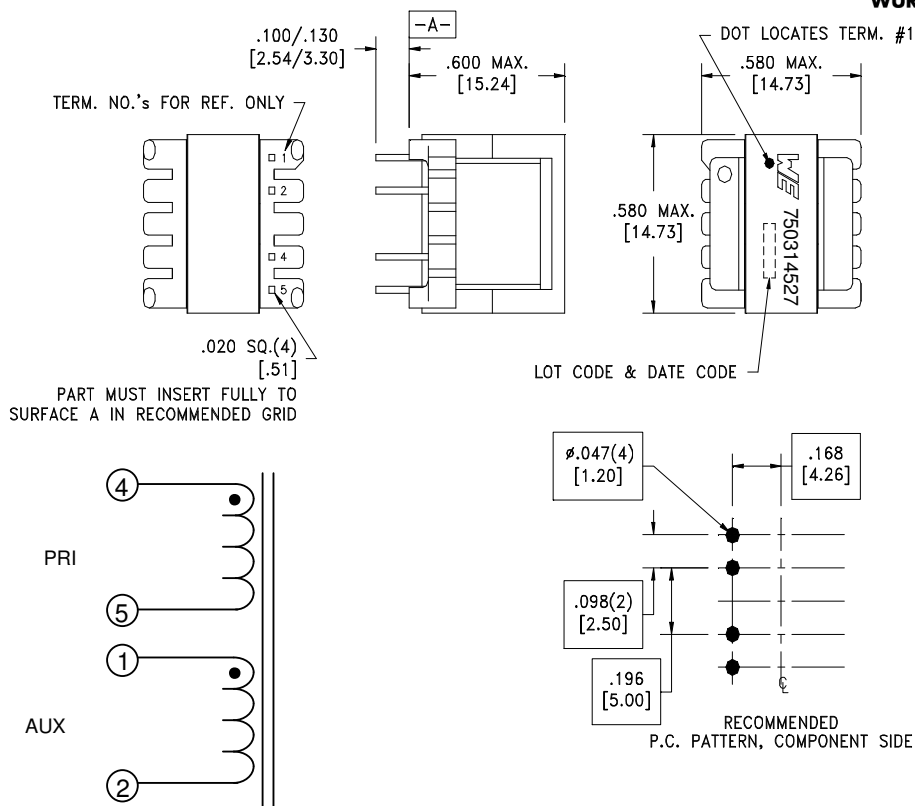


CUSTOMER TERMINAL	RoHS	LEAD(Pb)-FREE
Sn96%, Ag4%	Yes	Yes



ELECTRICAL SPECIFICATIONS @ 25°C unless otherwise noted:

D.C. RESISTANCE (@20°C):	4-5 , 0.647 Ohms $\pm 10\%$. 1-2 , 0.602 Ohms $\pm 10\%$.
DIELECTRIC RATING:	1500VAC for 1 second between pins 2-4.
INDUCTANCE:	470 μ H $\pm 10\%$, 10kHz, 100mVAC, 0mADC, 4-5, Ls.
SATURATION CURRENT:	1.2A saturating current that causes 20% rolloff from initial inductance.
URNS RATIO:	(4-5):(1-2) , (1.698):(1.00) , $\pm 1\%$.

Reference Design

OPERATING TEMPERATURE RANGE: -40°C to 125°C including temp. rise.

Wire insulation & RoHS status not affected by wire color. Wire insulation color may vary depending on availability.

PC1_0_2860

Würth Electronics Midcom Inc. Watertown, SD USA Toll Free: 800-643-2661 Fax: 605-886-4486	Unless otherwise specified, tolerances are as follows: Angles: $\pm 1^\circ$ Fractions: $\pm 1/64$ Decimals: $\pm .005$ (.127mm) Footprint: $\pm .001$ (.03mm)		more than you expect	
	Drawing Title Inductor		Drawing Number 750314527	Rev. 01
This drawing is dual dimensioned. Dimensions in brackets are in millimeters	Revisions: See Sheet 1		Scale ----	Spec Sheet 1 of 1

Engineer:KLM

07/02/2014