

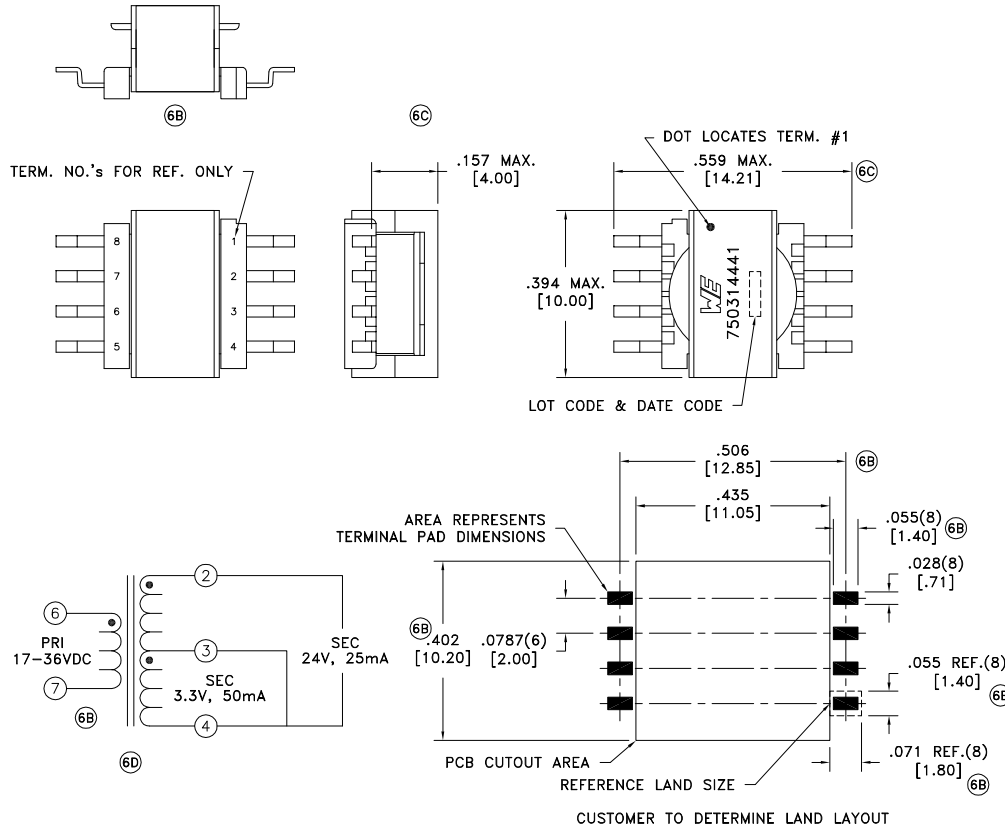
| | | |
|-------------------|------|---------------|
| CUSTOMER TERMINAL | RoHS | LEAD(Pb)-FREE |
| Sn96%, Ag4% | Yes | Yes |

more than you expect



ELECTRICAL SPECIFICATIONS @ 25°C unless otherwise noted:

| PARAMETER | TEST CONDITIONS | VALUE |
|--------------------|-------------------------------------|-----------------|
| D.C. RESISTANCE | 6-7 @20°C | 0.318 ohms ±10% |
| D.C. RESISTANCE | 2-4 @20°C | 1.08 ohms ±10% |
| D.C. RESISTANCE | 3-4 @20°C | 0.180 ohms ±10% |
| INDUCTANCE | 6-7 100kHz, 100mVAC, Ls | 80uH ±10% |
| SATURATION CURRENT | 20% rolloff from initial | 520mA |
| LEAKAGE INDUCTANCE | 6-7 tie(2+3+4), 100kHz, 100mVAC, Ls | 1.5uH ±33% |
| DIELECTRIC | 2-6 1500VAC, 1 second | - |
| URNS RATIO | (2-4):(6-7) | 2.56:1, ±1% |
| URNS RATIO | (6-7):(3-4) | 2.57:1, ±1% |



GENERAL SPECIFICATIONS:

OPERATING TEMPERATURE RANGE: -40°C to +125°C including temp rise.

Designed to comply with the following requirements:

- Basic Insulation: 50V
- IEC 61010-1 Test Voltage: 860VAC

Wire insulation & RoHS status not affected by wire color.
Wire insulation color may vary depending on availability.

| | | | | | | |
|------|-------|---------------------------------------|------------------|--|--------------------|----------------------------|
| REV. | DATE | Packaging Specifications | | Tolerances unless otherwise specified: | DRAWING TITLE | PART NO. |
| 6D | 5/17 | Method: Tape & Reel | | Angles: ±1° | TRANSFORMER | 750314441 |
| 6C | 2/16 | PKG-0991 | Fractions: ±1/64 | This drawing is dual dimensioned. Dimensions in brackets are in millimeters. | | |
| 6B | 10/14 | www.we-online.com/midcom | | | | SPECIFICATION SHEET 1 OF 1 |
| 6A | 7/14 | SEE REVISION SHEET FOR REVISION LEVEL | | | | |